

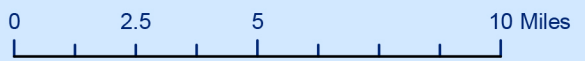
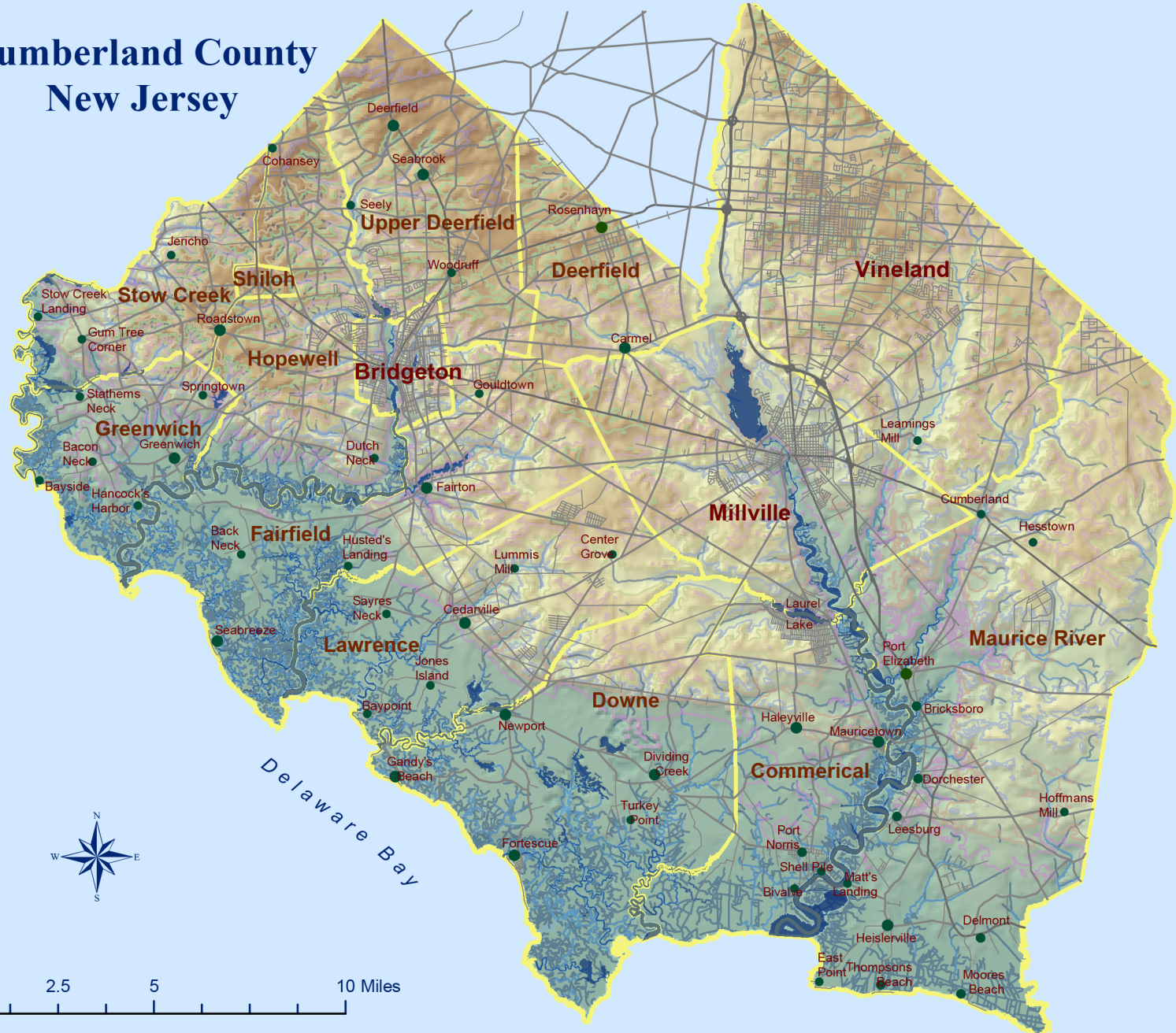
Cumberland County, NJ Data Book

2022

Note:
2020 Decennial Census
data will be updated
as received.

Data from the 2010, 2020 Census & 2015-2019 American Community Survey 5-year
Estimates. Prepared by: Cumberland County Department of Planning, 2022

Cumberland County New Jersey



Cumberland County
Department of Planning,
Tourism & Community Affairs
164 West Broad Street
Bridgeton, NJ 08302
(856) 453-2175

<http://www.co.cumberland.nj.us>
www.explore.cumberlandnj.com

Historic Population

Municipal Population: 1810 to 2020

Cumberland County, NJ

Municipality	1810	1820	1830	1840	1850	1860	1870	1880	1890	1900	1910	1920	1930	1940	1950	1960	1970	1980	1990	2000	2010	2020
Bridgeton					2,446	3,595	6,830	8,720	11,424	13,193	14,209	14,323	15,699	15,992	18,378	20,966	20,435	18,795	18,942	22,771	25,349	27,263
Cohansey					1,034	1,509																
Commercial								2,265	2,344	2,982	2,604	2,292	2,873	2,822	3,238	3,244	3,667	4,674	5,026	5,259	5,178	4,669
Deerfield	1,889	1,903	2,417	2,621	927	1,288	1,522	1,643	2,614	3,066	3,311	3,153	1,513	1,483	1,758	2,053	2,464	2,523	2,933	2,927	3,119	3,136
Downe	1,501	1,749	1,923	1,920	2,341	3,114	3,385	1,687	1,793	1,833	1,519	1,322	1,574	1,546	1,786	1,870	1,777	1,803	1,702	1,631	1,585	1,399
Fairfield	2,297	1,869	1,812	1,935	2,133	2,448	3,011	3,215	1,688	1,911	1,629	1,514	1,848	1,977	2,932	3,916	4,990	5,693	5,699	6,283	6,295	5,546
Greenwich	858	890	912	918	1,158	1,265	1,262	1,245	1,173	1,283	1,145	966	979	929	966	1,086	963	973	911	847	804	771
Hopewell	1,987	1,952	1,953	2,209	1,480	1,757	1,859	1,764	1,743	1,807	1,818	1,844	1,764	2,048	2,460	3,586	3,970	4,365	4,215	4,434	4,571	4,391
Landis							7,077	6,005	3,855	4,721	6,435	10,035	21,603	24,439	29,573							
Lawrence									1,729	1,658	1,746	1,549	1,770	1,754	2,044	2,639	2,329	2,116	2,433	2,721	3,290	3,087
Maurice River	2,085	2,411	2,724	2,142	2,245	2,430	2,502	2,374	2,279	2,132	2,124	2,016	2,319	2,261	2,834	3,105	3,743	4,577	6,648	6,928	7,976	6,218
Millville	1,032	1,010	1,559	1,771	2,332	3,932	6,107	7,660	10,002	10,583	12,451	14,691	14,705	14,806	16,041	19,096	21,366	24,815	25,992	26,847	28,400	27,491
Shiloh													401	387	427	554	573	604	408	534	516	444
Stow Creek	1,039	884	791	846	1,093	1,267	1,133	1,107	972	934	880	844	796	720	957	1,010	1,050	1,365	1,437	1,429	1,431	1,312
Upper Deerfield													2,051	2,020	5,203	6,040	6,648	6,810	6,927	7,556	7,660	7,645
Vineland Borough									3,822	4,370	5,282	6,799										
Vineland City													21,603	24,439	29,573	37,685	47,399	53,753	54,780	56,271	60,724	30,780
Cumberland County	12,670	12,668	14,093	14,374	17,189	22,605	33,555	37,687	45,438	51,193	55,153	61,348	69,895	73,184	88,597	106,850	121,374	132,866	138,053	146,438	156,898	154,152

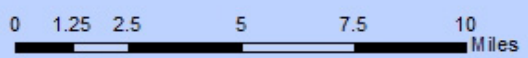
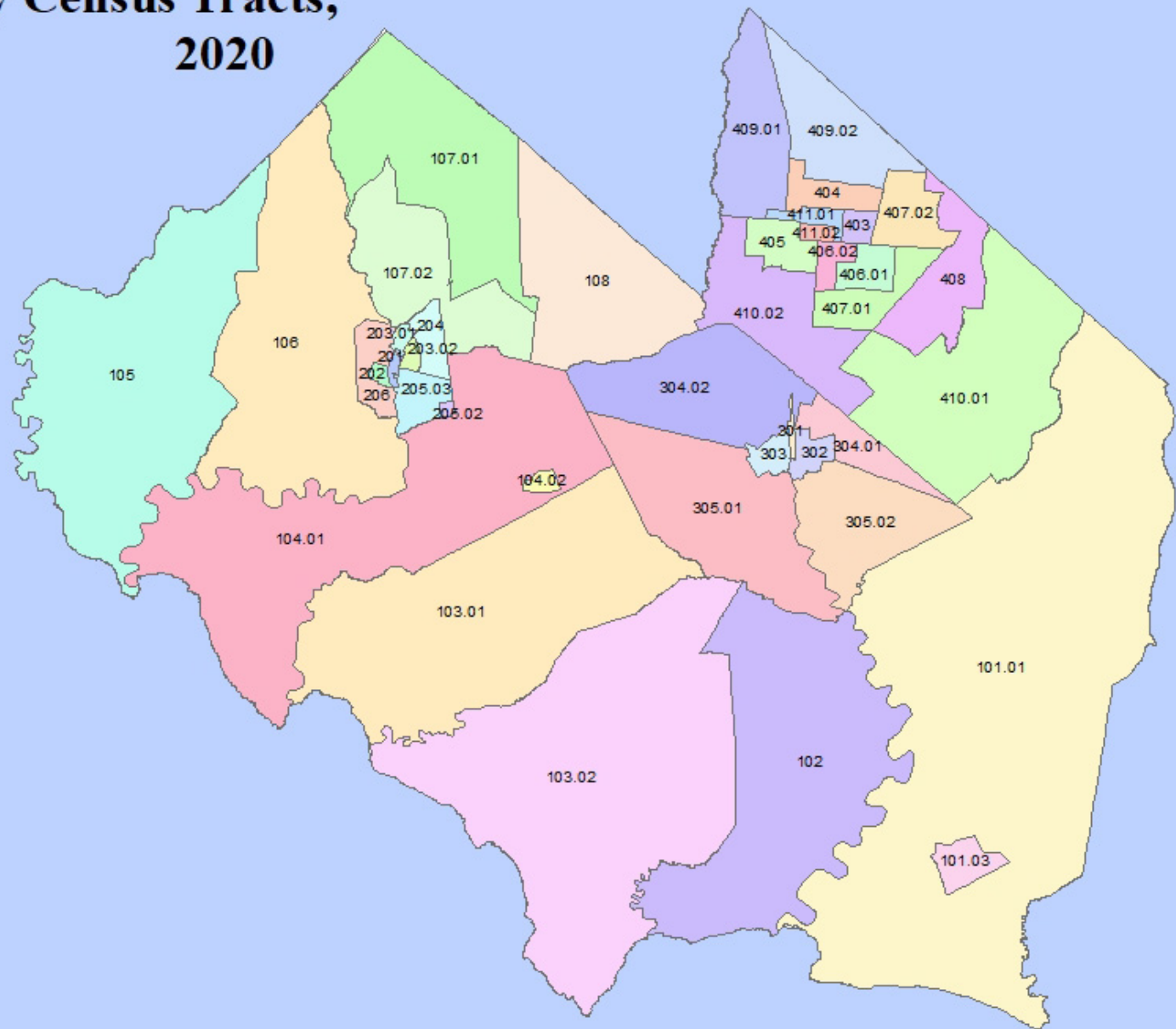
Note: Figures for municipalities not available for 1790 and 1800. New Jersey returns were destroyed when the British burned Washington during the war of 1812. Cumberland County population in 1790 was 8,248 and in 1800 was 9,529.

**Annual Estimates of the Resident Population in Cumberland County by Municipality:
April 1, 2015 to April 1, 2020**

	2010 Decennial Census	Estimates as of July 1,					2020 Decennial Census	Difference 2010 to 2020	
	April 1, 2010	2015	2016	2017	2018	2019	2020 Census	Difference 2010-2020	Percent Difference
Bridgeton	25,349	24,916	24,817	24,505	24,442	24,160	27,263	1,914	7.6%
Commercial	5,178	5,081	5,044	5,018	4,967	4,916	4,669	-509	-9.8%
Deerfield	3,119	3,110	3,084	3,057	3,039	3,012	3,136	17	0.5%
Downe	1,585	1,531	1,527	1,524	1,501	1,447	1,399	-186	-11.7%
Fairfield	6,295	6,303	6,171	6,087	5,902	5,911	5,546	-749	-11.9%
Greenwich	804	782	775	771	765	758	771	-33	-4.1%
Hopewell	4,571	4,494	4,452	4,422	4,371	4,350	4,391	-180	-3.9%
Lawrence	3,290	3,224	3,205	3,186	3,099	3,060	3,087	-203	-6.2%
Maurice River	7,976	7,237	6,707	6,325	6,030	5,949	6,218	-1,758	-22.0%
Millville	27,349	28,232	28,062	27,918	27,633	27,391	27,491	142	0.5%
Shiloh	509	505	500	497	492	487	444	-65	-12.8%
Stow Creek	1,409	1,424	1,416	1,405	1,385	1,370	1,312	-97	-6.9%
Upper Deerfield	7,660	7,555	7,501	7,431	7,380	7,277	7,645	-15	-0.2%
Vineland	58,610	60,867	60,653	60,392	59,966	59,439	60,780	2,170	3.7%
Cumberland County	156,898	155,261	153,914	152,538	150,972	149,527	154,152	-2,746	-1.8%

Cumberland County Census Tracts, 2020

Municipality	Tract Number	Population	Sq. MI.	
Maurice River	101.01	3,184	94.21	
	101.03	3,094	1.67	
Commerdal	102	4,669	34.41	
Lawrence	103.01	3,087	38.39	
Downe	103.02	1,339	54.26	
Fairfield	104.01	4,492	43.4	
	104.02	1,054	0.42	
Greenwich & Stow Creek	105	2,083	37.64	
	106	4,835	32.07	
Upper Deerfield	107.01	4,835	20.19	
	107.02	3,434	11.2	
Deerfield	108	3,136	16.88	
Bridgeton	201	1,183	0.23	
	202	2,745	0.25	
	203.01	2,587	0.31	
	203.02	4,341	0.34	
	204	3,526	1.43	
	205.02	3,913	0.14	
	205.03	4,304	1.82	
	206	4,664	1.99	
	Millville	301	921	0.2
		302	4,959	1.06
303		3,710	0.97	
304.01		4,045	3.14	
304.02		3,811	13.04	
305.01		6,038	16.66	
Vineland	403	3,428	0.73	
	404	6,557	2.04	
	405	6,000	2.09	
	406.01	3,094	1.58	
	406.02	4,142	0.93	
	407.01	4,625	3.03	
	407.02	3,793	3.16	
	408	5,527	6.23	
	409.01	2,837	7.86	
	409.02	6,678	7.46	
	410.01	4,057	23	
	410.02	3,436	9.7	
411.01	3,259	0.8		
411.02	3,347	0.38		



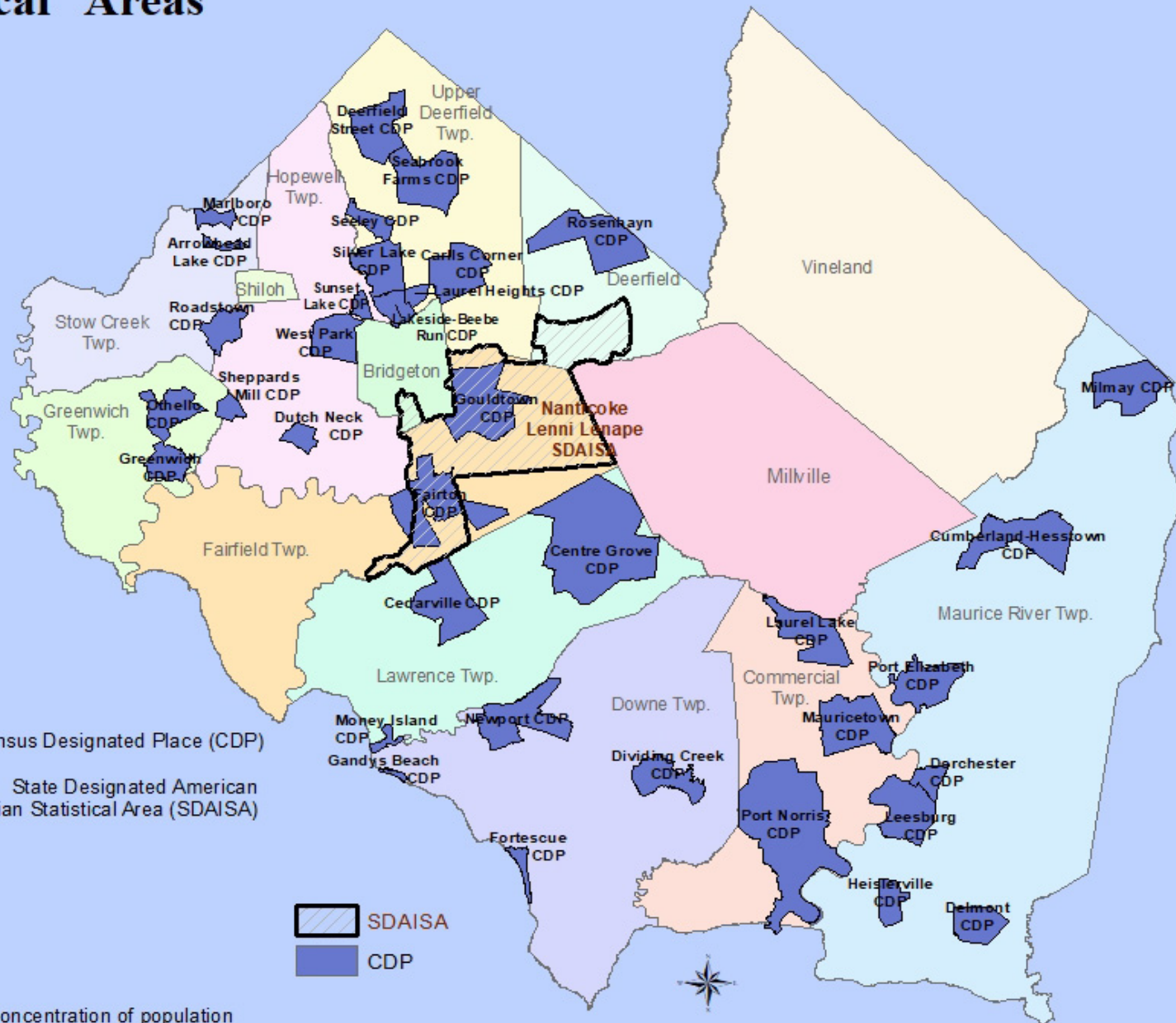
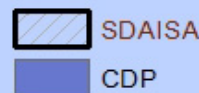
Other Statistical Areas

Census Designated Place (CDP)

CDP Name	Population 2020
Arrowhead Lake	126
Carlis Comer	911
Cedarville	702
Centre Grove	1,281
Cumberland-Hesstown	315
Deerfield Street	230
Delmont	122
Dividing Creek	345
Dorchester	291
Dutch Neck	123
Fairton	1,060
Fortescue	189
Gandys Beach	25
Gouldtown	1,601
Greenwich	251
Heislerville	227
Lakeside-Beebe Run	403
Laurel Heights	380
Laurel Lake	2,861
Leesburg	601
Marlboro	127
Mauricetown	403
Milmay	254
Money Island	22
Newport	487
Othello	132
Port Elizabeth	290
Port Norris	1,111
Roadstown	155
Rosenhayn	1,150
Seabrook Farms	1,508
Seeley	152
Sheppards Mill	131
Silver Lake	1,435
Sunset Lake	494
West Park	1,506

Census Designated Place (CDP)

State Designated American Indian Statistical Area (SDAISA)



A census designated place (CDP) is a concentration of population identified by the United States Census Bureau for the statistical purposes that is identifiable by name, but is not within an incorporated place.

Income and Poverty in Cumberland County by Municipality

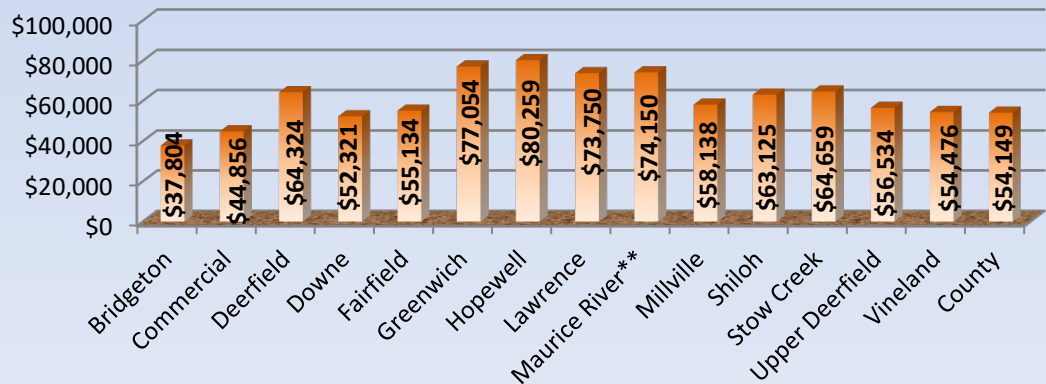
	Income											
	Median Household Income	Mean Household Income	Median Family Income	Mean Family Income	Per Capita Income	Median nonfamily Income	Mean nonfamily Income	Median earnings for workers	Median earnings for male workers*	Median earnings for female workers*	Mean Social Security Income	Mean Retirement Income
Bridgeton	\$37,804	\$55,156	\$39,373	\$60,633	\$16,160	\$20,370	\$33,129	\$18,881	\$29,586	\$33,344	\$15,390	\$15,865
Commercial	\$44,856	\$55,514	\$51,464	\$63,355	\$22,031	\$24,750	\$34,220	\$29,704	\$50,972	\$33,023	\$16,589	\$14,094
Deerfield	\$64,324	\$77,877	\$77,813	\$89,250	\$28,195	\$33,750	\$44,823	\$32,453	\$51,094	\$36,607	\$23,290	\$25,505
Downe	\$52,321	\$67,204	\$65,714	\$79,045	\$27,560	\$23,125	\$36,256	\$35,238	\$58,482	\$47,917	\$19,500	\$23,352
Fairfield	\$55,134	\$75,370	\$68,629	\$78,878	\$24,543	\$24,427	\$62,816	\$28,780	\$43,864	\$41,544	\$20,153	\$17,898
Greenwich	\$77,054	\$94,810	\$95,179	\$108,117	\$36,602	\$43,750	\$51,026	\$33,889	\$75,865	\$44,063	\$22,978	\$34,370
Hopewell	\$80,259	\$96,875	\$94,625	\$114,391	\$38,780	\$36,806	\$55,218	\$48,476	\$65,189	\$50,795	\$22,544	\$28,095
Lawrence	\$73,750	\$84,690	\$76,827	\$84,455	\$27,368	\$60,625	\$71,102	\$32,455	\$46,176	\$41,949	\$22,300	\$26,504
Maurice River**	\$74,150	\$76,999	\$92,895	\$96,202	\$30,316	\$31,098	\$39,073	\$33,125	\$59,508	\$44,000	\$21,996	\$23,595
Millville	\$58,138	\$77,101	\$69,411	\$92,462	\$30,848	\$27,829	\$42,548	\$30,884	\$53,092	\$37,432	\$20,085	\$24,692
Shiloh	\$63,125	\$79,083	\$76,250	\$91,385	\$30,168	\$53,750	\$49,265	\$29,821	\$42,500	\$28,750	\$20,916	\$27,452
Stow Creek	\$64,659	\$85,877	\$81,250	\$92,412	\$35,263	\$22,344	\$68,787	\$32,365	\$53,611	\$42,273	\$22,459	\$44,438
Upper Deerfield	\$56,534	\$77,042	\$73,897	\$90,601	\$29,996	\$29,301	\$43,238	\$32,439	\$65,469	\$37,270	\$23,035	\$21,631
Vineland	\$54,476	\$73,455	\$65,599	\$84,577	\$26,518	\$28,419	\$42,168	\$31,338	\$46,218	\$39,064	\$18,988	\$22,709
County	\$54,149	\$72,860	\$66,085	\$84,115	\$25,694	\$28,273	\$42,424	\$27,805	\$44,547	\$38,283	\$19,475	\$22,748

*Full-time, year-round workers

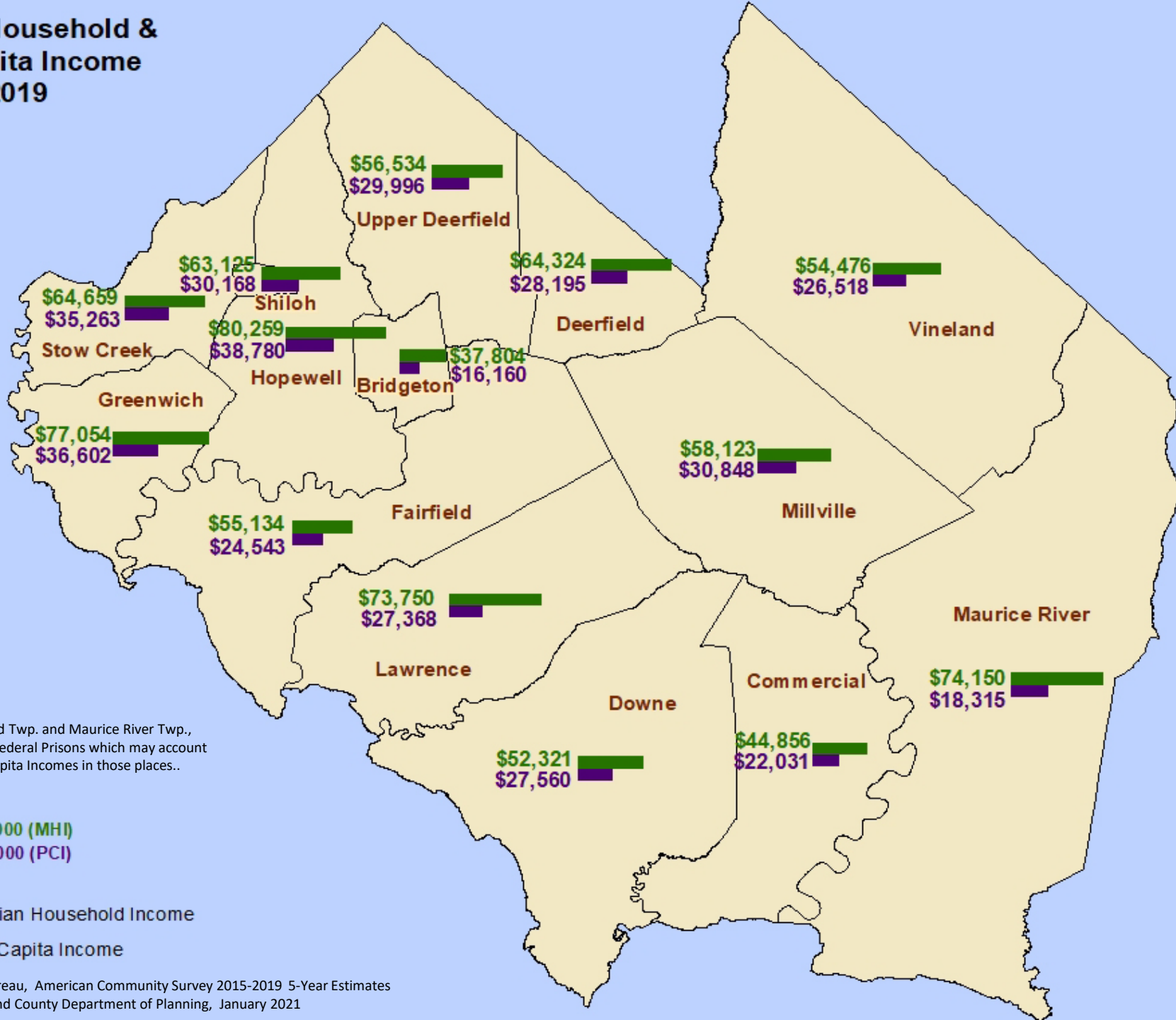
**Without prison population

Source: 2015-2019 ACS 5-yr data

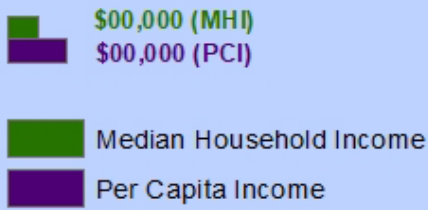
Median Household Income



Median Household & Per Capita Income 2019



Note: Bridgeton, Fairfield Twp. and Maurice River Twp., all have State or Federal Prisons which may account for the low Per Capita Incomes in those places..

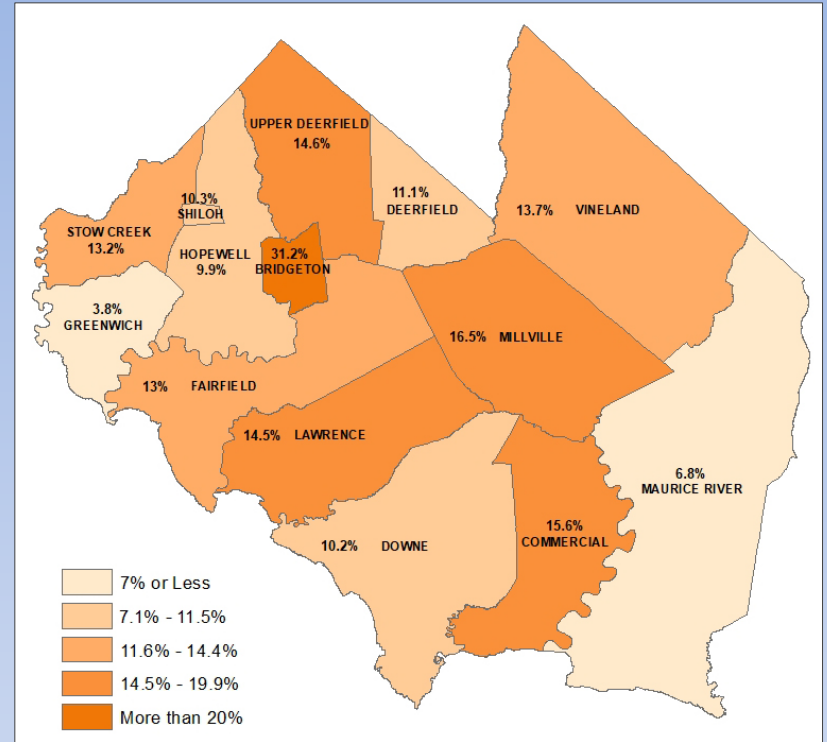


Source: U.S. Census Bureau, American Community Survey 2015-2019 5-Year Estimates
 Prepared by: Cumberland County Department of Planning, January 2021

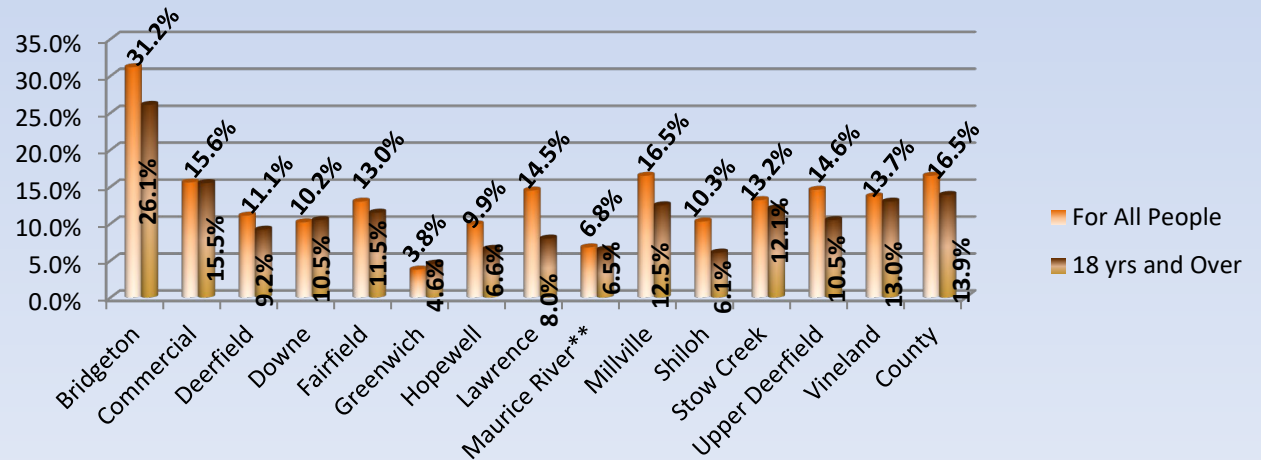
Poverty Rate

	Poverty Rate (all people)	Poverty Rate for those 18 yrs and over	Poverty rate for those 65 yrs and over
Bridgeton	31.2%	26.1%	21.3%
Commercial	15.6%	15.5%	3.8%
Deerfield	11.1%	9.2%	5.2%
Downe	10.2%	10.5%	11.2%
Fairfield	13.0%	11.5%	14.9%
Greenwich	3.8%	4.6%	6.2%
Hopewell	9.9%	6.6%	3.7%
Lawrence	14.5%	8.0%	14.8%
Maurice River	6.8%	6.5%	3.2%
Millville	16.5%	12.5%	9.8%
Shiloh	10.3%	6.1%	1.5%
Stow Creek	13.2%	12.1%	9.4%
Upper Deerfield	14.6%	10.5%	5.1%
Vineland	13.7%	13.0%	11.4%
County	16.5%	13.9%	10.5%

Poverty Rate in Cumberland County



Poverty

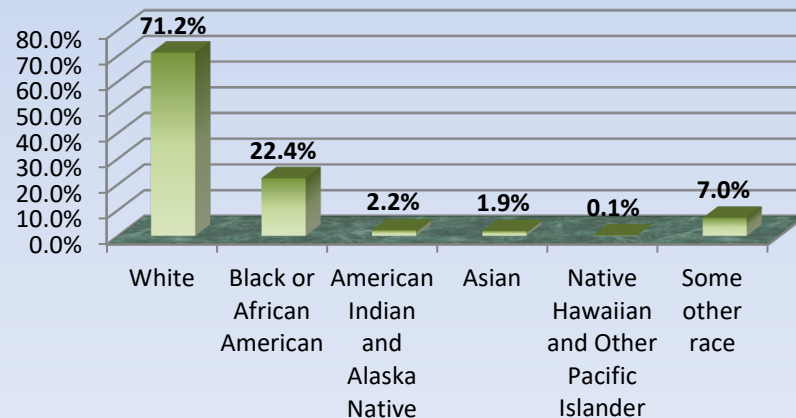


Source: 2015-2019 American Community Survey 5-yr estimates

Percent Race in Cumberland County By Municipality	Total Population	Race alone or in combination with one or more other races						
		White	Black or African American	American Indian and Alaska Native	Asian	Native Hawaiian and Other Pacific Islander	Some other race	Two or more races
Bridgeton	24,540	54.6%	34.8%	1.6%	0.7%	0.0%	10.5%	1.5%
Commercial Township	4,979	91.0%	10.5%	2.5%	2.5%	0.0%	1.1%	4.2%
Deerfield Township	3,053	76.0%	20.5%	3.0%	1.2%	0.2%	1.8%	2.1%
Downe Township	1,107	91.1%	3.0%	7.0%	0.3%	0.0%	0.0%	1.4%
Fairfield Township	6,090	40.0%	52.3%	8.1%	1.1%	0.6%	3.0%	3.5%
Greenwich Township	599	94.0%	4.7%	3.3%	8.0%	0.5%	0.0%	5.2%
Hopewell Township	4,386	85.1%	9.1%	2.6%	3.7%	0.1%	3.0%	2.5%
Lawrence Township	3,123	77.6%	16.4%	4.0%	0.0%	0.0%	4.6%	2.6%
Maurice River Township*	2,514	93.8%	4.2%	5.8%	0.0%	0.0%	2.9%	6.7%
Millville	27,721	78.9%	18.2%	0.9%	3.2%	0.1%	2.0%	2.3%
Shiloh Borough	399	87.2%	0.5%	6.3%	8.3%	0.0%	0.0%	2.3%
Stow Creek Township	1,012	92.4%	6.5%	3.0%	0.2%	0.0%	0.0%	2.1%
Upper Deerfield Township	7,379	78.4%	18.7%	1.8%	5.0%	0.0%	4.7%	6.6%
Vineland	60,034	75.2%	17.9%	1.9%	1.6%	0.1%	9.4%	2.8%
Cumberland County	151,906	71.2%	22.4%	2.2%	1.9%	0.1%	7.0%	2.8%

* without prison population

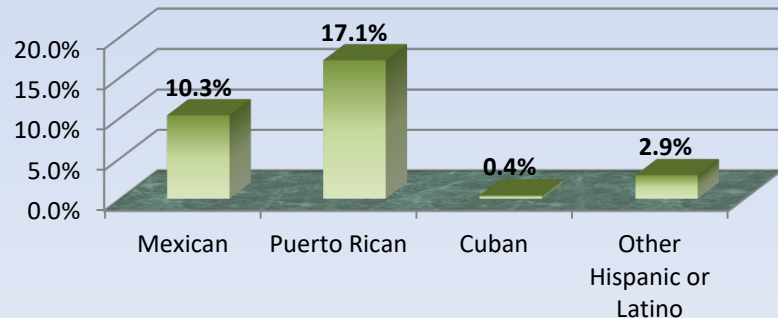
Race in Cumberland County



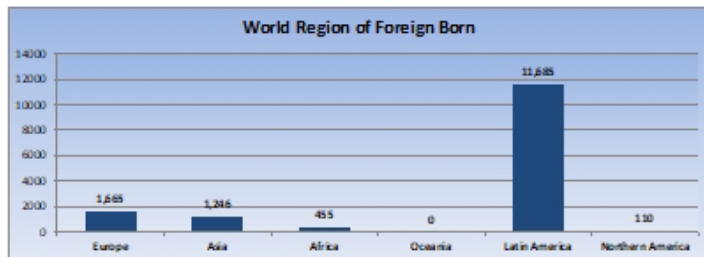
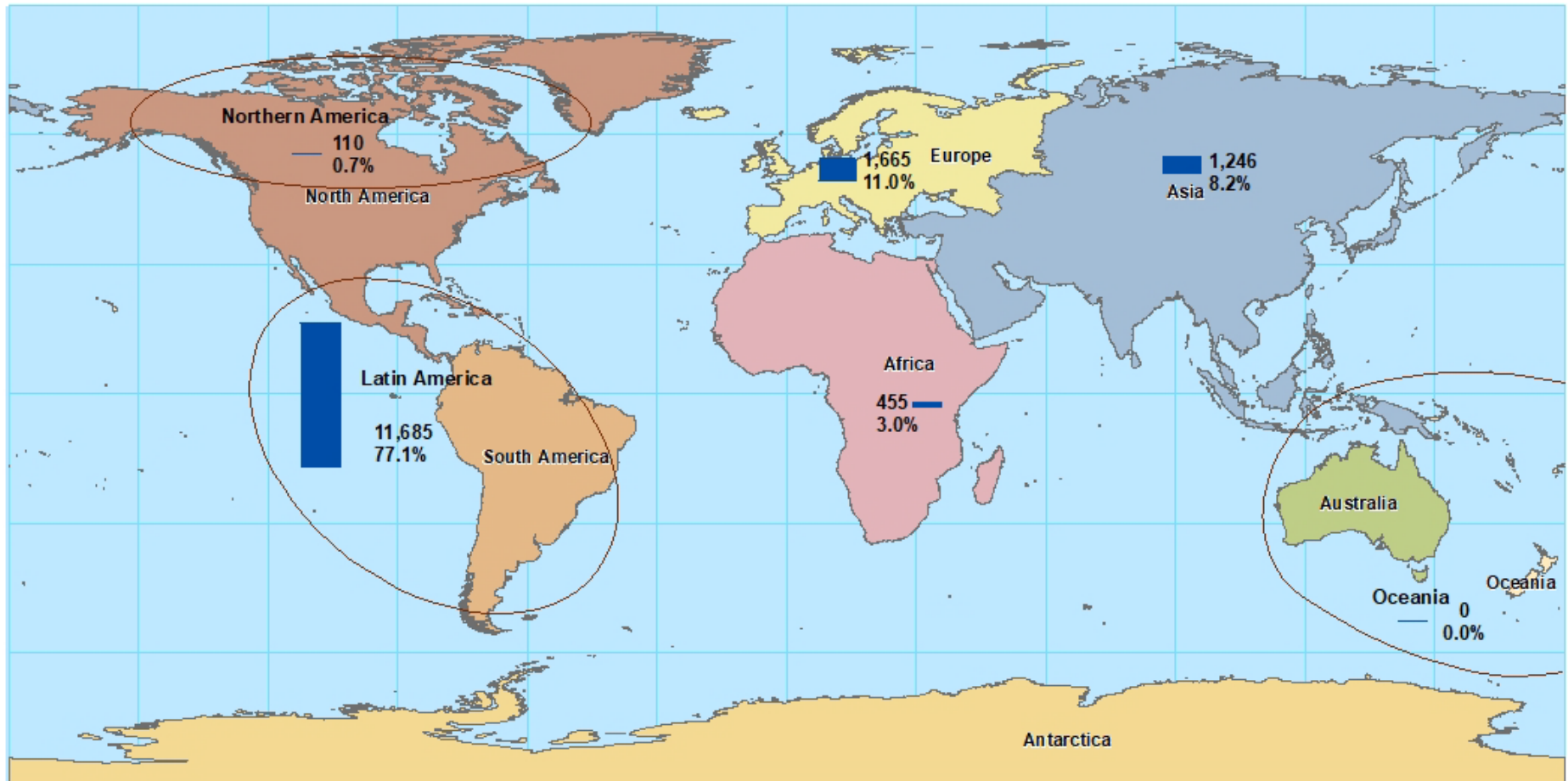
	Total Population	Hispanic or Latino				
		Hispanic or Latino (of any race)	Mexican	Puerto Rican	Cuban	Other Hispanic or Latino
Bridgeton	24,540	49.4%	31.0%	11.9%	0.2%	6.4%
Commercial Township	4,979	8.1%	0.2%	6.8%	0.5%	0.6%
Deerfield Township	3,053	10.3%	3.0%	5.7%	0.0%	1.5%
Downe Township	1,107	2.6%	0.0%	2.3%	0.4%	0.0%
Fairfield Township	6,090	13.9%	5.6%	6.5%	0.3%	1.6%
Greenwich Township	599	0.0%	0.0%	0.0%	0.0%	0.0%
Hopewell Township	4,386	7.8%	2.1%	4.3%	0.0%	1.4%
Lawrence Township	3,123	17.9%	9.3%	8.4%	0.0%	0.1%
Maurice River Township	2,514	3.3%	0.2%	1.1%	0.0%	1.9%
Millville	27,721	18.3%	1.3%	15.2%	0.5%	1.2%
Shiloh Borough	399	6.5%	5.8%	0.0%	0.8%	0.0%
Stow Creek Township	1,012	4.2%	2.5%	1.8%	0.0%	0.0%
Upper Deerfield Township	7,379	16.7%	5.2%	9.5%	0.0%	2.0%
Vineland	60,034	40.9%	10.6%	26.8%	0.5%	3.0%
Cumberland County	151,906	30.7%	10.3%	17.1%	0.4%	2.9%

Percent Hispanic Or Latino in Cumberland County by Municipality

Hispanic or Latino in Cumberland County

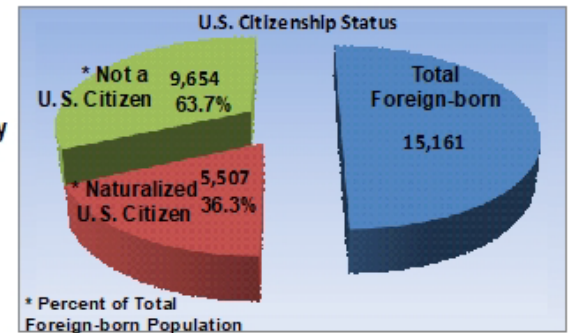


World Region of Foreign Born in Cumberland County



Total Foreign Born in Cumberland County
15,161

Source: 2015 – 2019 American Community Survey 5-yr estimates



World Region of Birth of Foreign Born

	Foreign-born population	Europe	%	Asia	%	Africa	%	Oceania	%	Latin America	%	Northern America	%
Bridgeton	5,252	47	0.9%	91	1.7%	21	0.4%	0	0.0%	5,093	97.0%	0	0.0%
Commercial	93	16	17.2%	67	72.0%	0	0.0%	0	0.0%	0	0.0%	10	10.8%
Deerfield	110	22	20.0%	24	21.8%	0	0.0%	0	0.0%	63	57.3%	1	0.9%
Downe	15	12	80.0%	3	20.0%	0	0.0%	0	0.0%	0	0.0%	0	0.0%
Fairfield	398	21	5.3%	34	8.5%	15	3.8%	0	0.0%	328	82.4%	0	0.0%
Greenwich	18	0	0.0%	18	100.0%	0	0.0%	0	0.0%	0	0.0%	0	0.0%
Hopewell	133	53	39.8%	14	10.5%	0	0.0%	0	0.0%	47	35.3%	19	14.3%
Lawrence	220	22	10.0%	0	0.0%	0	0.0%	0	0.0%	198	90.0%	0	0.0%
Maurice River	421	41	9.7%	33	7.8%	10	2.4%	0	0.0%	337	80.0%	0	0.0%
Millville	1,178	182	15.4%	379	32.2%	165	14.0%	0	0.0%	424	36.0%	28	2.4%
Shiloh	29	0	0.0%	3	10.3%	0	0.0%	0	0.0%	26	89.7%	0	0.0%
Stow Creek	25	8	32.0%	2	8.0%	0	0.0%	0	0.0%	15	60.0%	0	0.0%
Upper Deerfield	512	129	25.2%	27	5.3%	14	2.7%	0	0.0%	342	66.8%	0	0.0%
Vineland	6,757	1,112	16.5%	551	8.2%	230	3.4%	0	0.0%	4,812	71.2%	52	0.8%
Cumberland County	15,161	1,665	11.0%	1,246	8.2%	455	3.0%	0	0.0%	11,685	77.1%	110	0.7%

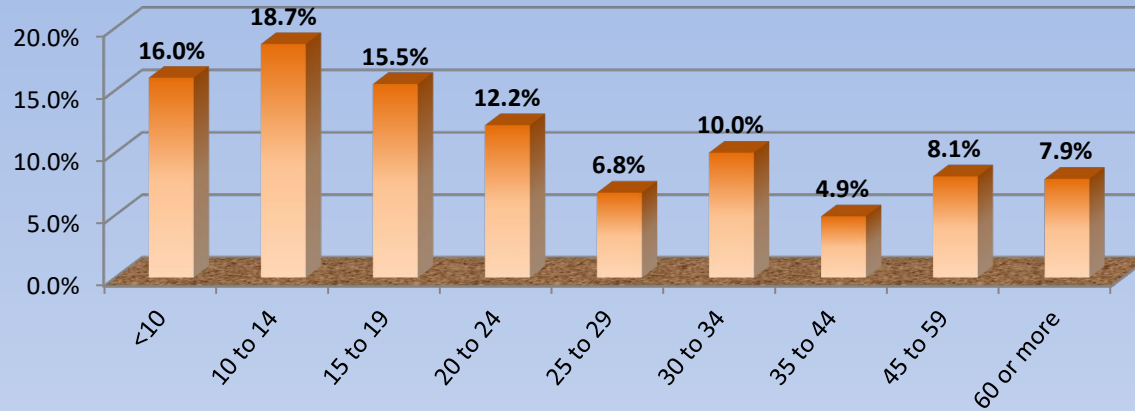
% of Foreign Born Population

Travel Time to Work in Cumberland County

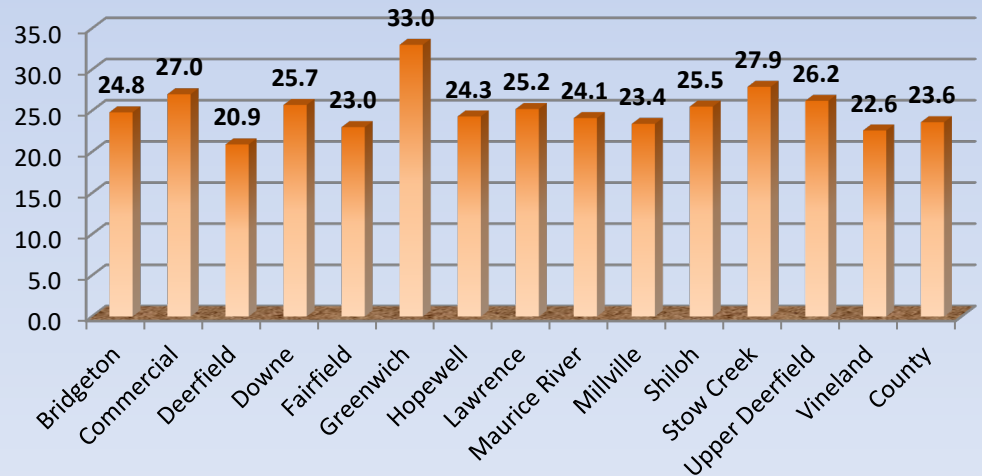
Cumberland County Residents 16 Years and Over Who Did not work at Home

Municipality	Total 16 years and over	Did Not work at home										Worked at home	Mean travel time to work (minutes)
			< 10	10 to 14	15 to 19	20 to 24	25 to 29	30 to 34	35 to 44	45 to 59	60 or more		2017
Bridgeton	8,310	8,191	16.6%	10.1%	10.5%	20.6%	6.2%	12.6%	6.9%	8.7%	7.8%	1.4%	24.8
Commercial	1,975	1,921	10.3%	6.9%	21.0%	9.0%	16.7%	11.9%	5.8%	9.9%	8.6%	2.7%	27.0
Deerfield	1,280	1,227	16.6%	16.9%	27.5%	15.6%	3.1%	5.7%	2.8%	4.9%	6.9%	4.1%	20.9
Downe	408	399	12.8%	7.3%	6.5%	24.1%	6.8%	22.8%	6.5%	8.5%	4.8%	2.2%	25.7
Fairfield	2,109	2,034	15.5%	16.3%	15.3%	200.1%	4.5%	9.4%	4.9%	5.7%	8.3%	3.6%	23.0
Greenwich	270	264	8.0%	11.7%	9.8%	13.3%	6.8%	12.9%	14.8%	5.7%	17.0%	2.2%	33.0
Hopewell	2,153	2,027	17.8%	20.6%	10.6%	9.9%	5.9%	12.1%	7.4%	7.2%	8.5%	5.9%	24.3
Lawrence	1,446	1,408	15.1%	5.7%	21.9%	14.8%	5.6%	12.6%	8.7%	9.2%	6.3%	2.6%	25.2
Maurice River	967	967	11.6%	14.8%	18.4%	11.4%	14.7%	14.5%	3.3%	5.4%	6.0%	0.0%	24.1
Millville	11,942	11,716	15.5%	19.3%	14.8%	12.8%	9.1%	9.0%	3.9%	6.9%	8.7%	1.9%	23.4
Shiloh	193	193	11.9%	18.7%	7.8%	10.9%	9.8%	11.4%	15.5%	9.8%	4.1%	0.0%	25.5
Stow Creek	471	434	11.5%	16.1%	11.5%	10.4%	5.5%	12.7%	11.3%	9.4%	11.5%	7.9%	27.9
Upper Deerfield	3,041	2,800	16.3%	14.0%	9.8%	14.5%	11.2%	7.1%	4.2%	17.0%	5.9%	7.9%	26.2
Vineland	25,797	25,310	16.6%	23.9%	17.2%	8.2%	4.8%	9.3%	4.2%	7.8%	7.9%	1.9%	22.6
County	60,362	58,891	16.0%	18.7%	15.5%	12.2%	6.8%	10.0%	4.9%	8.1%	7.9%	2.4%	23.6

Percent of Commuters by Travel Time in Minutes in Cumberland County



Mean Travel Time to Work (minutes)

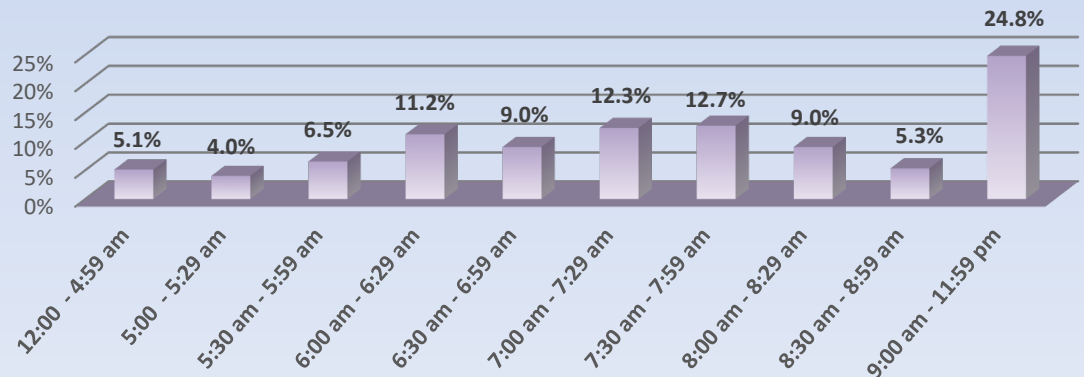


Time Leaving Home to go to Work

Cumberland County Residents 16 Years and Over

Municipality	Total 16 years and over	Did Not work at home	12:00 am - 4:59 am	5:00 am - 5:29 am	5:30 am - 5:59 am	6:00 am - 6:29 am	6:30 am - 6:59 am	7:00 am - 7:29 am	7:30 am - 7:59 am	8:00 am - 8:29 am	8:30 am - 8:59 am	9:00 am - 11:59 pm	Worked from home	Mean travel time to work (minutes)
														2019
Bridgeton	8,310	8,191	7.3%	4.0%	5.0%	18.8%	8.9%	12.9%	7.4%	8.8%	2.3%	24.6%	1.4%	24.8
Commercial Township	1,975	1,921	8.2%	9.8%	2.1%	4.8%	5.8%	16.1%	15.1%	9.2%	5.1%	23.9%	2.7%	27
Deerfield Township	1,280	1,227	4.3%	3.1%	3.4%	8.8%	21.1%	17.3%	8.9%	9.8%	3.7%	19.6%	4.1%	20.9
Downe Township	408	399	1.5%	7.3%	6.8%	21.3%	13.8%	9.8%	12.5%	6.5%	5.8%	14.8%	2.2%	25.7
Fairfield Township	2,109	2,034	5.7%	4.3%	9.3%	100.3%	9.9%	11.6%	12.8%	7.4%	4.3%	24.4%	3.6%	23
Greenwich Township	270	264	3.0%	6.8%	9.5%	11.4%	9.1%	9.5%	17.8%	9.5%	4.2%	19.3%	2.2%	33
Hopewell Township	2,153	2,027	7.5%	2.4%	3.8%	12.4%	11.6%	11.9%	20.0%	7.9%	10.9%	11.5%	5.9%	24.3
Lawrence Township	1,446	1,408	3.8%	3.9%	5.5%	7.1%	10.3%	14.3%	12.8%	15.9%	1.6%	24.9%	2.6%	25.2
Maurice River Township	967	967	4.6%	2.9%	6.0%	13.3%	12.3%	16.4%	13.4%	6.3%	3.6%	21.1%	0.0%	24.1
Millville	11,942	11,716	3.5%	2.8%	8.1%	8.9%	10.4%	10.2%	14.0%	7.9%	5.9%	28.2%	1.9%	23.4
Shiloh Borough	193	193	4.7%	6.7%	1.0%	13.5%	7.3%	22.3%	13.0%	13.0%	2.6%	16.1%	0.0%	25.5
Stow Creek Township	471	434	7.1%	6.0%	6.0%	12.9%	15.0%	9.2%	13.6%	15.4%	3.7%	11.1%	7.9%	27.9
Upper Deerfield Township	3,041	2,800	6.5%	5.6%	4.5%	9.5%	8.8%	12.5%	16.4%	13.5%	1.5%	21.3%	7.9%	26.2
Vineland	25,797	25,310	4.7%	4.1%	6.9%	10.5%	7.3%	12.3%	12.7%	9.3%	6.4%	25.7%	1.9%	22.6
Cumberland County	60,362	58,891	5.1%	4.0%	6.5%	11.2%	9.0%	12.3%	12.7%	9.2%	5.3%	24.8%	2.4%	23.6

Percentage of Cumberland County Commuters by Leave Time



Source: U.S. Census Bureau,
American Community Survey 2015-2019 5-Year Estimates
Prepared by: Cumberland County Department of Planning, January 2021

COMMUTING -- 2010 CUMBERLAND COUNTY, NJ

Total Working in County -- 61,304

Cumberland County Residents Working in Cumberland County -- 45,430

Commuting into the County -- 15,874

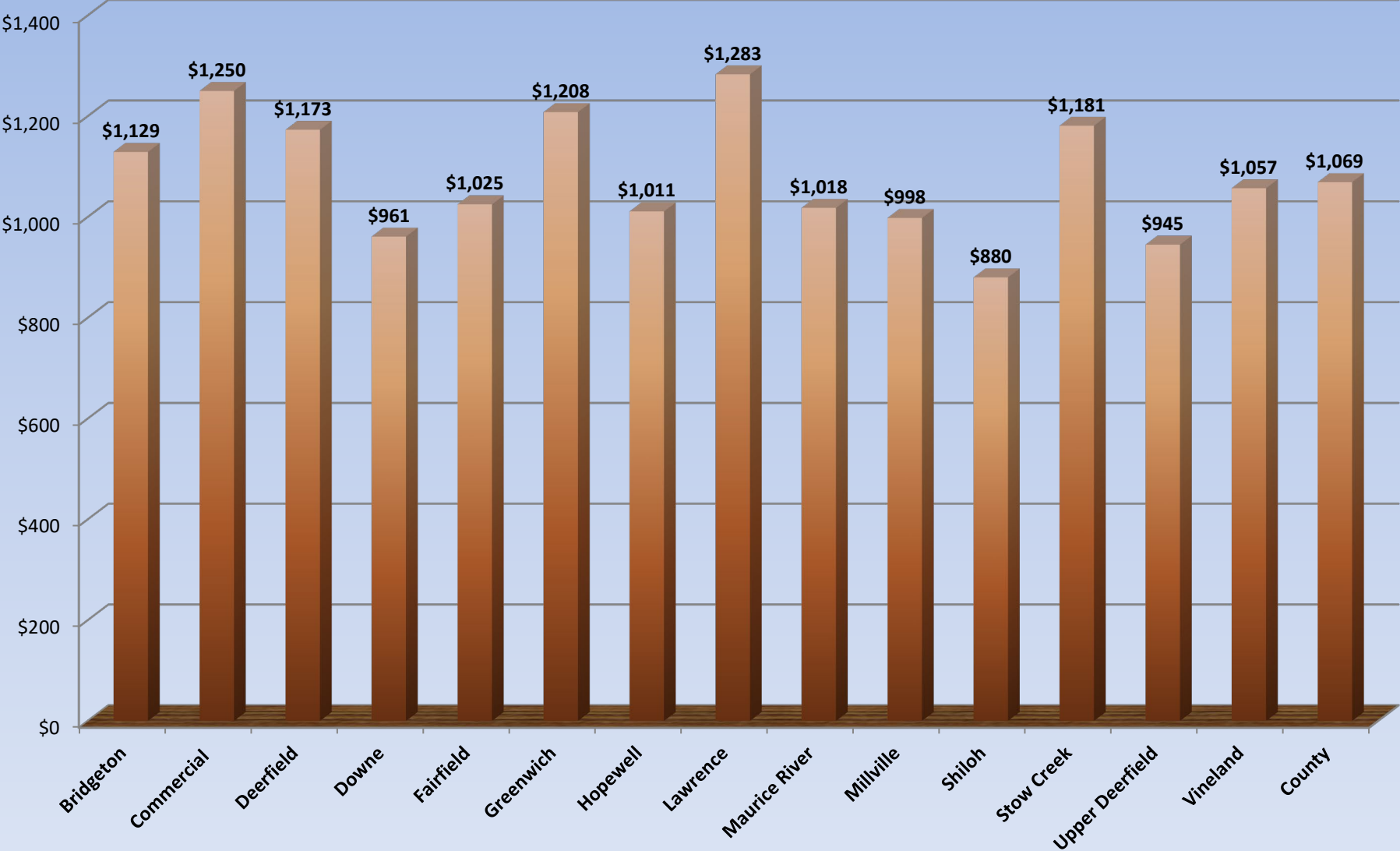
Commuting out of the County -- 16,014



Source: US Census Bureau 2010
American Community Survey 2006-2010 5 yr estimates

Average travel time to work for Cumberland residents - 23.7 minutes

Median Gross Rent in Cumberland County



Source: U.S. Census Bureau, American Community Survey 2015-2019 5-year Estimates. Prepared by: Cumberland County Department of Planning, January 2021

Educational Attainment

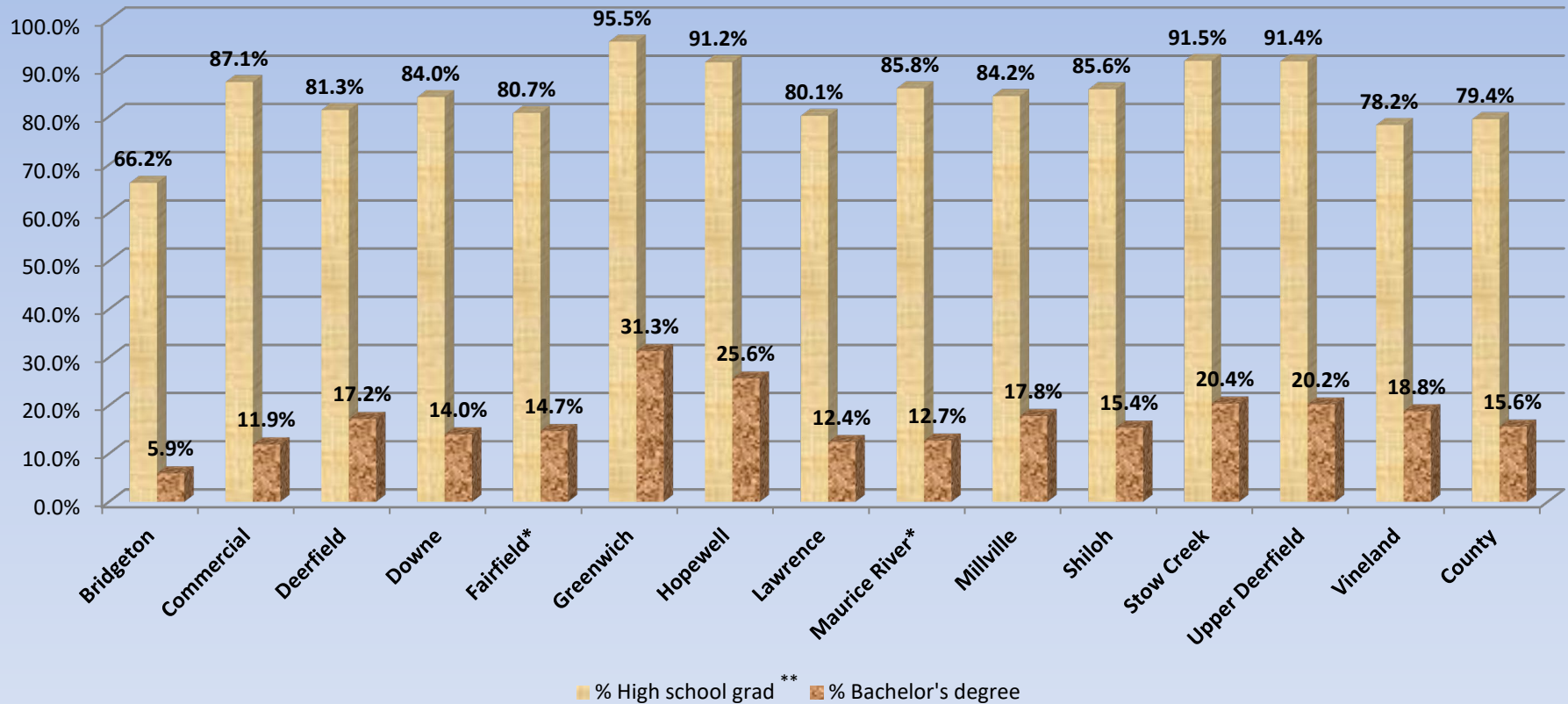
Cumberland County Residents 25 years and Over

	Population 25 years and over	Less than 9th grade	9th to 12th grade, no Diploma	High school graduate**	Some college, no degree	Associate's degree	Bachelor's degree	Graduate or Professional degree	Percent high school graduate or higher	Percent bachelor's graduate or higher
Bridgeton	14,906	15.8%	18.0%	40.0%	14.9%	5.4%	4.3%	1.7%	66.2%	5.9%
Commercial	3,465	6.8%	6.1%	47.1%	22.5%	5.6%	10.4%	1.5%	87.1%	11.9%
Deerfield	2,180	7.3%	11.4%	42.7%	11.9%	9.5%	11.9%	5.3%	81.3%	17.2%
Downe	815	4.3%	11.7%	47.9%	15.6%	6.6%	9.2%	4.8%	84.0%	14.0%
Fairfield*	3,421	7.2%	12.1%	45.4%	15.8%	4.8%	9.3%	5.4%	80.7%	14.7%
Greenwich	425	3.3%	1.2%	29.6%	24.5%	10.1%	20.0%	11.3%	95.5%	31.3%
Hopewell	3,221	2.7%	6.1%	40.5%	16.7%	8.4%	18.0%	7.6%	91.2%	25.6%
Lawrence	2,003	11.5%	8.3%	42.1%	17.8%	7.8%	10.9%	1.5%	80.1%	12.4%
Maurice River*	1,846	4.2%	10.0%	51.1%	13.1%	9.0%	9.5%	3.2%	85.8%	12.7%
Millville	19,091	4.3%	11.5%	40.0%	18.7%	7.8%	11.9%	5.9%	84.2%	17.8%
Shiloh	285	2.1%	12.3%	45.3%	12.6%	12.3%	8.4%	7.0%	85.6%	15.4%
Stow Creek	754	1.9%	6.6%	42.6%	14.7%	14.2%	11.7%	8.8%	91.5%	20.4%
Upper Deerfield	5,046	3.9%	4.7%	43.7%	20.4%	7.3%	12.6%	7.6%	91.4%	20.2%
Vineland	39,786	10.0%	11.8%	34.8%	17.4%	7.2%	13.1%	5.7%	78.2%	18.8%
County	103,121	8.4%	12.2%	39.4%	17.5%	6.9%	10.8%	4.8%	79.4%	15.6%

* Prison Population not included

** Includes equivalency

Educational Attainment High School Grad and Bachelor's Degree



* Prison Population not included

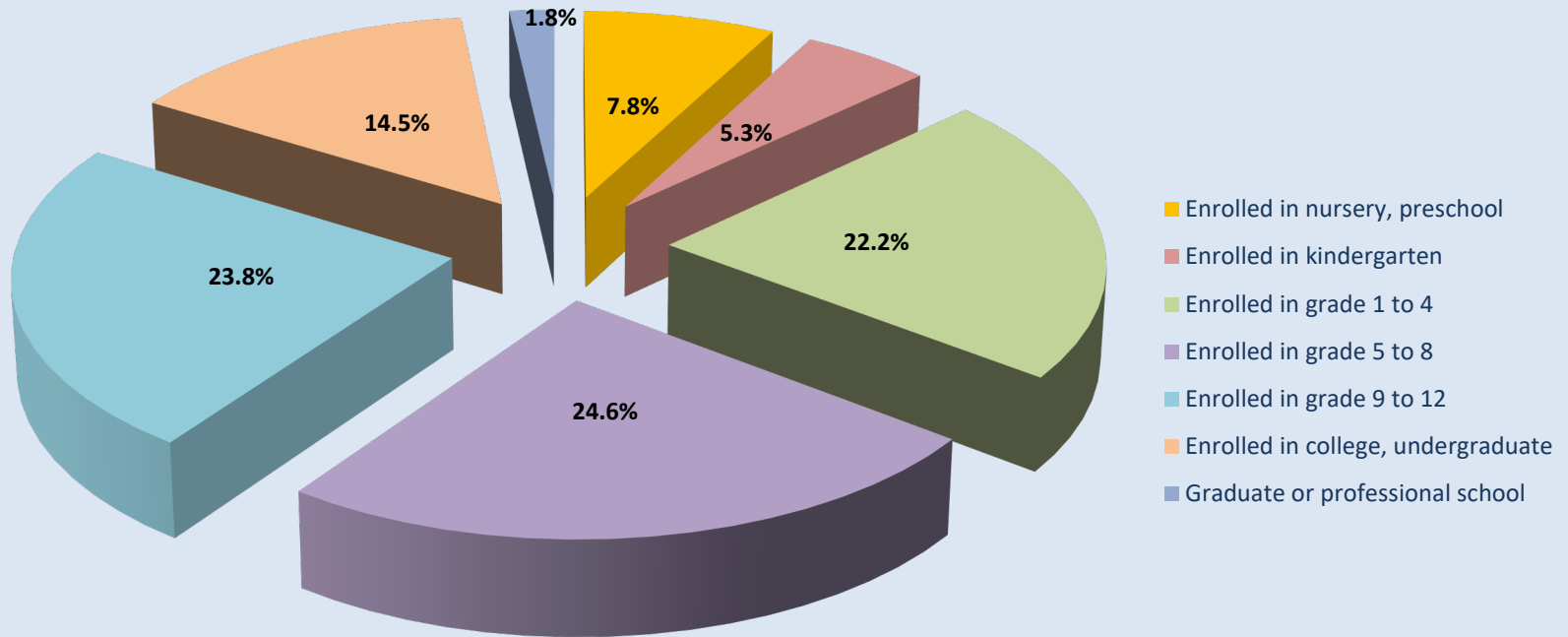
** Includes equivalency

School Enrollment by Level of School for the Population 3 Years and Over

	Population 3 years and over	Enrolled in school	Enrolled in nursery, preschool	Enrolled in kindergarten	Enrolled in grade 1 to 4	Enrolled in grade 5 to 8	Enrolled in grade 9 to 12	Enrolled in college, undergraduate	Graduate or professional school	Not enrolled in school
Bridgeton	23,427	6,832	450	374	1,770	1,905	1,570	734	29	16,595
Commercial	4,709	1,153	93	21	240	277	285	201	36	3,556
Deerfield	2,958	625	47	11	90	205	156	107	9	2,333
Downe	1,060	234	15	3	32	65	89	17	13	826
Fairfield*	4,824	1,178	176	52	217	277	248	180	28	3,646
Greenwich	590	120	14	8	22	32	32	11	1	470
Hopewell	4,333	1,054	31	3	301	219	260	184	56	3,279
Lawrence	2,967	798	58	35	257	170	155	101	22	2,169
Maurice River*	2,490	586	25	23	90	192	158	98	0	1,904
Millville	27,105	6,754	442	447	1,470	1,895	1,800	665	35	20,351
Shiloh	388	99	15	5	14	16	22	19	8	289
Stow Creek	967	173	8	12	37	65	23	25	3	794
Upper Deerfield	7,117	2,020	174	44	400	396	582	409	15	5,097
Vineland	57,119	13,656	1,250	848	3,008	3,085	2,904	2,167	394	43,463
Cumberland County	146,067	35,808	2,798	1,886	7,948	8,818	8,527	5,182	649	110,259

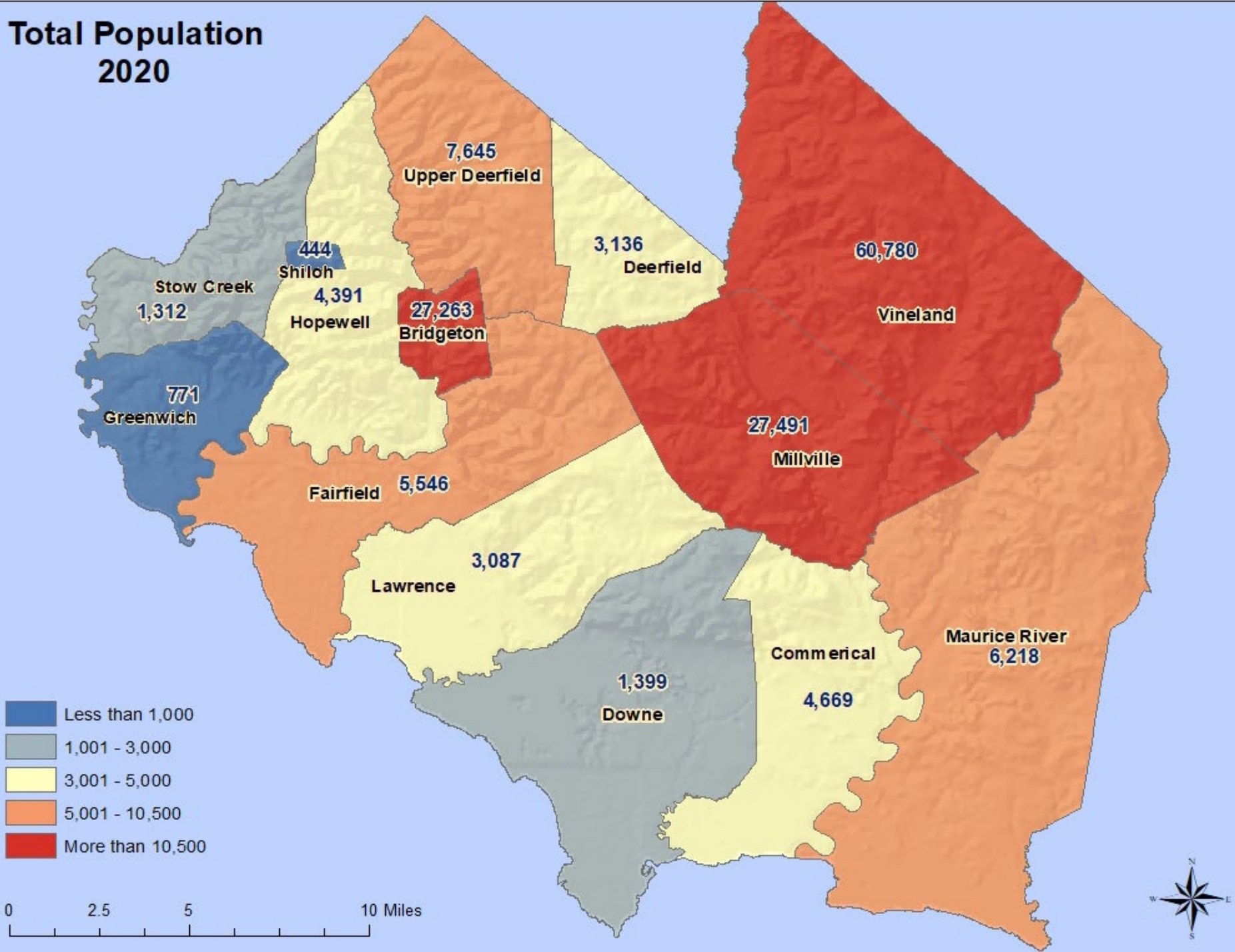
* Does not include Prison population

School Enrollment by Level

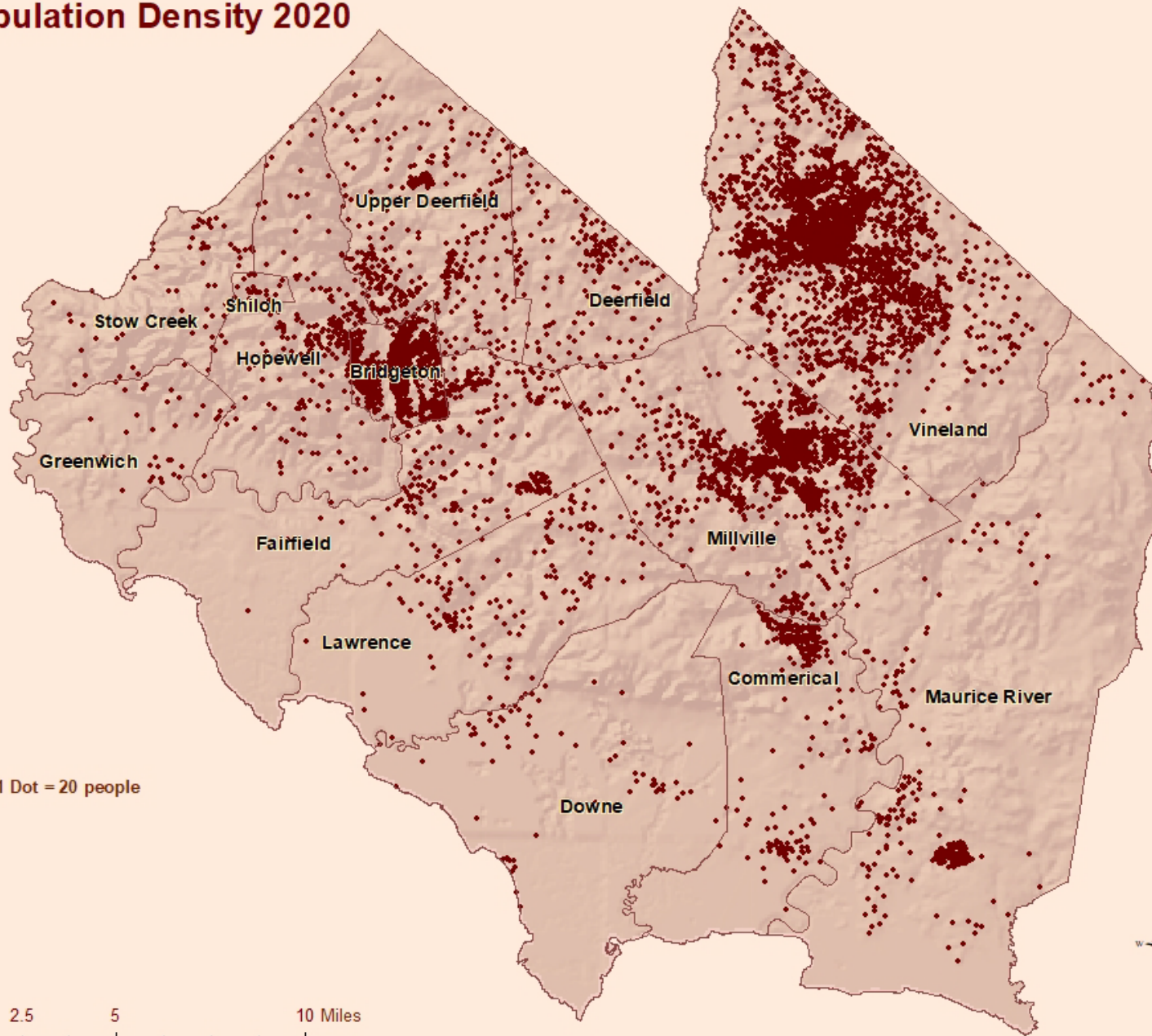


Cumberland County

Total Population 2020



Population Density 2020

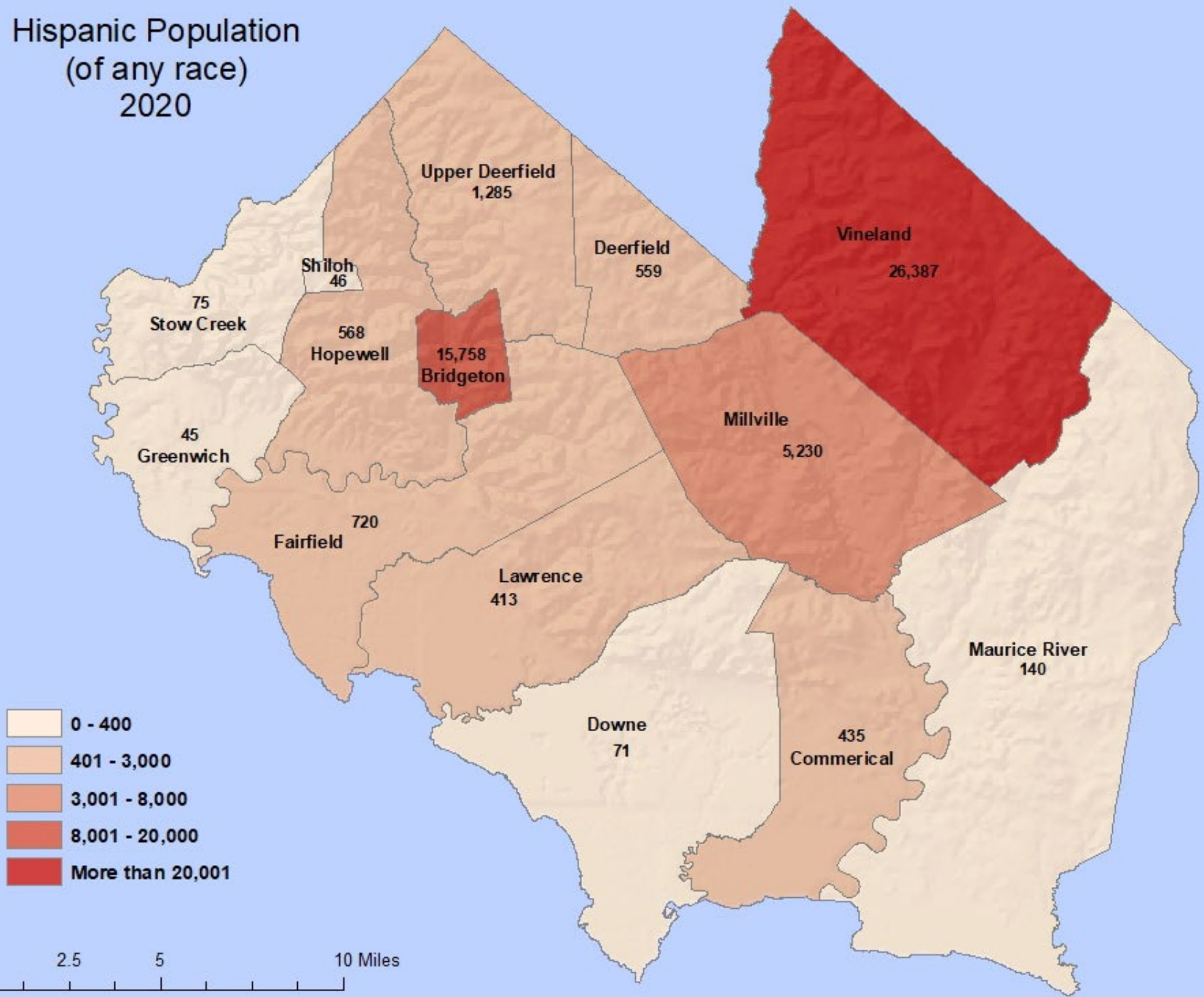


1 Dot = 20 people

0 2.5 5 10 Miles



Hispanic Population (of any race) 2020



- 0 - 400
- 401 - 3,000
- 3,001 - 8,000
- 8,001 - 20,000
- More than 20,001

0 2.5 5 10 Miles



Percent Population 65+ 2010

