

STOW CREEK TOWNSHIP  
CUMBERLAND COUNTY

HOPEWELL TOWNSHIP  
CUMBERLAND COUNTY

LOWER ALLOWAYS CREEK TOWNSHIP  
SALEM COUNTY

DELAWARE BAY

FAIRFIELD TOWNSHIP  
CUMBERLAND COUNTY

DEC. 2025	GUY M. DEFABRITES	34843
DEC. 2020	GUY M. DEFABRITES	34843
DEC. 2019	GUY M. DEFABRITES	34843
DEC. 2018	GUY M. DEFABRITES	34843
DEC. 2017	BARRY S. JONES	27524
DEC. 2016	BARRY S. JONES	27524
DEC. 2015	BARRY S. JONES	27524
DEC. 2014	BARRY S. JONES	27524
DEC. 2013	BARRY S. JONES	27524
DEC. 2012	BARRY S. JONES	27524
DEC. 2011	BARRY S. JONES	27524
DEC. 2010	BARRY S. JONES	27524
DEC. 2009	BARRY S. JONES	27524
DEC. 2008	JOHN M. FRALINGER	29350
DEC. 2007	JOHN M. FRALINGER	29350
DEC. 2006	JOHN M. FRALINGER	29350
DEC. 2005	JOHN M. FRALINGER	29350
DEC. 2004	JOHN M. FRALINGER	29350
DEC. 2003	ALBERT A. FRALINGER, JR.	12588
DEC. 2002	ALBERT A. FRALINGER, JR.	12588
DEC. 2001	ALBERT A. FRALINGER, JR.	12588
DEC. 2000	ALBERT A. FRALINGER, JR.	12588
DEC. 1999	ALBERT A. FRALINGER, JR.	12588
DEC. 1998	ALBERT A. FRALINGER, JR.	12588
DEC. 1997	ALBERT A. FRALINGER, JR.	12588
DATE	REVISIONS BY :	LICENSE NO.
DEC. 1996	ALBERT A. FRALINGER, JR.	12588
DEC. 1995	ALBERT A. FRALINGER, JR.	12588
DEC. 1994	ALBERT A. FRALINGER, JR.	12588
DEC. 1993	ALBERT A. FRALINGER, JR.	12588
DEC. 1992	ALBERT A. FRALINGER, JR.	12588
DEC. 1991	ALBERT A. FRALINGER, JR.	12588
DEC. 1990	ALBERT A. FRALINGER, JR.	12588
DEC. 1989	ALBERT A. FRALINGER, JR.	12588
DEC. 1988	ALBERT A. FRALINGER, JR.	12588
DEC. 1987	ALBERT A. FRALINGER, JR.	12588
DEC. 1986	ALBERT A. FRALINGER, JR.	12588
DEC. 1985	ALBERT A. FRALINGER, JR.	12588
DEC. 1984	ALBERT A. FRALINGER, JR.	12588
DEC. 1983	ALBERT A. FRALINGER, JR.	12588
DEC. 1982	ALBERT A. FRALINGER, JR.	12588
DEC. 1981	ALBERT A. FRALINGER, JR.	12588
DEC. 1980	ALBERT A. FRALINGER, JR.	12588
DEC. 1979	ALBERT A. FRALINGER, JR.	12588
DEC. 1978	ALBERT A. FRALINGER, JR.	12588
DEC. 1977	ALBERT A. FRALINGER, JR.	12588
DEC. 1976	ALBERT A. FRALINGER, JR.	12588
SEPT. 1975	Albert A. Fralinger Jr.	12588
FEB. 1975	Albert A. Fralinger Jr.	12588
OCT. 1974	Albert A. Fralinger Jr.	12588
OCT. 1973	Albert A. Fralinger Jr.	12588
OCT. 1972	Albert A. Fralinger Jr.	12588
MARCH 1972	ALBERT A. FRALINGER, JR.	12588
SEPT. 1971	ALBERT A. FRALINGER, JR.	12588

- LEGEND**
- KEY SHEET
  - ⑥ DETAIL SHEET NUMBER
  - 25 BLOCK NUMBER
  - SHEET LIMIT, BLOCK LIMIT
  - DETAIL SHEET
  - 25 BLOCK NUMBER
  - 7 LOT NUMBER

" THE AREAS, BOUNDARIES AND DIMENSIONS SHOWN ON THIS TAX MAP ARE DERIVED FROM GROUND SURVEYS, AERIAL SURVEYS, AND RECORDED PLANS, MAPS, DEEDS, AND WILLS AND ARE TO BE USED FOR TAX ASSESSMENT PURPOSES ONLY "

I HEREBY CERTIFY THAT THIS MAP HAS BEEN REVISED UNDER MY IMMEDIATE SUPERVISION AND COMPLIES WITH THE LAWS OF THE STATE OF NEW JERSEY  
BARRY S. JONES, P.L.S. LIC. #27524 P.P. LIC. # 4098  
12/31/13

" I HEREBY CERTIFY THAT THIS MAP AND THE SURVEY HAS BEEN MADE UNDER MY IMMEDIATE SUPERVISION, AND COMPLIES WITH THE LAWS OF THE STATE OF NEW JERSEY "

Albert A. Fralinger Jr.  
P.E. & L.S. NEW JERSEY LICENSE #12588

NEW JERSEY DEPARTMENT OF THE TREASURY  
DIVISION OF TAXATION  
PUBLIC UTILITY TAX BUREAU  
APPROVED AS A TAX MAP PURSUANT TO THE PROVISIONS OF CHAPTER 175, LAWS OF 1913, ETC. FOR THE DIRECTOR, DIVISION OF TAXATION.  
GUY M. DEFABRITES, P.E. LIC. #5009  
NOV 13 1970 SERIAL No. 496

I HEREBY CERTIFY THAT THIS MAP HAS BEEN REVISED UNDER MY IMMEDIATE SUPERVISION AND COMPLIES WITH THE LAWS OF THE STATE OF NEW JERSEY.  
GUY M. DEFABRITES, P.L.S. LIC. #34843 P.P. LIC. # 4688

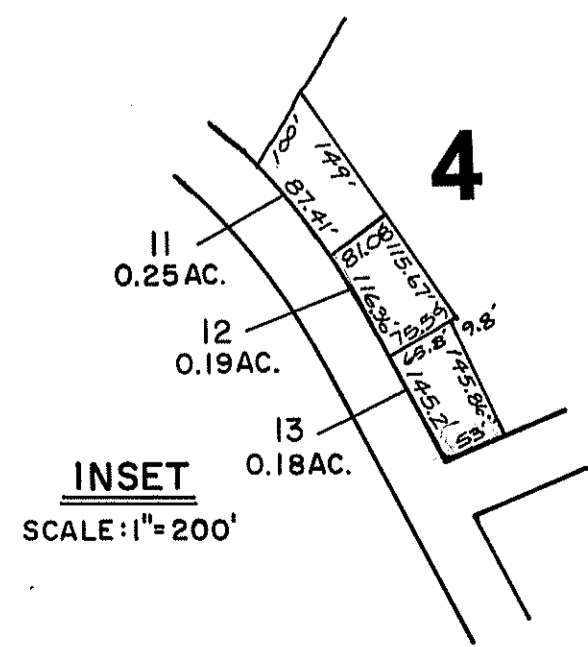
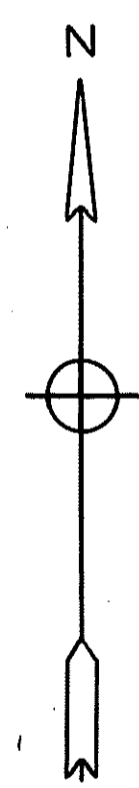
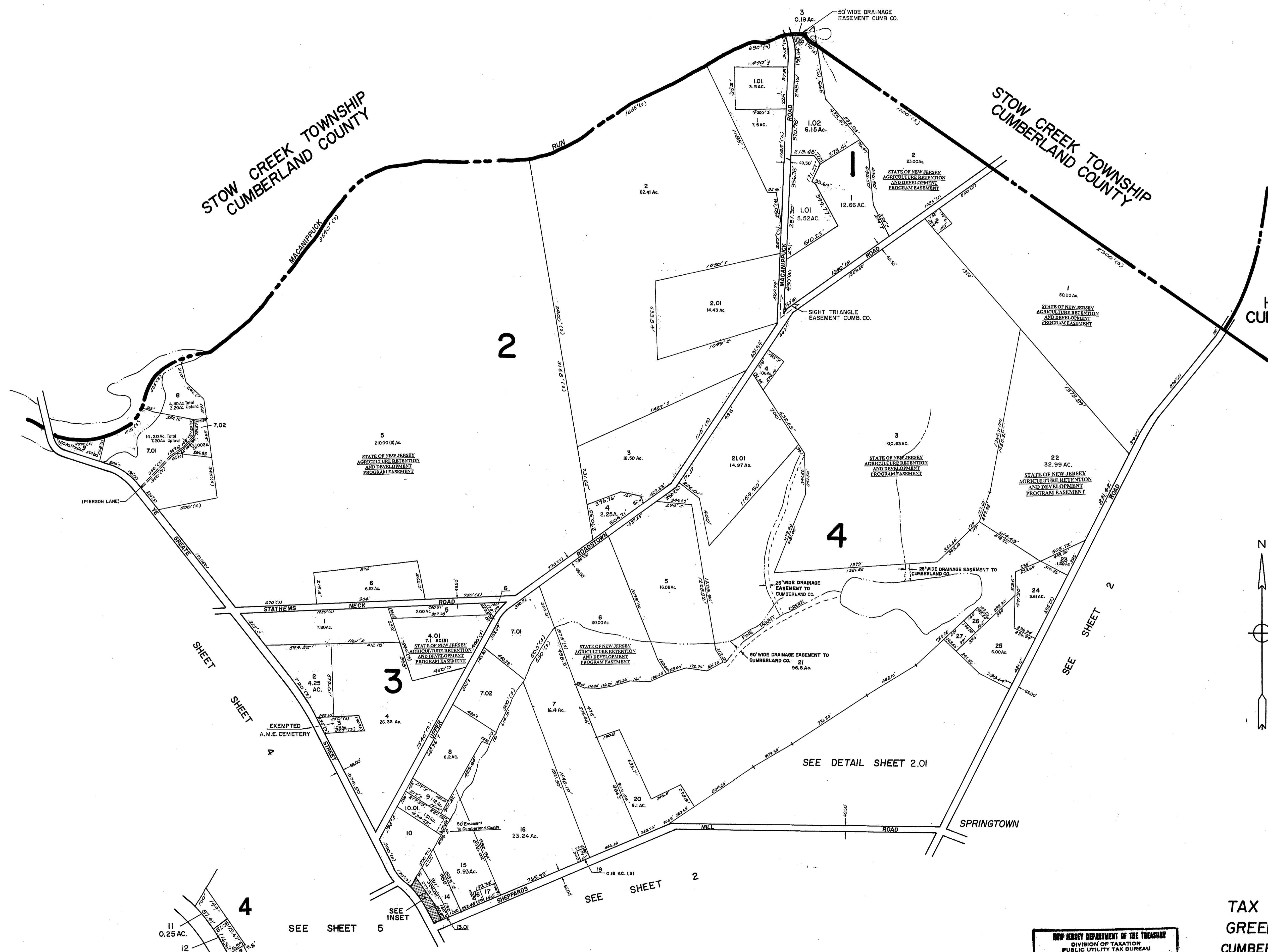
TAX ASSESSMENT MAP  
GREENWICH TOWNSHIP  
CUMBERLAND COUNTY N.J.  
SCALE: 1"=1,760' SEPTEMBER, 1970  
ALBERT A. FRALINGER JR., CONSULTING ENGINEER  
629 SHILOH PIKE, BRIDGETON, N. J. 08302

TO SHOW CONDITIONS AS OF DECEMBER 2025

STOW CREEK TOWNSHIP  
CUMBERLAND COUNTY

STOW CREEK TOWNSHIP  
CUMBERLAND COUNTY

HOPEWELL TOWNSHIP  
CUMBERLAND COUNTY



NEW JERSEY DEPARTMENT OF THE TREASURY  
DIVISION OF TAXATION  
PUBLIC UTILITY TAX BUREAU  
APPROVED AS A TAX MAP PURSUANT TO THE  
PROVISIONS OF CHAPTER 175, LAWS OF 1915, ETC.  
FOR THE DIRECTOR, DIVISION OF TAXATION.  
BY *J. H. Fralinger, Jr.* E.C.L.S.  
I.C.G. #5009 STAT. SUPERVISOR  
DATE NOV 13 1970 SERIAL No. 496

**TAX ASSESSMENT MAP**  
**GREENWICH TOWNSHIP**  
**CUMBERLAND COUNTY, N.J.**  
SCALE: 1" = 400' SEPTEMBER, 1970  
ALBERT A. FRALINGER JR., CONSULTING ENGINEER  
629 SHILOH PIKE, BRIDGETON, N. J. 08302

STOW CREEK TOWNSHIP  
CUMBERLAND COUNTY

HOPEWELL TOWNSHIP  
CUMBERLAND COUNTY

STATE OF NEW JERSEY  
AGRICULTURE RETENTION  
AND DEVELOPMENT  
PROGRAM EASEMENT

STATE OF NEW JERSEY  
AGRICULTURE RETENTION  
AND DEVELOPMENT  
PROGRAM EASEMENT

STATE OF NEW JERSEY  
AGRICULTURE RETENTION  
AND DEVELOPMENT  
PROGRAM EASEMENT

EXEMPTED  
THE STATE OF NEW JERSEY  
DEPT. OF ENVIRONMENTAL  
PROTECTION

EXEMPTED  
COHANZICK RANGERS

NOTE: BLOCK 5, LOT 18 IS UNASSIGNED

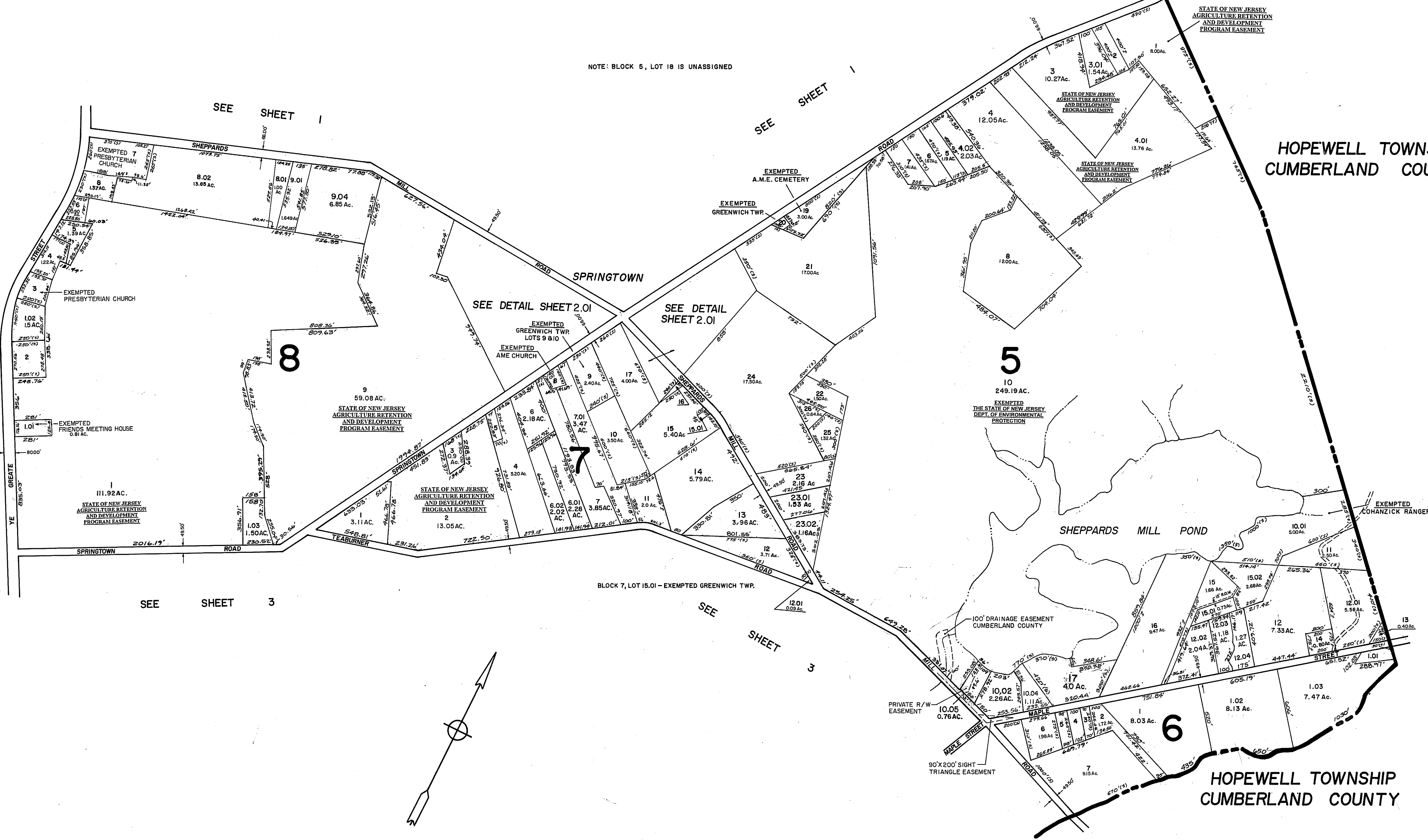
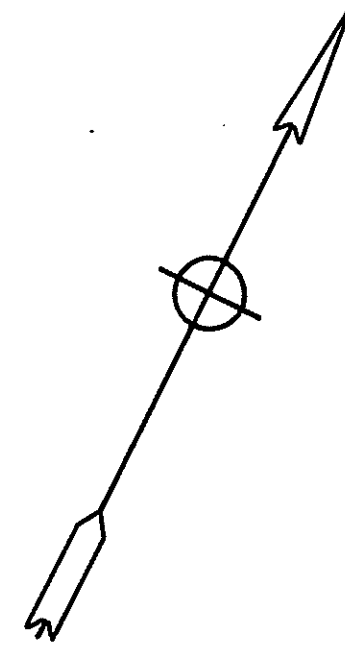
SEE SHEET 5

SEE SHEET 1

SEE SHEET 1

SEE SHEET 3

SEE SHEET 3

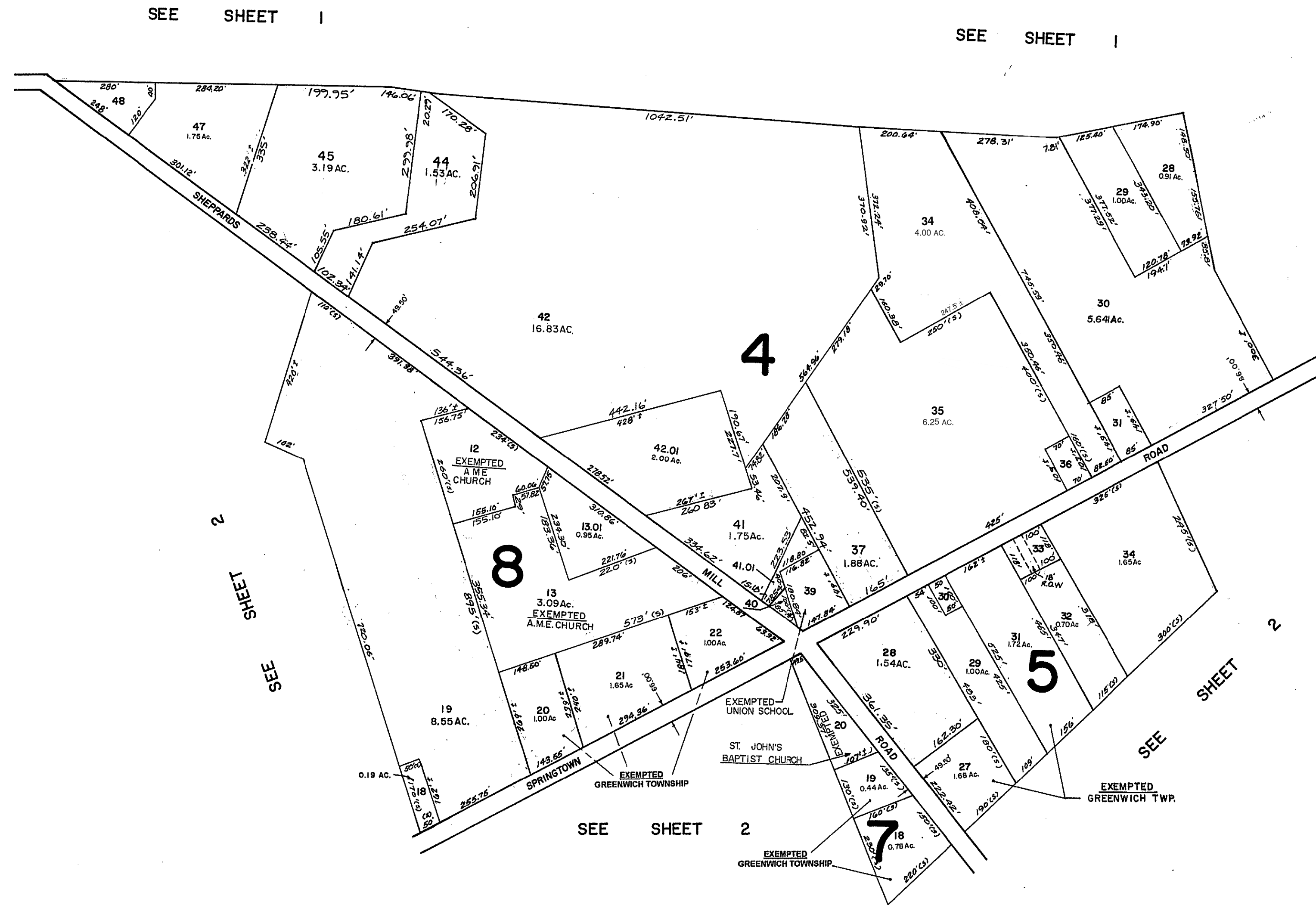
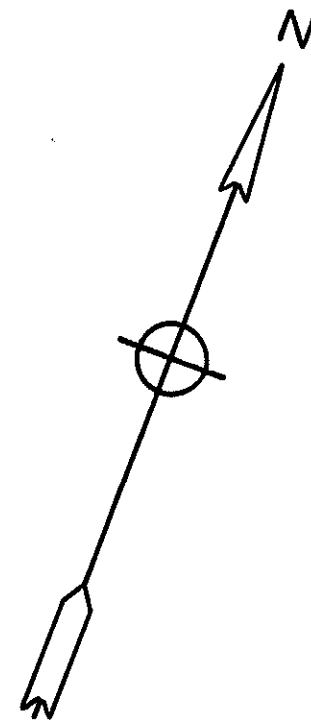


TAX ASSESSMENT MAP  
GREENWICH TOWNSHIP  
CUMBERLAND COUNTY, N.J.

SCALE: 1" = 400'  
SEPTEMBER, 1970  
ALBERTA FRALINGER JR., CONSULTING ENGINEER  
629 SHILOH PIKE, BRIDGETON, N. J. 08302

NEW JERSEY DEPARTMENT OF THE TREASURY  
DIVISION OF TAXATION  
PUBLIC UTILITY TAX BUREAU  
APPROVED AS A TAX MAP PURSUANT TO THE  
PROVISIONS OF CHAPTER 115, LAWS OF 1915, ETC.  
FOR THE DIRECTOR, DIVISION OF TAXATION.  
J. H. [Signature] E. L. S.  
L.C. #5009 STAT. SUPERVISOR  
DATE: NOV 13 1970, SERIAL No. 496

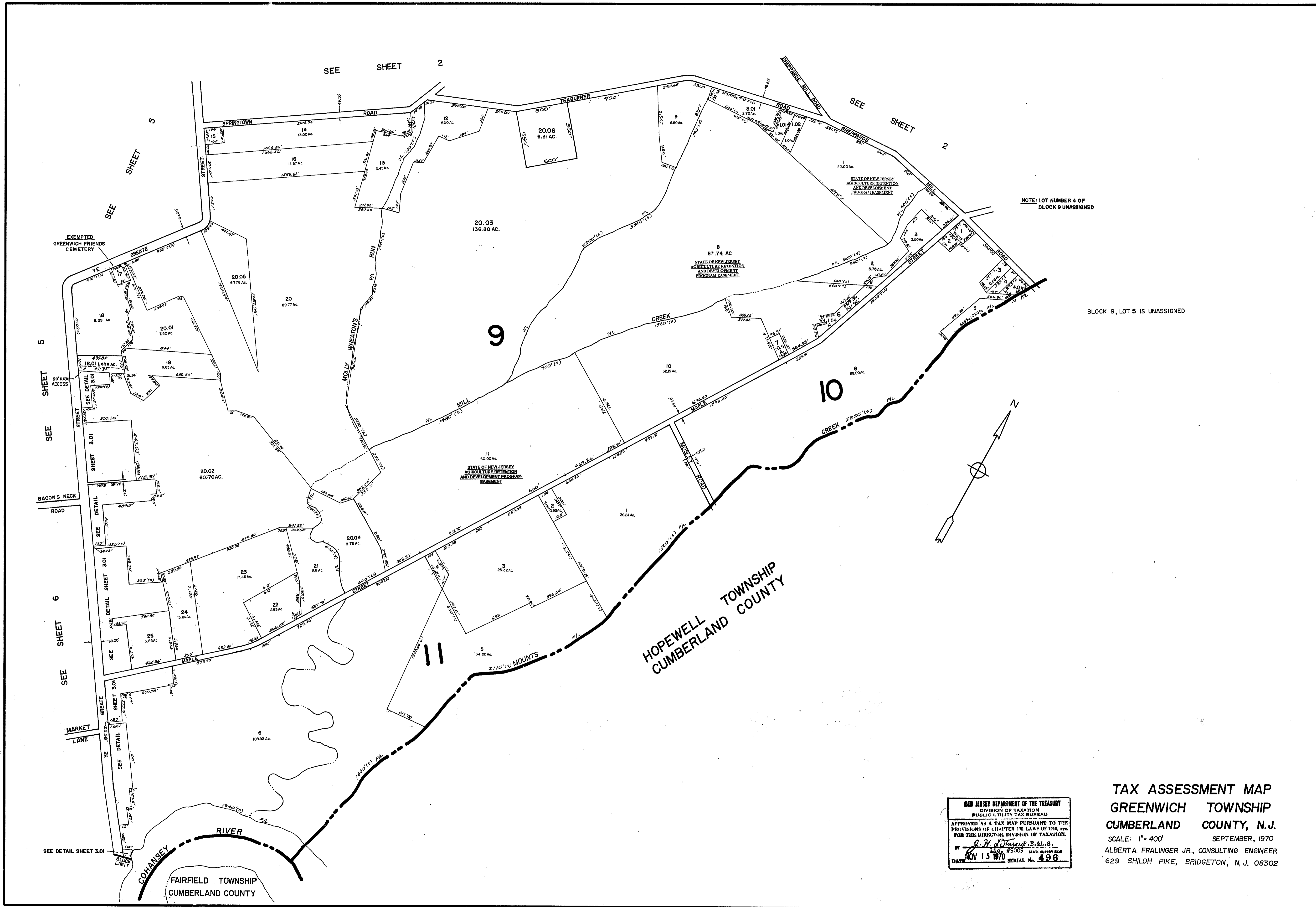
NOTE: BLOCK 4, LOT 46 IS UNASSIGNED  
" 4, " 43 "



SPRINGTOWN

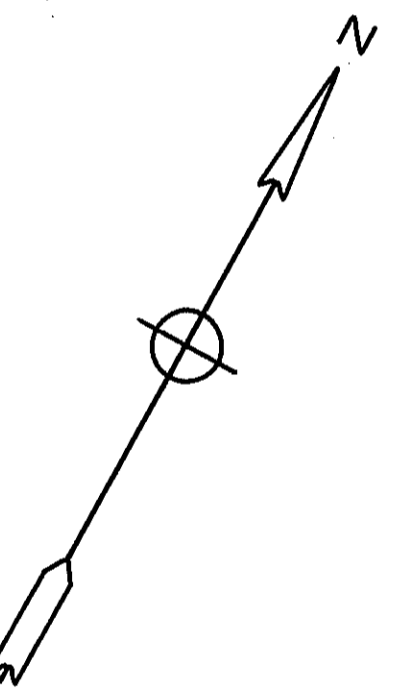
NEW JERSEY DEPARTMENT OF THE TREASURY  
DIVISION OF TAXATION  
PUBLIC UTILITY TAX BUREAU  
APPROVED AS A TAX MAP PURSUANT TO THE  
PROVISIONS OF CHAPTER 125, LAWS OF 1913, ETC.  
FOR THE DIRECTOR, DIVISION OF TAXATION.  
BY *A. H. D. [Signature]* P. E. & L. S.  
LIC. #5009 STATE SUPERVISOR  
DATE NOV 13 1970 SERIAL No. 496

TAX ASSESSMENT MAP  
GREENWICH TOWNSHIP  
CUMBERLAND COUNTY, N.J.  
SCALE: 1"=200' SEPTEMBER, 1970  
ALBERTA. FRALINGER JR., CONSULTING ENGINEER  
629 SHILOH PIKE, BRIDGETON, N. J. 08302



NOTE: LOT NUMBER 4 OF BLOCK 9 UNASSIGNED

BLOCK 9, LOT 5 IS UNASSIGNED

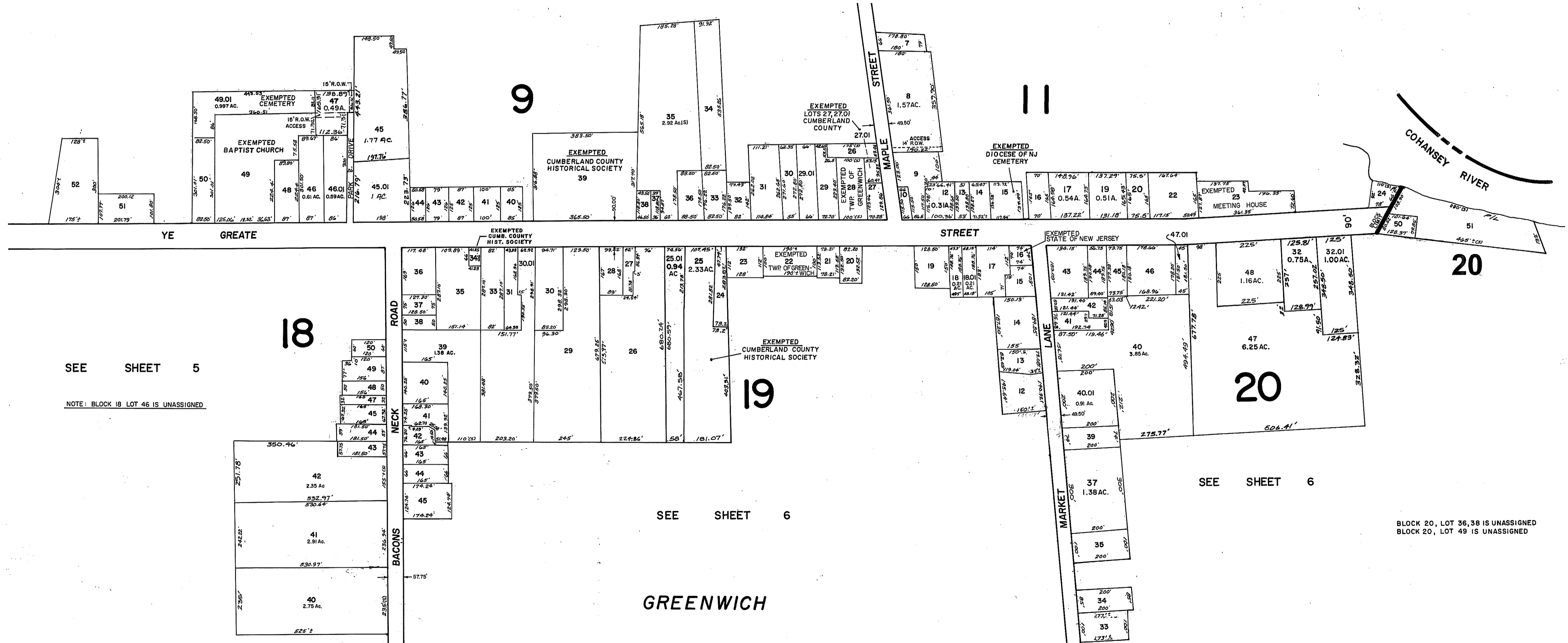
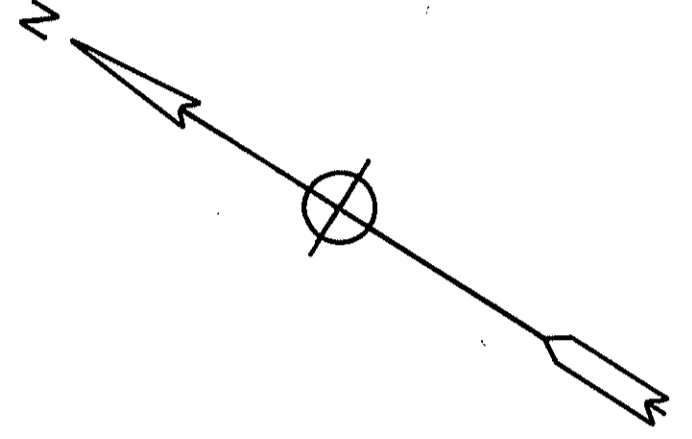


NEW JERSEY DEPARTMENT OF THE TREASURY  
 DIVISION OF TAXATION  
 PUBLIC UTILITY TAX BUREAU  
 APPROVED AS A TAX MAP PURSUANT TO THE PROVISIONS OF CHAPTER 175, LAWS OF 1916, ETC. FOR THE DIRECTOR, DIVISION OF TAXATION.  
 BY *Albert A. Fralinger Jr.* STATE SUPERVISOR  
 NOV 13 1970 SERIAL No. 496

TAX ASSESSMENT MAP  
 GREENWICH TOWNSHIP  
 CUMBERLAND COUNTY, N.J.  
 SCALE: 1" = 400'  
 SEPTEMBER, 1970  
 ALBERT A. FRALINGER JR., CONSULTING ENGINEER  
 629 SHILOH PIKE, BRIDGETON, N. J. 08302

SEE SHEET 3

SEE SHEET 3



SEE SHEET 5

NOTE: BLOCK 18 LOT 46 IS UNASSIGNED

SEE SHEET 6

GREENWICH

SEE SHEET 6

BLOCK 20, LOT 36, 38 IS UNASSIGNED  
BLOCK 20, LOT 49 IS UNASSIGNED

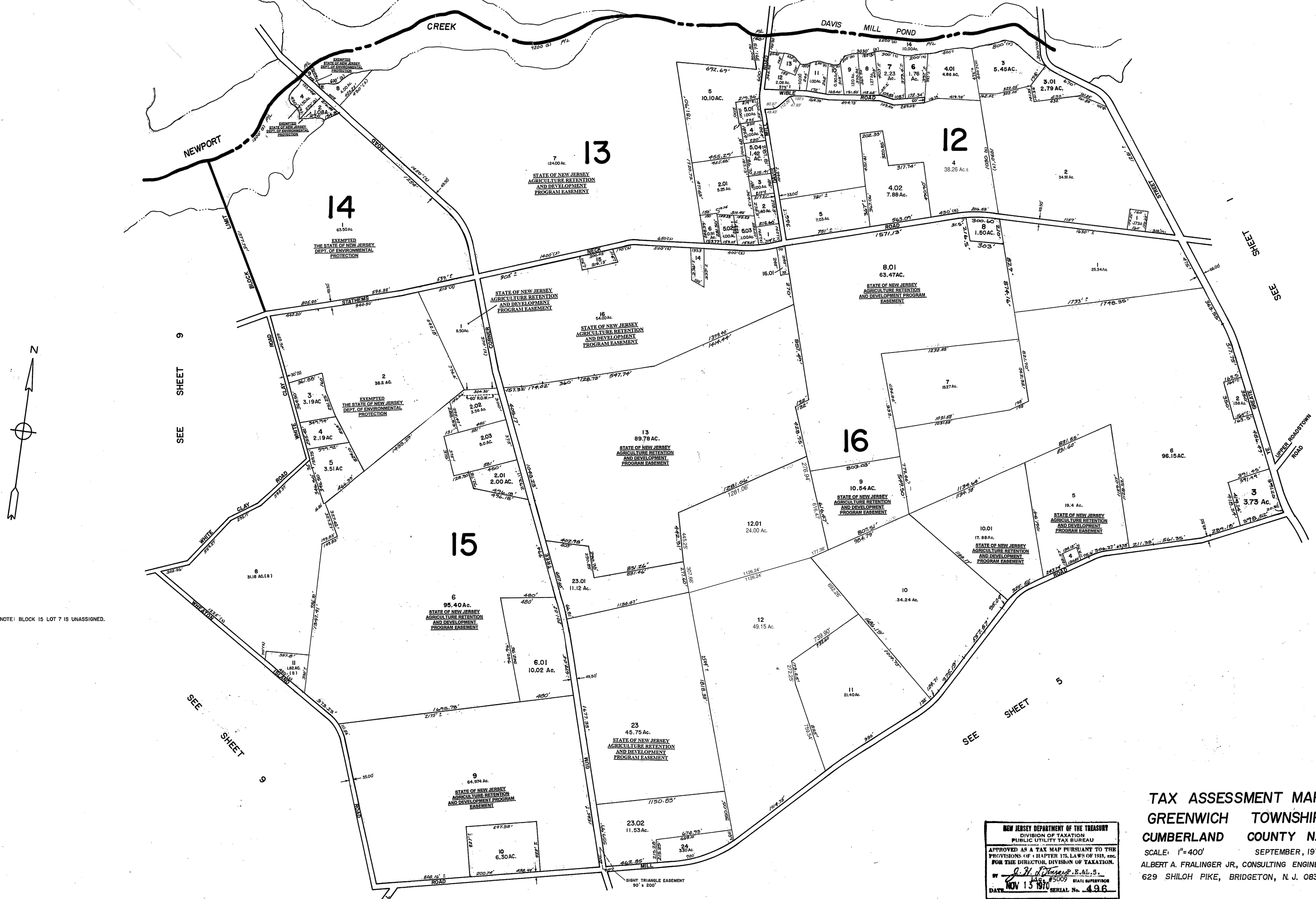
NOTE: BLOCK 11 LOT 18 IS UNASSIGNED

TAX ASSESSMENT MAP  
GREENWICH TOWNSHIP  
CUMBERLAND COUNTY N.J.

SCALE: 1"=200' SEPTEMBER, 1970  
ALBERT A. FRALINGER JR., CONSULTING ENGINEER  
629 SHILOH PIKE, BRIDGETON, N. J. 08302

NEW JERSEY DEPARTMENT OF THE TREASURY  
DIVISION OF TAXATION  
PUBLIC UTILITY TAX BUREAU  
APPROVED AS A TAX MAP PURSUANT TO THE  
PROVISIONS OF CHAPTER 115, LAWS OF 1915, etc.  
FOR THE DIRECTOR, DIVISION OF TAXATION.  
*J. H. Fralinger, Jr.* E.E.L.S.  
L.L.C. #5009 MAIL PERMIT #496  
DATE NOV 13 1970 SERIAL No. 496

STOW CREEK TOWNSHIP  
CUMBERLAND COUNTY



NOTE: BLOCK 15 LOT 7 IS UNASSIGNED.

SEE SHEET 9

SEE SHEET 9

SEE SHEET 5

SEE SHEET 5

SEE SHEET 1

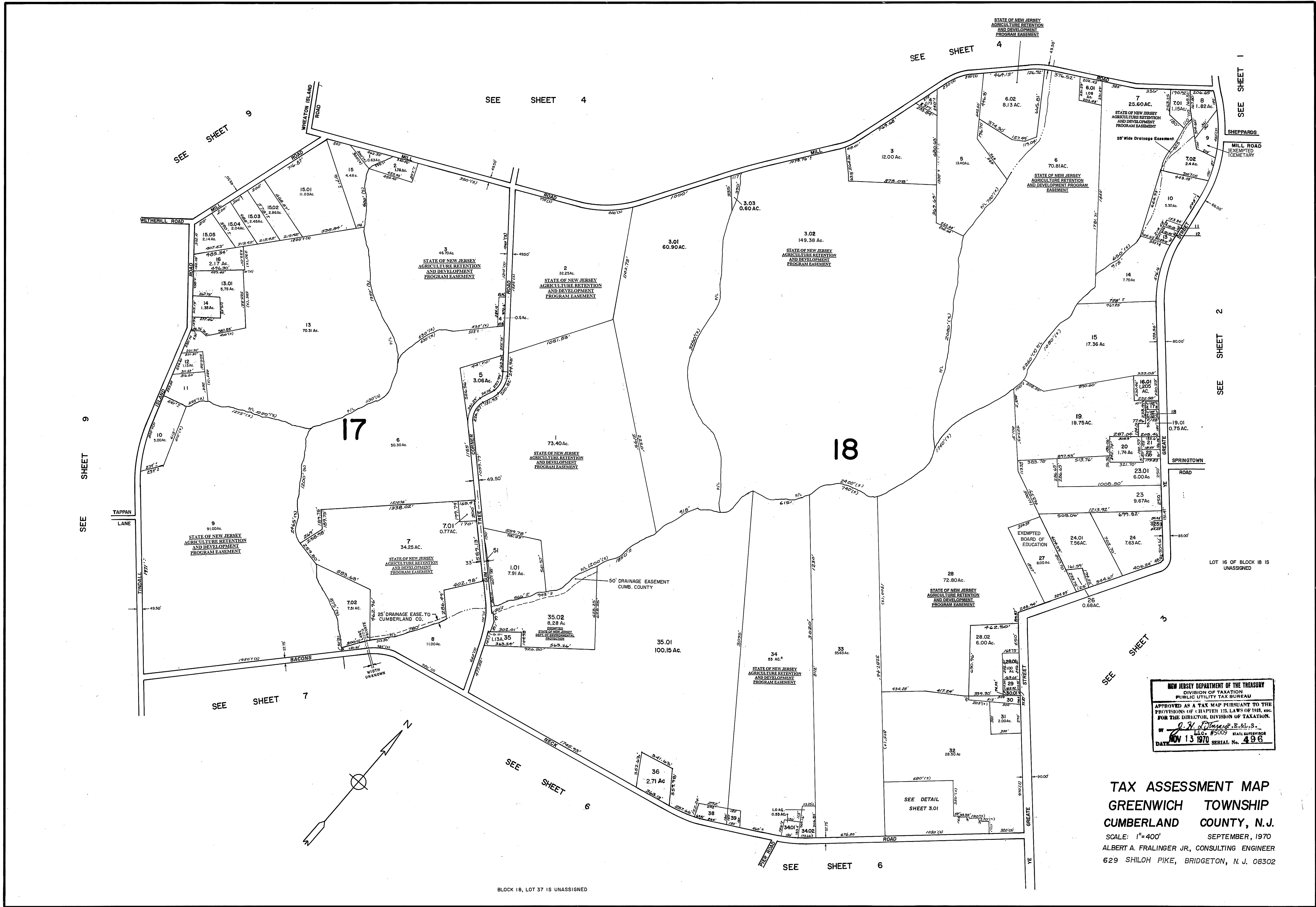
TAX ASSESSMENT MAP  
GREENWICH TOWNSHIP  
CUMBERLAND COUNTY N.J.

SCALE: 1"=400' SEPTEMBER, 1970  
ALBERT A. FRALINGER JR., CONSULTING ENGINEER  
629 SHILOH PIKE, BRIDGETON, N. J. 08302

NEW JERSEY DEPARTMENT OF THE TREASURY  
DIVISION OF TAXATION  
PUBLIC UTILITY TAX BUREAU

APPROVED AS A TAX MAP PURSUANT TO THE PROVISIONS OF CHAPTER 175, LAWS OF 1973, SEC. 1 FOR THE DIVISION OF TAXATION.

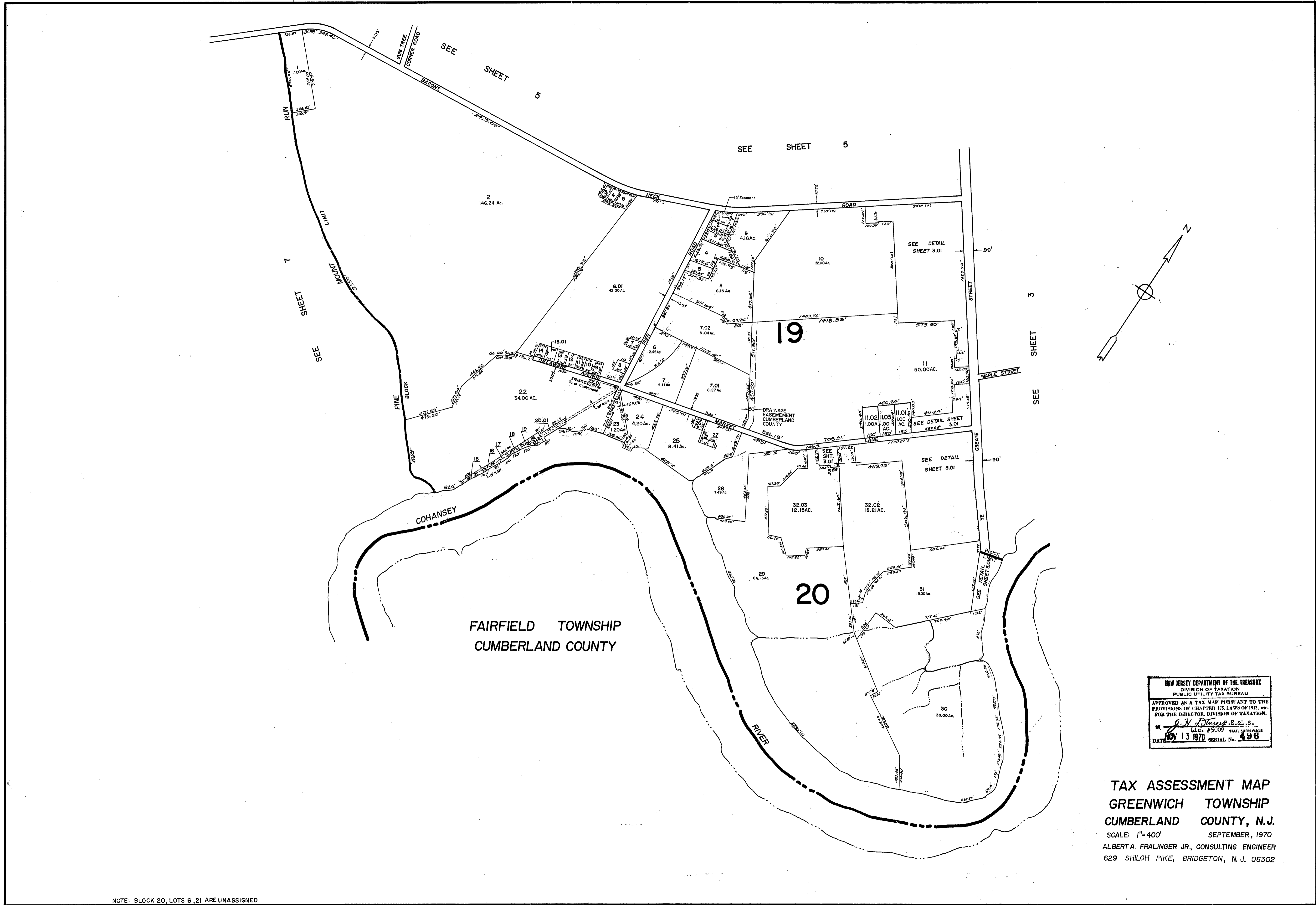
BY *A. H. P. [Signature]* S.E.L.S.  
DATE NOV 13 1970 SERIAL No. 496



NEW JERSEY DEPARTMENT OF THE TREASURY  
 DIVISION OF TAXATION  
 PUBLIC UTILITY TAX BUREAU  
 APPROVED AS A TAX MAP PURSUANT TO THE  
 PROVISIONS OF CHAPTER 115, LAWS OF 1970, ETC.  
 FOR THE DIRECTOR, DIVISION OF TAXATION.  
 BY *[Signature]* S.E. & S.  
 LIC. #5009 STATE SUPERVISOR  
 DATE NOV 13 1970 SERIAL No. 496

**TAX ASSESSMENT MAP**  
**GREENWICH TOWNSHIP**  
**CUMBERLAND COUNTY, N.J.**  
 SCALE: 1" = 400' SEPTEMBER, 1970  
 ALBERT A. FRALINGER JR., CONSULTING ENGINEER  
 629 SHILOH PIKE, BRIDGETON, N. J. 08302

BLOCK 18, LOT 37 IS UNASSIGNED

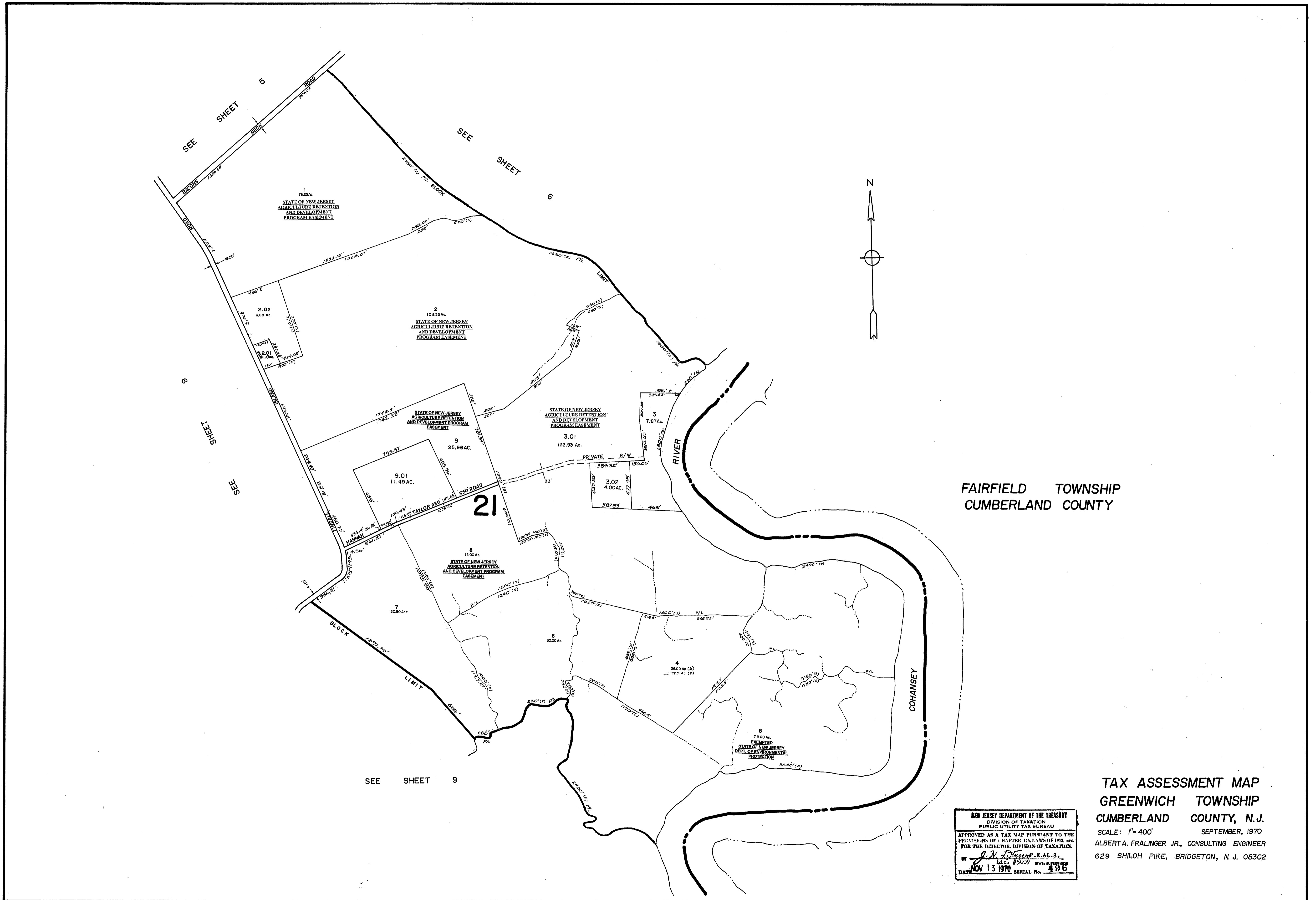


FAIRFIELD TOWNSHIP  
CUMBERLAND COUNTY

NEW JERSEY DEPARTMENT OF THE TREASURY  
DIVISION OF TAXATION  
PUBLIC UTILITY TAX BUREAU  
APPROVED AS A TAX MAP PURSUANT TO THE  
PROVISIONS OF CHAPTER 115, LAWS OF 1965, ETC.  
FOR THE DIRECTOR, DIVISION OF TAXATION.  
BY *[Signature]* P. E. & L. S.  
LIC. # 5009 STATE SUPERVISOR  
DATE NOV 13 1970 SERIAL No. 496

TAX ASSESSMENT MAP  
GREENWICH TOWNSHIP  
CUMBERLAND COUNTY, N.J.  
SCALE: 1"=400' SEPTEMBER, 1970  
ALBERT A. FRALINGER JR., CONSULTING ENGINEER  
629 SHILOH PIKE, BRIDGETON, N. J. 08302

NOTE: BLOCK 20, LOTS 6, 21 ARE UNASSIGNED



FAIRFIELD TOWNSHIP  
CUMBERLAND COUNTY

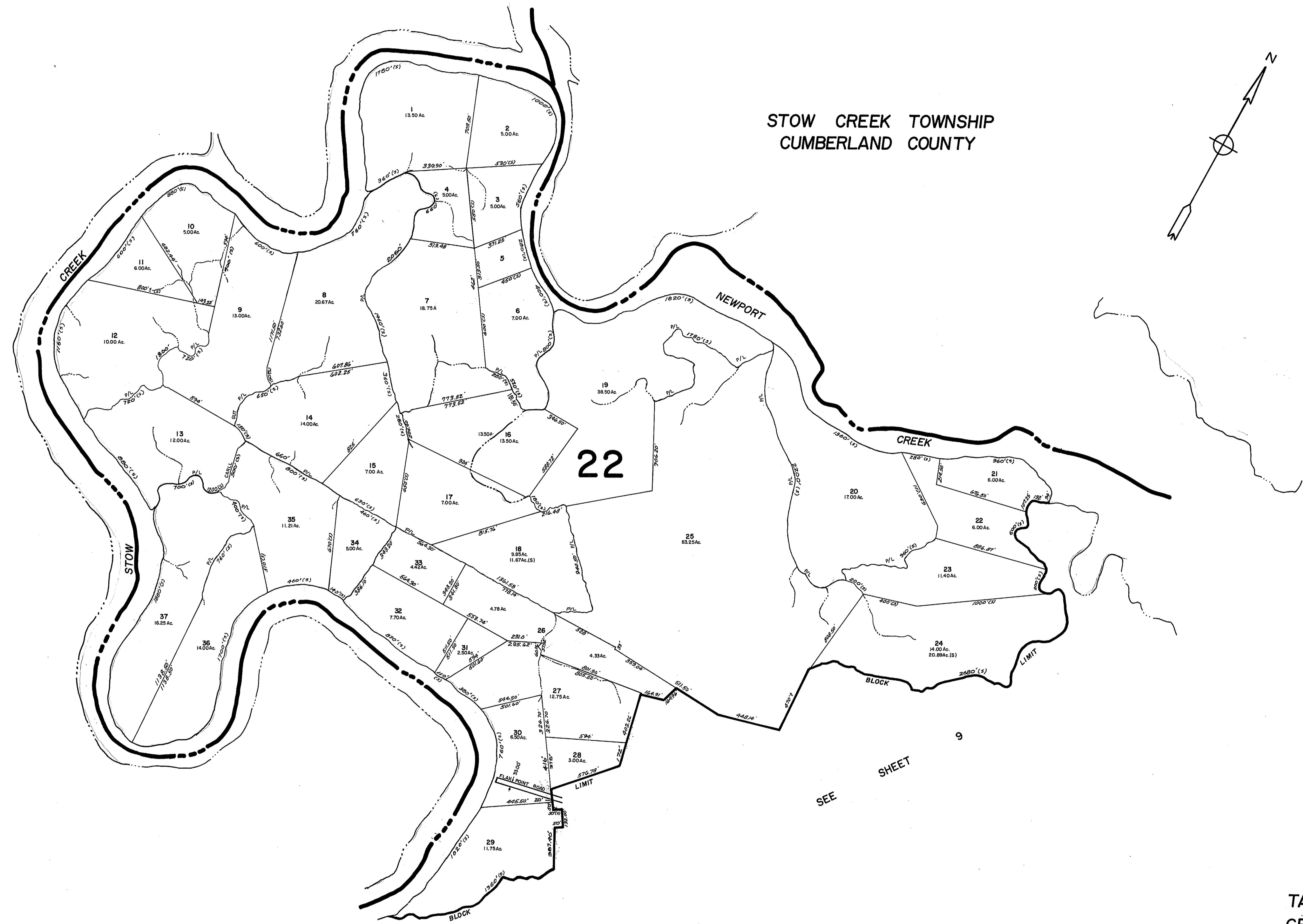
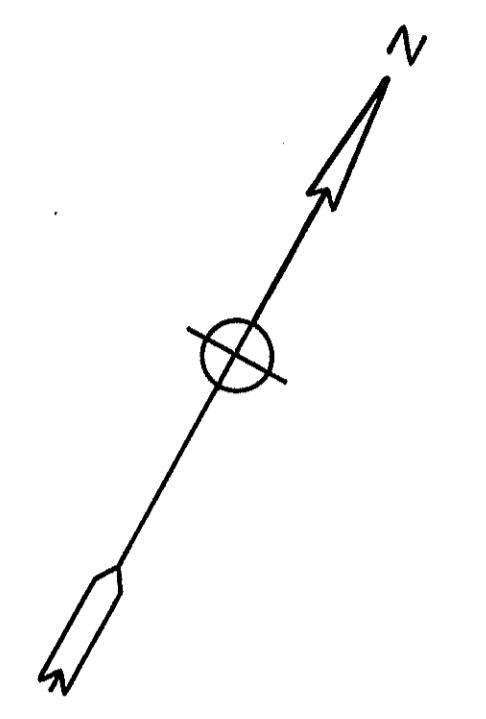
TAX ASSESSMENT MAP  
GREENWICH TOWNSHIP  
CUMBERLAND COUNTY, N.J.  
SCALE: 1" = 400' SEPTEMBER, 1970

ALBERT A. FRALINGER JR., CONSULTING ENGINEER  
629 SHILOH PIKE, BRIDGETON, N. J. 08302

NEW JERSEY DEPARTMENT OF THE TREASURY  
DIVISION OF TAXATION  
PUBLIC UTILITY TAX BUREAU  
APPROVED AS A TAX MAP PURSUANT TO THE  
PROVISIONS OF CHAPTER 125 LAWS OF 1915, ETC.  
FOR THE DIRECTOR, DIVISION OF TAXATION.  
BY *[Signature]* E. & L. S.  
LIC. #5009 STATE SUPERVISOR  
DATE NOV 13 1970 SERIAL No. 496

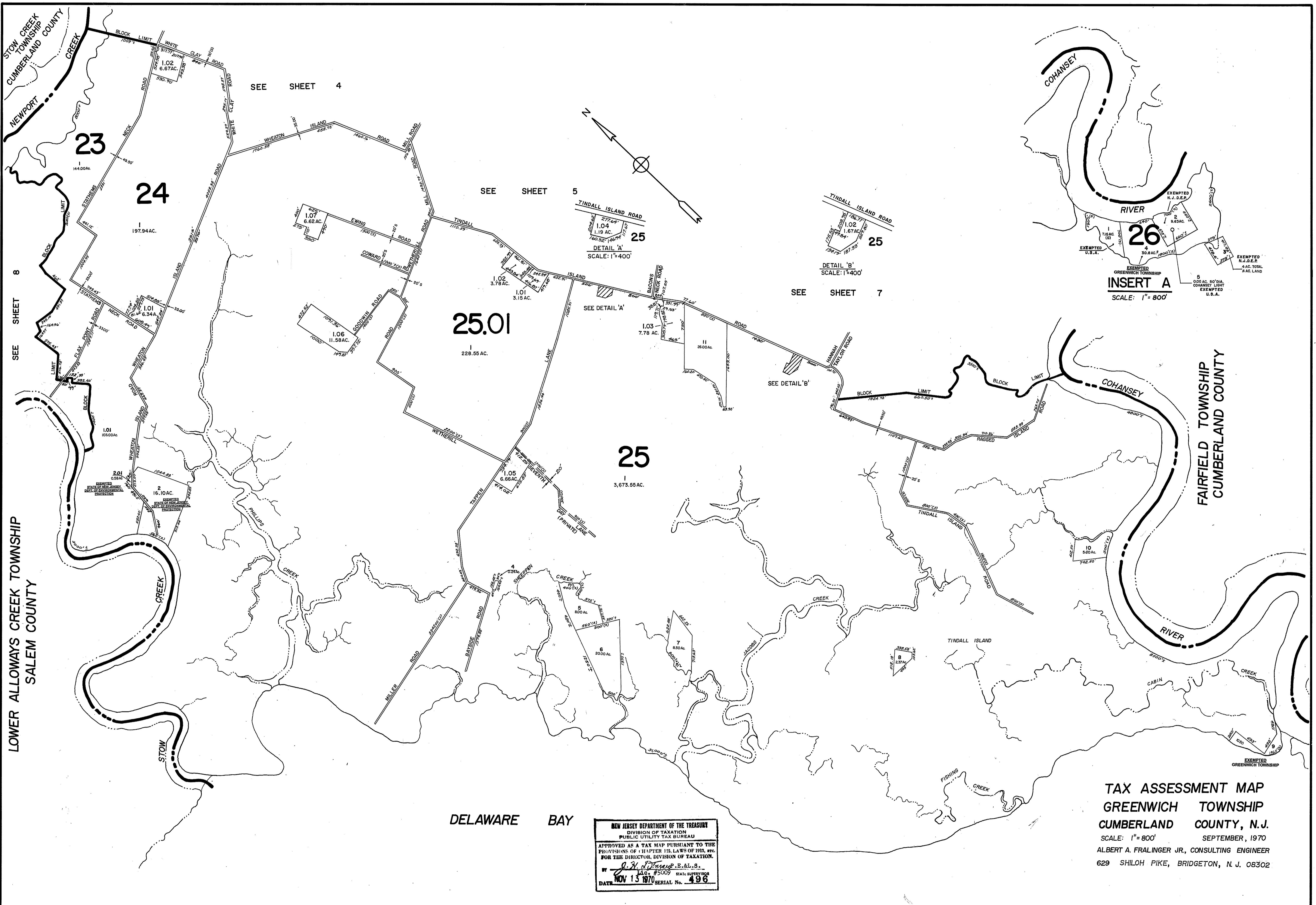
LOWER ALLOWAYS CREEK TOWNSHIP  
SALEM COUNTY

STOW CREEK TOWNSHIP  
CUMBERLAND COUNTY



TAX ASSESSMENT MAP  
GREENWICH TOWNSHIP  
CUMBERLAND COUNTY, N.J.  
SCALE: 1" = 400' SEPTEMBER, 1970  
ALBERT A. FRALINGER JR., CONSULTING ENGINEER  
629 SHILOH PIKE, BRIDGETON, N.J. 08302

NEW JERSEY DEPARTMENT OF THE TREASURY  
DIVISION OF TAXATION  
PUBLIC UTILITY TAX BUREAU  
APPROVED AS A TAX MAP PURSUANT TO THE  
PROVISIONS OF CHAPTER 125, LAWS OF 1951, ETC.  
FOR THE DIRECTOR, DIVISION OF TAXATION.  
BY *[Signature]* S.E.L.S.  
DATE NOV 13 1970 SERIAL No. 496



LOWER ALLOWAYS CREEK TOWNSHIP  
SALEM COUNTY

SEE SHEET 8

SEE SHEET 4

SEE SHEET 5

SEE SHEET 7

SCALE: 1" = 800'

DELAWARE BAY

NEW JERSEY DEPARTMENT OF THE TREASURY  
DIVISION OF TAXATION  
PUBLIC UTILITY TAX BUREAU  
APPROVED AS A TAX MAP PURSUANT TO THE  
PROVISIONS OF CHAPTER 175, LAWS OF 1915, etc.  
FOR THE DIRECTOR, DIVISION OF TAXATION.  
BY *A. H. Fralinger* S. & L. S.  
DATE NOV 13 1970 SERIAL No. 496

TAX ASSESSMENT MAP  
GREENWICH TOWNSHIP  
CUMBERLAND COUNTY, N.J.  
SCALE: 1" = 800' SEPTEMBER, 1970  
ALBERT A. FRALINGER JR., CONSULTING ENGINEER  
629 SHILOH PIKE, BRIDGETON, N. J. 08302

SEE INSERT A