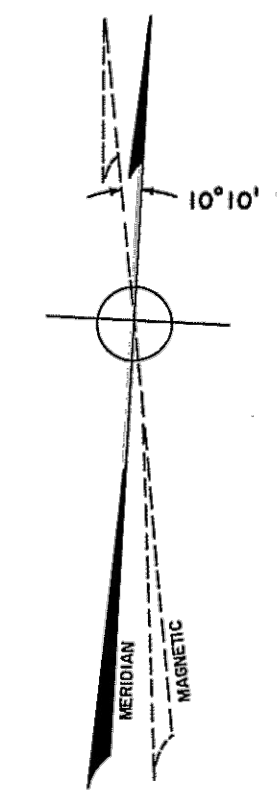


DATE	REVISIONS BY	LICENSE
DEC 2015	BARRY S. JONES	27524
DEC 2016	BARRY S. JONES	27524
DEC 2017	BARRY S. JONES	27524
DEC 2018	GUY M. DEFABRITES	34843
DEC 2019	GUY M. DEFABRITES	34843
DEC 2020	GUY M. DEFABRITES	34843
DEC 2021	GUY M. DEFABRITES	34843
DEC 2022	GUY M. DEFABRITES	34843
DEC 2025	GUY M. DEFABRITES	34843

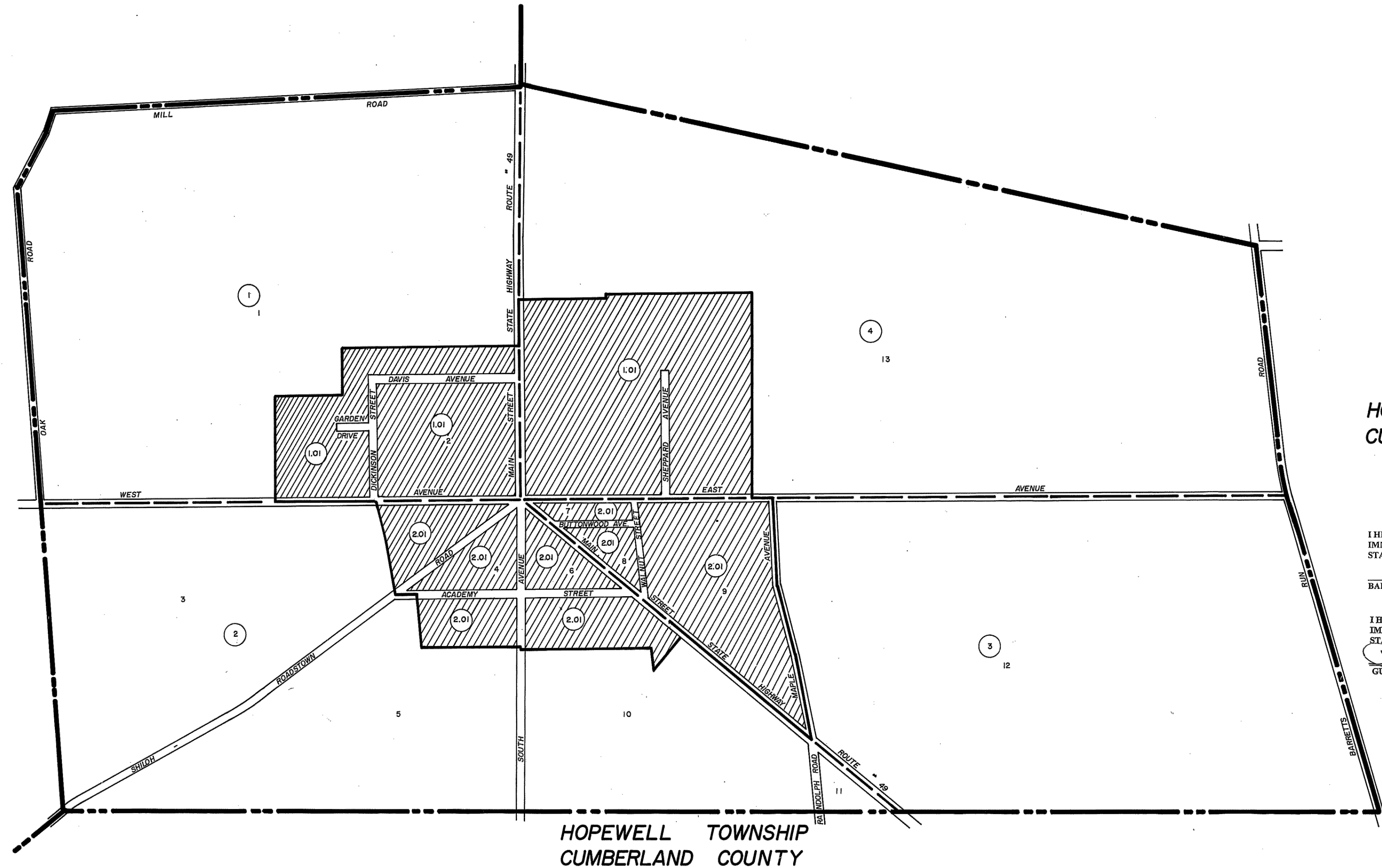
STOW CREEK TOWNSHIP
CUMBERLAND COUNTY

HOPEWELL TOWNSHIP
CUMBERLAND COUNTY



STOW CREEK TOWNSHIP
CUMBERLAND COUNTY

HOPEWELL TOWNSHIP
CUMBERLAND COUNTY



I HEREBY CERTIFY THAT THIS MAP HAS BEEN REVISED UNDER MY IMMEDIATE SUPERVISION AND COMPLIES WITH THE LAWS OF THE STATE OF NEW JERSEY.
12/31/13
BARRY S. JONES, P.L.S. LIC. #27524 P.P. LIC. # 4098

I HEREBY CERTIFY THAT THIS MAP HAS BEEN REVISED UNDER MY IMMEDIATE SUPERVISION AND COMPLIES WITH THE LAWS OF THE STATE OF NEW JERSEY.
1/14/19
GUY M. DEFABRITES, P.L.S. LIC. #34843 P.P. LIC. # 4688

DATE	REVISIONS BY:	LICENSE NO.
DEC. 2014	BARRY S. JONES	27524
DEC. 2013	BARRY S. JONES	27524
DEC. 2012	BARRY S. JONES	27524
DEC. 2011	BARRY S. JONES	27524
DEC. 2010	BARRY S. JONES	27524
DEC. 2009	BARRY S. JONES	27524
DEC. 2008	JOHN M. FRALINGER	29350
DEC. 2005	JOHN M. FRALINGER	29350
DEC. 2004	JOHN M. FRALINGER	29350
DEC. 2003	ALBERT A. FRALINGER, JR.	12588
DEC. 2002	ALBERT A. FRALINGER, JR.	12588
DEC. 2001	ALBERT A. FRALINGER, JR.	12588
DEC. 2000	ALBERT A. FRALINGER, JR.	12588
DEC. 1999	ALBERT A. FRALINGER, JR.	12588
DEC. 1998	ALBERT A. FRALINGER, JR.	12588
DEC. 1997	ALBERT A. FRALINGER, JR.	12588
12-6-96	ALBERT A. FRALINGER, JR.	12588
DEC. 1995	ALBERT A. FRALINGER, JR.	12588
JAN. 1994	ALBERT A. FRALINGER, JR.	12588
DEC. 1991	ALBERT A. FRALINGER, JR.	12588
DEC. 1990	ALBERT A. FRALINGER, JR.	12588
DEC. 1989	ALBERT A. FRALINGER, JR.	12588
DEC. 1988	ALBERT A. FRALINGER, JR.	12588
DEC. 1987	ALBERT A. FRALINGER, JR.	12588
DEC. 1986	ALBERT A. FRALINGER, JR.	12588
SEPT. 1985	ALBERT A. FRALINGER, JR., P.E., L.S.	12588
APRIL 1976	ALBERT A. FRALINGER, JR.	12588
JULY 1972	ALBERT A. FRALINGER, JR.	12588

LEGEND
 SHEET NUMBERS
 DETAIL SHEETS
 BLOCK NUMBERS
 SHEET LIMITS

" THE AREAS, BOUNDARIES AND DIMENSIONS SHOWN ON THIS TAX MAP ARE DERIVED FROM GROUND SURVEYS, AERIAL SURVEYS, AND RECORDED PLANS, MAPS, DEEDS, AND WILLS AND IS TO BE USED FOR TAX ASSESSMENT PURPOSES ONLY."

I HEREBY CERTIFY THAT THIS MAP HAS BEEN REVISED UNDER MY IMMEDIATE SUPERVISION AND COMPLIES WITH THE LAWS OF THE STATE OF NEW JERSEY.

 ALBERT A. FRALINGER, JR., P.E. & L.S.
 NEW JERSEY LICENSE NO. 12588
 MICHAEL J. FRALINGER, P.L.S., L.I.C. #29350

" I HEREBY CERTIFY THIS MAP HAS BEEN REVISED UNDER MY SUPERVISION, AND COMPLIES WITH THE LAWS OF THE STATE OF NEW JERSEY."

 ALBERT A. FRALINGER, JR., P.E. & L.S.
 NEW JERSEY LICENSE NO. 12588

" I HEREBY CERTIFY THAT THIS MAP AND THE SURVEY HAS BEEN MADE UNDER MY IMMEDIATE SUPERVISION, AND COMPLIES WITH THE LAWS OF THE STATE OF NEW JERSEY"

 ALBERT A. FRALINGER, JR.
 P.E. & L.S. NEW JERSEY LICENSE #12588
 DECEMBER, 1970

NEW JERSEY DEPARTMENT OF THE TREASURY
 DIVISION OF TAXATION
 PUBLIC UTILITY TAX BUREAU
 APPROVED AS A TAX MAP PURSUANT TO THE PROVISIONS OF CHAPTER 15, LAWS OF 1913, ETC. FOR THE DIRECTOR, DIVISION OF TAXATION.

 DATE DEC 23 1970 SERIAL No. 499

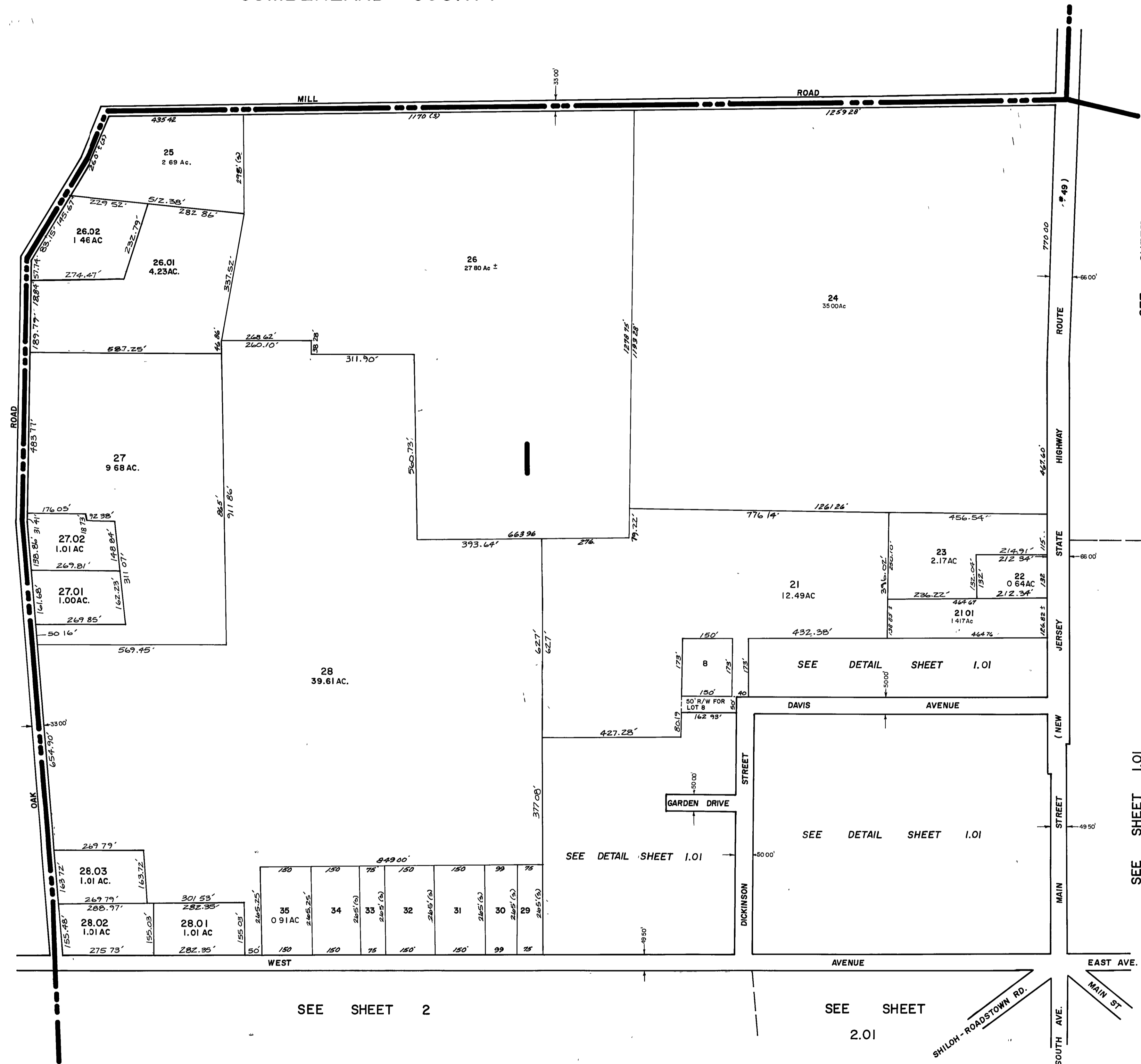
TAX ASSESSMENT MAP
 BOROUGH OF SHILOH
 CUMBERLAND COUNTY N.J.
 SCALE: 1" = 400'
 DECEMBER, 1970
 ALBERT A. FRALINGER JR., CONSULTING ENGINEER
 629 SHILOH PIKE, BRIDGETON, NEW JERSEY 08302

TO SHOW CONDITIONS AS OF DECEMBER 2025

STOW CREEK TOWNSHIP
CUMBERLAND COUNTY

HOPEWELL TOWNSHIP
CUMBERLAND COUNTY

STOW CREEK TOWNSHIP
CUMBERLAND COUNTY



SEE SHEET 2

SEE SHEET 2.01

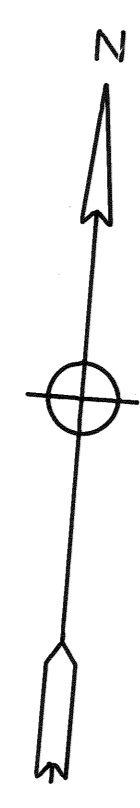
SEE SHEET 1.01

SEE SHEET 4

NEW JERSEY DEPARTMENT OF THE TREASURY
DIVISION OF TAXATION
PUBLIC UTILITY TAX BUREAU
APPROVED AS A TAX MAP PURSUANT TO THE
PROVISIONS OF CHAPTER 125, LAWS OF 1913, ETC.
FOR THE DIRECTOR, DIVISION OF TAXATION
BY *J. H. Fralinger*
L.C. #5009 STAT. SUPERVISOR
DATE DEC 23 1970 SERIAL No. 439

TAX ASSESSMENT MAP
BOROUGH OF SHILOH
CUMBERLAND COUNTY N.J.
SCALE: 1" = 200'
DECEMBER, 1970
ALBERT A. FRALINGER JR., CONSULTING ENGINEER
629 SHILOH PIKE, BRIDGETON, NEW JERSEY 08302

SEE SHEET 4



SEE SHEET I



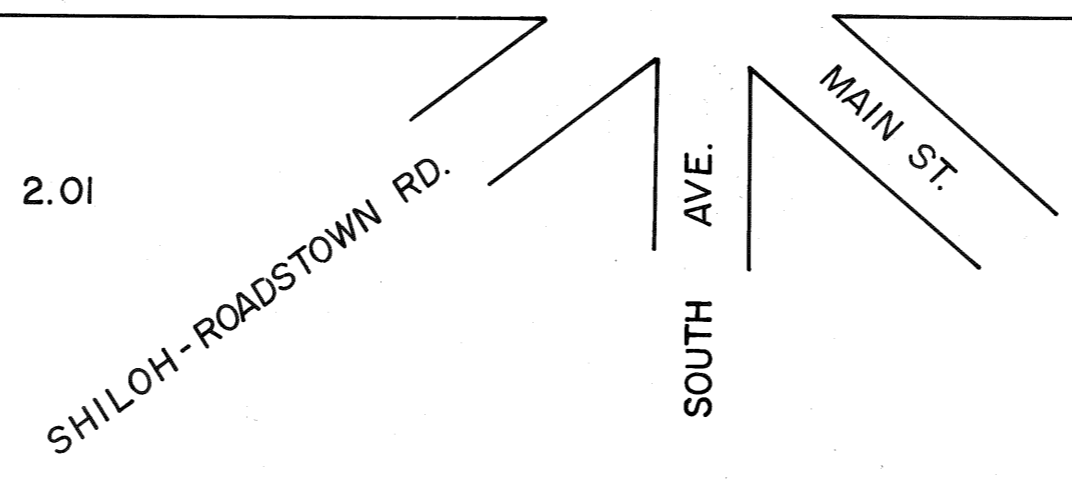
SEE SHEET I

SEE SHEET 4

SEE SHEET 2

SEE DETAIL SHEET 2.01

SEE DETAIL SHEET 2.01



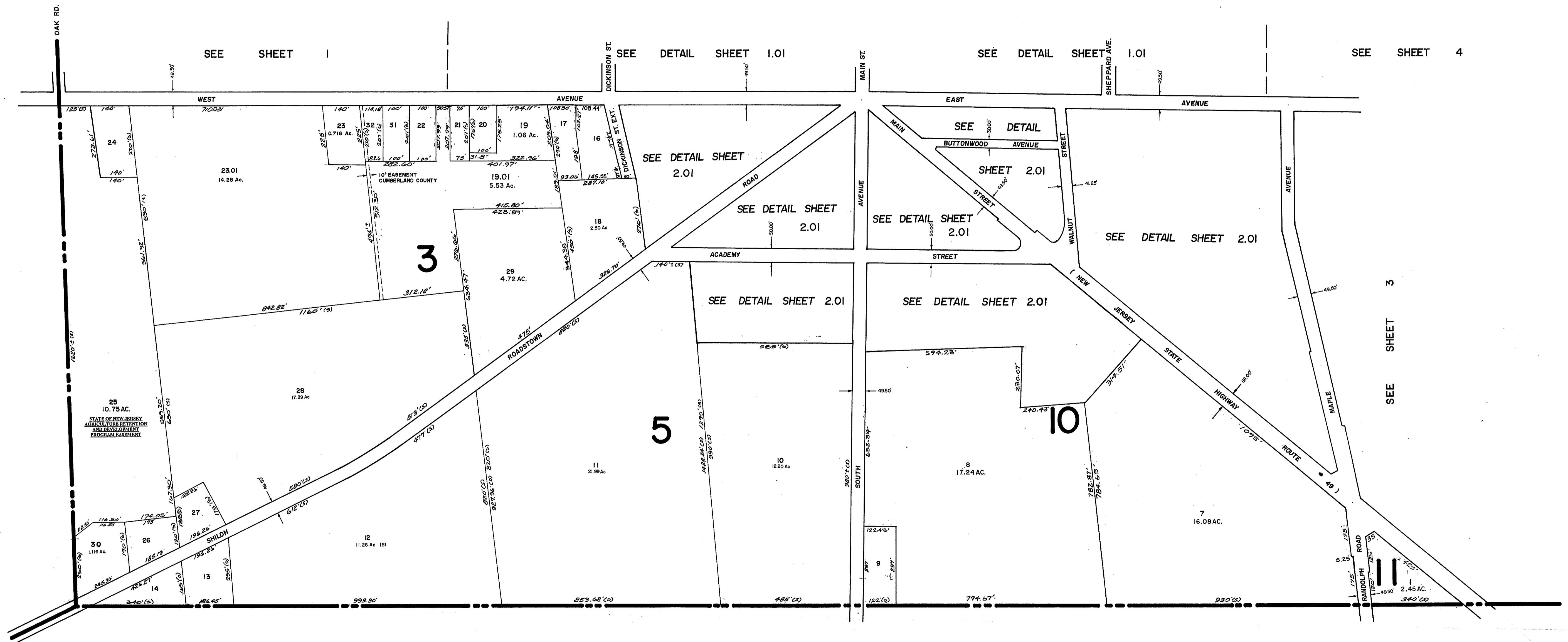
NEW JERSEY DEPARTMENT OF THE TREASURY
 DIVISION OF TAXATION
 PUBLIC UTILITY TAX BUREAU
 APPROVED AS A TAX MAP PURSUANT TO THE
 PROVISIONS OF CHAPTER 123, LAWS OF 1952, ETC.
 FOR THE DIRECTOR, DIVISION OF TAXATION.
 BY *[Signature]*
 DATE **DEC 23 1970** SERIAL No. **419**

TAX ASSESSMENT MAP
 BOROUGH OF SHILOH
 CUMBERLAND COUNTY N.J.
 SCALE: 1"=100'
 DECEMBER, 1970
 ALBERT A. FRALINGER JR., CONSULTING ENGINEER
 629 SHILOH PIKE, BRIDGETON, NEW JERSEY 08302

BLOCK 2, LOT 8 IS UNASSIGNED 5-22-2002



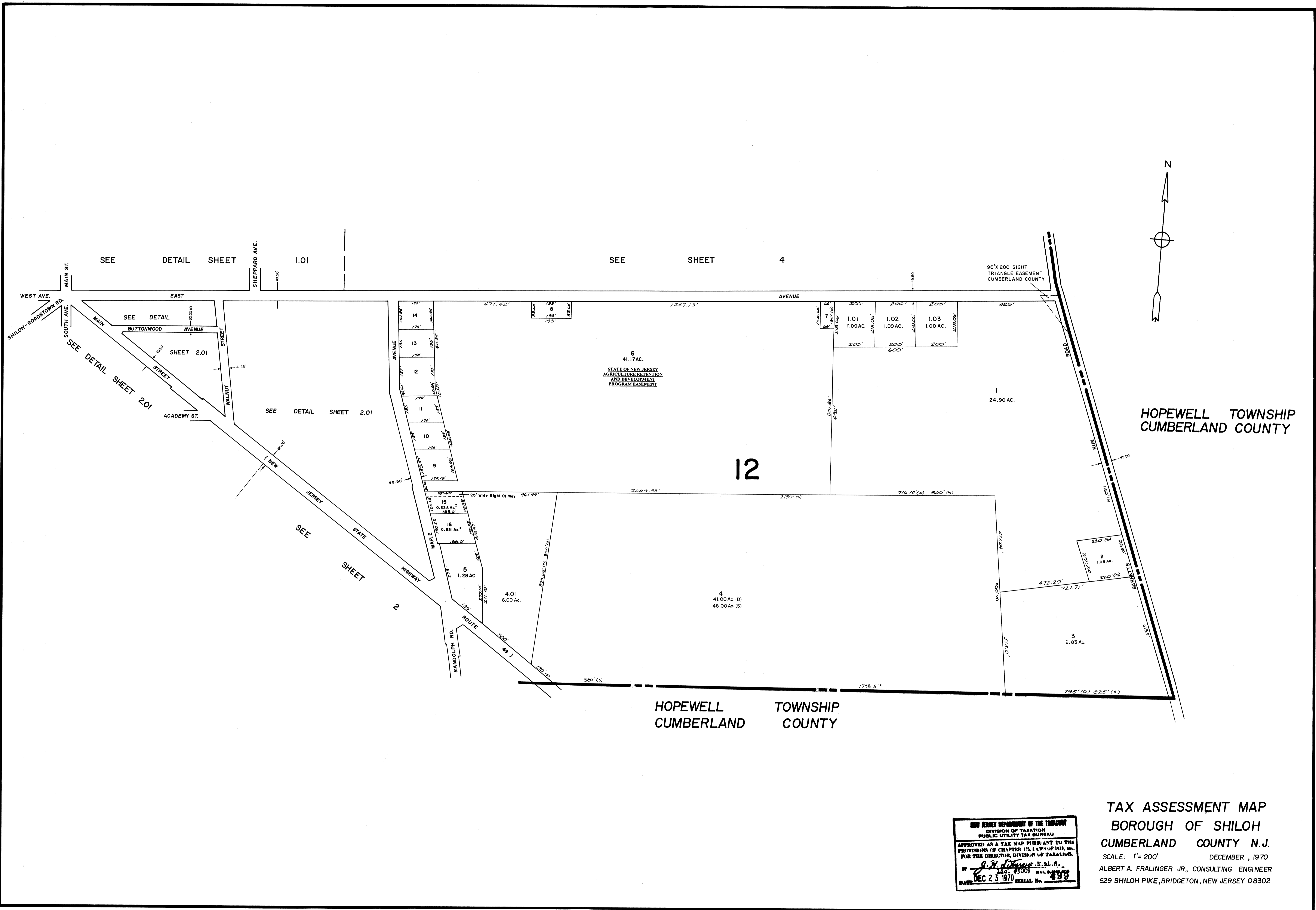
STOW CREEK TOWNSHIP
CUMBERLAND COUNTY



HOPEWELL TOWNSHIP
CUMBERLAND COUNTY

NEW JERSEY DEPARTMENT OF THE TREASURY
DIVISION OF TAXATION
PUBLIC UTILITY TAX BUREAU
APPROVED AS A TAX MAP PURSUANT TO THE
PROVISIONS OF CHAPTER 119, LAWS OF 1968,
FOR THE DIRECTOR, DIVISION OF TAXATION.
BY *[Signature]* E.E.L.B.
DEC 23 1970 SERIAL No. 499

TAX ASSESSMENT MAP
BOROUGH OF SHILOH
CUMBERLAND COUNTY N.J.
SCALE: 1"= 200' DECEMBER, 1970
ALBERT A. FRALINGER JR., CONSULTING ENGINEER
629 SHILOH PIKE, BRIDGETON, NEW JERSEY 08302

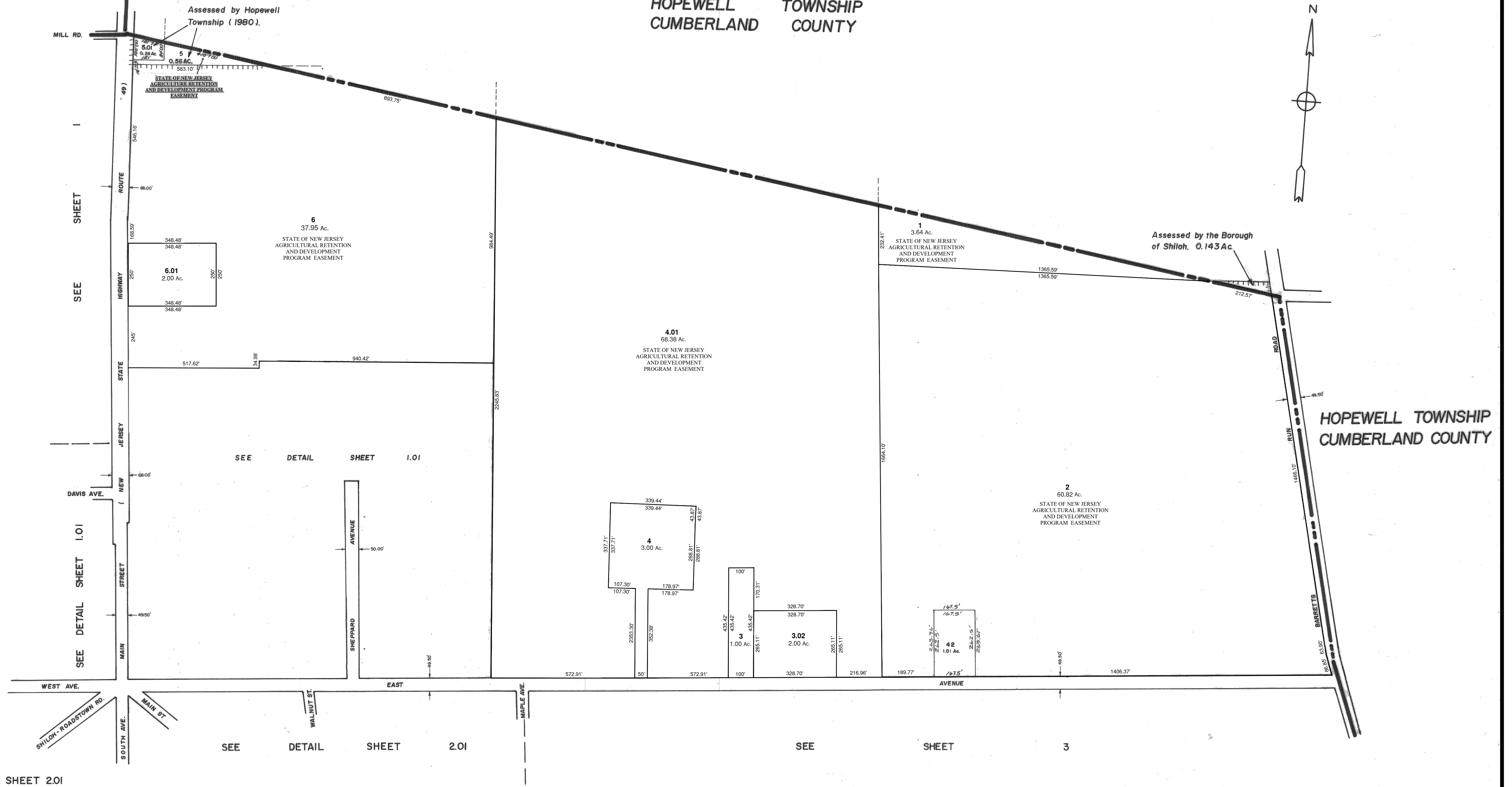


NEW JERSEY DEPARTMENT OF THE TREASURY
 DIVISION OF TAXATION
 PUBLIC UTILITY TAX BUREAU
 APPROVED AS A TAX MAP PURSUANT TO THE
 PROVISIONS OF CHAPTER 173, L.A.S. OF 1963, AND
 FOR THE DIRECTOR, DIVISION OF TAXATION.
 BY *[Signature]* P.E., S.E.
 L.C. #5009
 DATE DEC 23 1970 SERIAL No. 499

TAX ASSESSMENT MAP
 BOROUGH OF SHILOH
 CUMBERLAND COUNTY N.J.
 SCALE: 1" = 200'
 DECEMBER, 1970
 ALBERT A. FRALINGER JR., CONSULTING ENGINEER
 629 SHILOH PIKE, BRIDGETON, NEW JERSEY 08302

STOW CREEK TOWNSHIP
CUMBERLAND COUNTY

HOPEWELL TOWNSHIP
CUMBERLAND COUNTY



TAX ASSESSMENT MAP
BOROUGH OF SHILOH
CUMBERLAND COUNTY N.J.
 SCALE: 1" = 200'
 DECEMBER, 1970
 ALBERT A. FRALINGER JR., CONSULTING ENGINEER
 629 SHILOH PIKE, BRIDGETON, NEW JERSEY 08302

NEW JERSEY DEPARTMENT OF THE TREASURY
 DIVISION OF TAXATION
 PUBLIC UTILITY TAX BUREAU
 APPROVED AS A TAX MAP PURSUANT TO THE
 PROVISIONS OF CHAPTER 175, L.A.W. OF 1969, BY
 FOR THE DIRECTOR, DIVISION OF TAXATION.
 ALBERT A. FRALINGER JR., CONSULTING ENGINEER
 DATE: DEC 23 1970 SERIAL No. 498