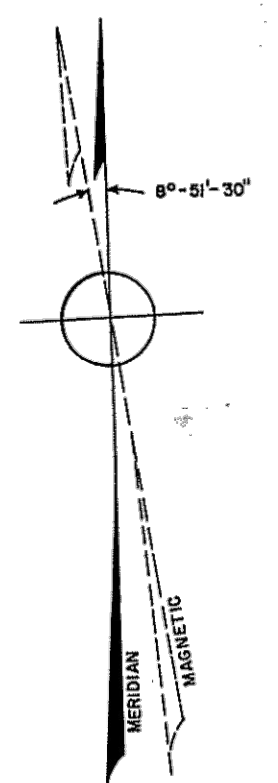


DATE:	REVISIONS BY:	LICENSE NO.:
DEC. 2000	ALBERT A. FRALINGER, JR.	12588
DEC. 2001	ALBERT A. FRALINGER, JR.	12588
DEC. 2002	ALBERT A. FRALINGER, JR.	12588
DEC. 2003	ALBERT A. FRALINGER, JR.	12588
DEC. 2004	JOHN M. FRALINGER	29350
DEC. 2005	JOHN M. FRALINGER	29350
DEC. 2006	JOHN M. FRALINGER	29350
DEC. 2007	JOHN M. FRALINGER	29350
DEC. 2008	JOHN M. FRALINGER	29350
DEC. 2009	BARRY S. JONES	27524
DEC. 2010	BARRY S. JONES	27524
DEC. 2011	BARRY S. JONES	27524
DEC. 2012	BARRY S. JONES	27524
MAR. 2013	BARRY S. JONES	27524
DEC. 2013	BARRY S. JONES	27524
DEC. 2014	BARRY S. JONES	27524
DEC. 2015	BARRY S. JONES	27524
DEC. 2016	BARRY S. JONES	27524
DEC. 2017	BARRY S. JONES	27524
DEC. 2018	GUY M. DEFABRITES	34843
DEC. 2019	GUY M. DEFABRITES	34843
DEC. 2020	GUY M. DEFABRITES	34843
DEC. 2021	GUY M. DEFABRITES	34843
DEC. 2022	GUY M. DEFABRITES	34843
DEC. 2023	GUY M. DEFABRITES	34843
DEC. 2025	GUY M. DEFABRITES	34843



LOWER
ALLOWAYS CREEK TOWNSHIP
SALEM COUNTY



DATE	REVISIONS BY:	LICENSE NO.
DEC. 1999	ALBERT A. FRALINGER, JR.	12588
DEC. 1998	ALBERT A. FRALINGER, JR.	12588
DEC. 1997	ALBERT A. FRALINGER, JR.	12588
DEC. 1996	ALBERT A. FRALINGER, JR.	12588
JAN. 1996	ALBERT A. FRALINGER JR.	12588
DEC. 1994	ALBERT A. FRALINGER, JR.	12588
DEC. 1993	ALBERT A. FRALINGER, JR.	12588
DEC. 1992	ALBERT A. FRALINGER, JR.	12588
DEC. 1991	ALBERT A. FRALINGER, JR.	12588
DEC. 1990	ALBERT A. FRALINGER, JR.	12588
DEC. 1989	ALBERT A. FRALINGER, JR.	12588
DEC. 1988	ALBERT A. FRALINGER, JR.	12588
DEC. 1987	ALBERT A. FRALINGER, JR.	12588
DEC. 1986	ALBERT A. FRALINGER, JR.	12588
DEC. 1985	ALBERT A. FRALINGER, JR.	12588
DEC. 1984	ALBERT A. FRALINGER, JR.	12588
DEC. 1983	ALBERT A. FRALINGER, JR.	12588
DEC. 1982	ALBERT A. FRALINGER, JR.	12588
DEC. 1981	ALBERT A. FRALINGER, JR.	12588
DEC. 1980	ALBERT A. FRALINGER, JR.	12588
DECEMBER 1979	ALBERT A. FRALINGER, JR.	12588
DECEMBER 1978	ALBERT A. FRALINGER, JR.	12588
DECEMBER 1977	ALBERT A. FRALINGER, JR.	12588
JUNE 1977	ALBERT A. FRALINGER, JR.	12588
DECEMBER 1976	Albert A. Fralinger Jr.	12588
SEPTEMBER 1975	Albert A. Fralinger Jr.	12588
NOVEMBER 1974	Albert A. Fralinger Jr.	12588
SEPTEMBER 1973	Albert A. Fralinger Jr.	12588
OCTOBER 1972	Albert A. Fralinger Jr.	12588
JULY 1972	Albert A. Fralinger Jr.	12588
MARCH 1972	Albert A. Fralinger Jr.	12588
SEPTEMBER 1971	Albert A. Fralinger Jr.	12588
AUGUST 1970	ALBERT A. FRALINGER JR.	12588

LEGEND
 ○ SHEET NUMBERS
 000 BLOCK NUMBERS
 --- SHEET LIMITS

" THE AREAS, BOUNDARIES AND DIMENSIONS SHOWN ON THIS TAX MAP ARE DERIVED FROM GROUND SURVEYS, AERIAL SURVEYS, AND RECORDED PLANS, MAPS, DEEDS, AND WILLS AND ARE TO BE USED FOR TAX ASSESSMENT PURPOSES ONLY "

" I HEREBY CERTIFY THAT THIS MAP AND THE SURVEY HAS BEEN MADE UNDER MY IMMEDIATE SUPERVISION, AND COMPLIES WITH THE LAWS OF THE STATE OF NEW JERSEY "

Albert A. Fralinger Jr.
 P.E. & L.S. NEW JERSEY LICENSE #12588

NEW JERSEY DEPARTMENT OF THE TREASURY
 DIVISION OF TAXATION
 PUBLIC UTILITY TAX BUREAU
 APPROVED AS A TAX MAP PURSUANT TO THE PROVISIONS OF CHAPTER 175, LAWS OF 1913, ETC. FOR THE DIRECTOR, DIVISION OF TAXATION
 BY: *[Signature]*
 DATE: MAR 30 1970 SERIAL NO. 483

I HEREBY CERTIFY THAT THIS MAP HAS BEEN REVISED UNDER MY IMMEDIATE SUPERVISION AND COMPLIES WITH THE LAWS OF THE STATE OF NEW JERSEY.
[Signature]
 GUY M. DEFABRITES, P.L.S. LIC. #34843 P.P. LIC. # 4688

I HEREBY CERTIFY THAT THIS MAP HAS BEEN REVISED UNDER MY IMMEDIATE SUPERVISION AND COMPLIES WITH THE LAWS OF THE STATE OF NEW JERSEY.
[Signature] 12/31/09
 BARRY S. JONES, P.L.S. LIC. #27524 P.P. LIC. # 4098

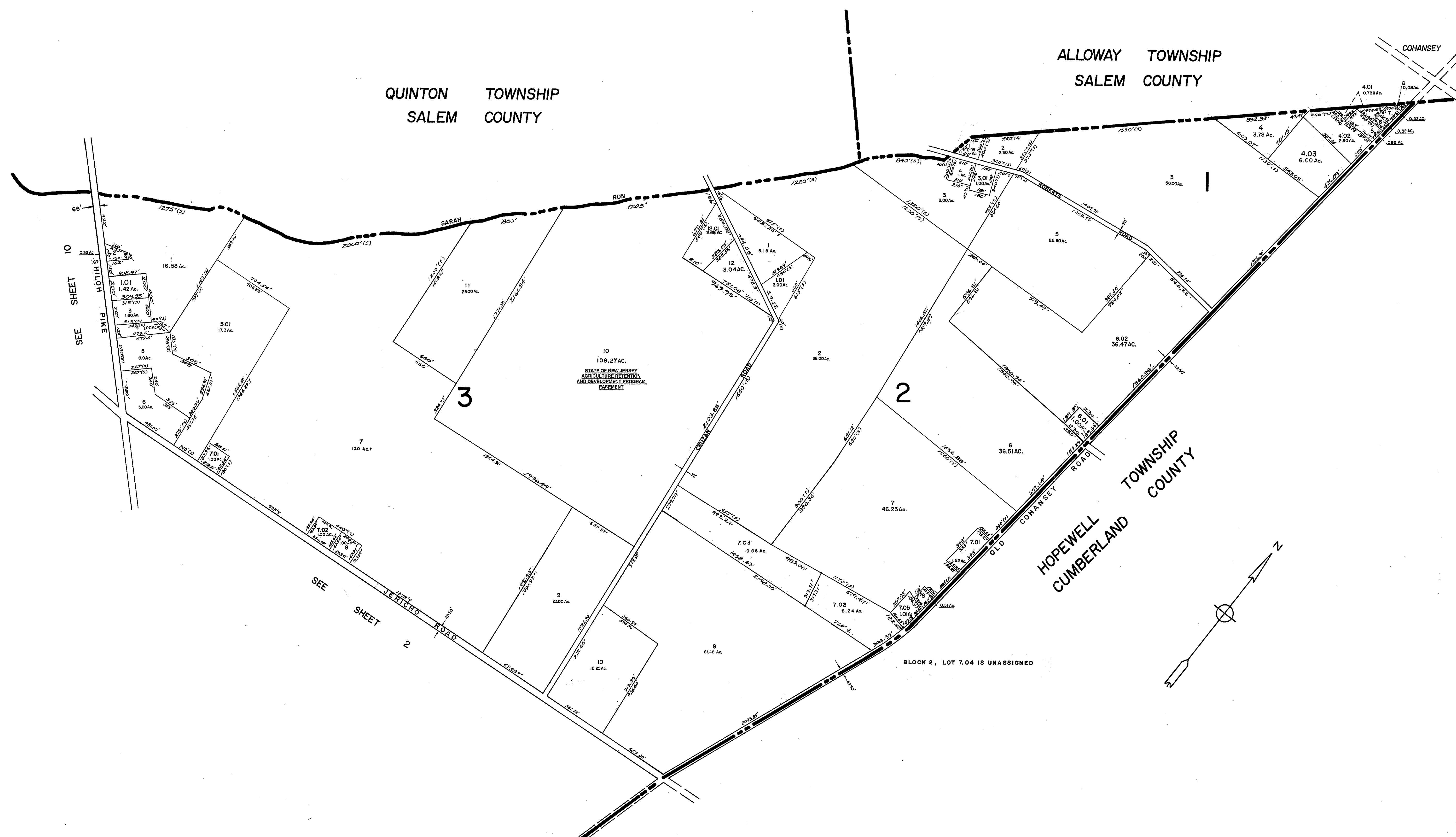
TAX ASSESSMENT MAP
STOW CREEK TOWNSHIP
CUMBERLAND COUNTY N.J.
 SCALE: 1"=2,000' FEBRUARY, 1970
 ALBERT A. FRALINGER JR., CONSULTING ENGINEER
 629 SHILOH PIKE, BRIDGETON, N. J. 08302

TO SHOW CONDITIONS AS OF DECEMBER 2025

QUINTON TOWNSHIP
SALEM COUNTY

ALLOWAY TOWNSHIP
SALEM COUNTY

HOPEWELL TOWNSHIP
CUMBERLAND COUNTY



SEE SHEET 10

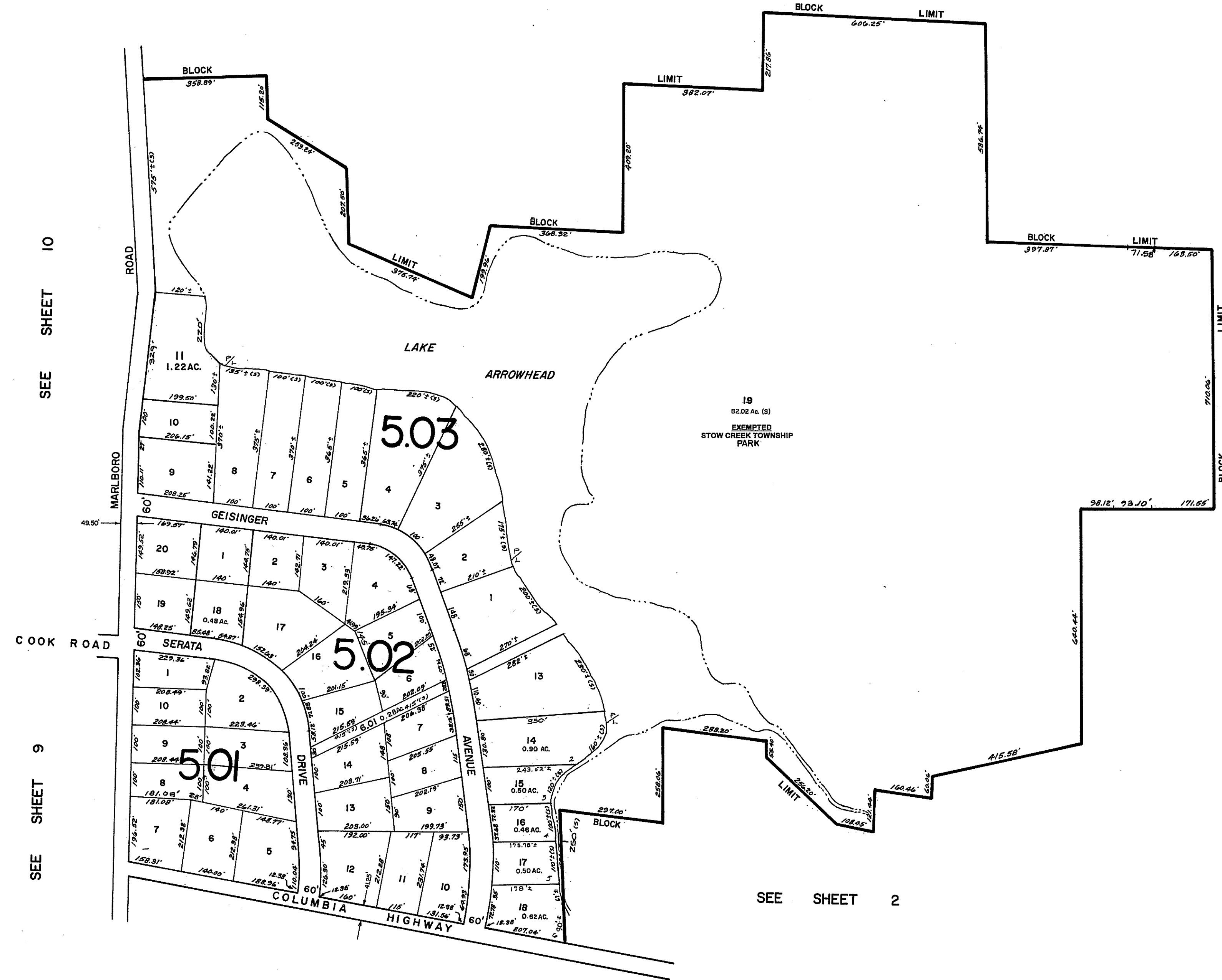
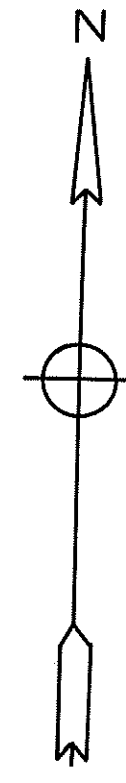
SEE SHEET 2

NEW JERSEY DEPARTMENT OF THE TREASURY
DIVISION OF TAXATION
PUBLIC UTILITY TAX BUREAU
APPROVED AS A TAX MAP PURSUANT TO THE
PROVISIONS OF CHAPTER 175 LAWS OF 1913 ETC
FOR THE DIVISION OF TAXATION
BY *A. A. Fralinger, Jr.* P.E., E.S.
DATE **MAR 30 1970** SERIAL NO. **483**

TAX ASSESSMENT MAP
STOW CREEK TOWNSHIP
CUMBERLAND COUNTY N.J.

SCALE: 1" = 400'
FEBRUARY, 1970
ALBERT A. FRALINGER JR., CONSULTING ENGINEER
629 SHILOH PIKE, BRIDGETON, N. J. 08302

SEE SHEET 2



SEE SHEET 10

SEE SHEET 9

SEE SHEET 3

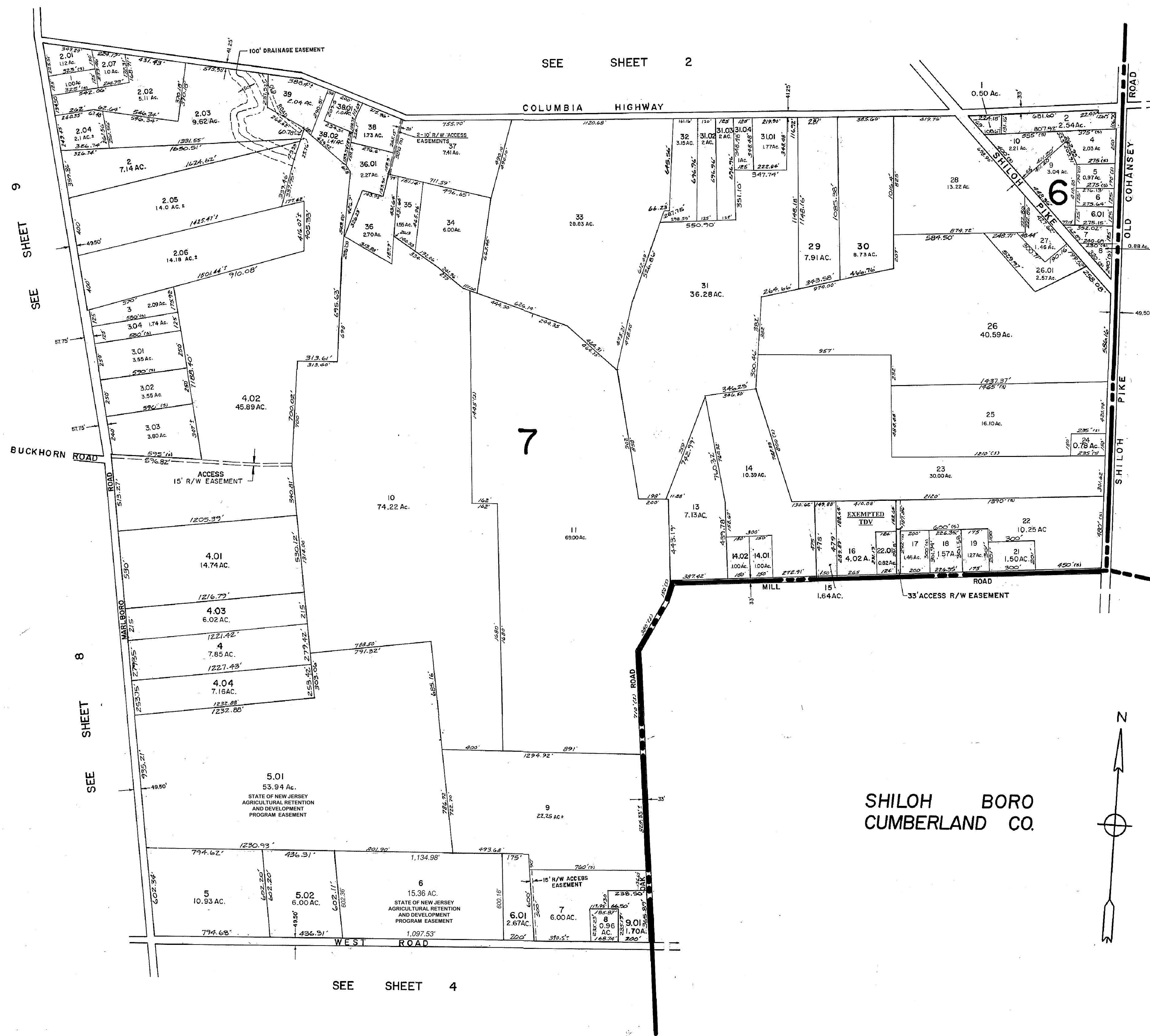
SEE SHEET 2

SEE SHEET 2

MILL CREEK FARMS

NEW JERSEY DEPARTMENT OF THE TREASURY
 DIVISION OF TAXATION
 LOCAL PROPERTY AND PUBLIC UTILITY BRANCH
 APPROVED AS A TAX MAP PURSUANT TO THE
 PROVISIONS OF CHAPTER 175, LAWS OF 1913, ETC.
 FOR THE DIRECTOR, DIVISION OF TAXATION
J. H. DeVore
 BY: _____ P.E. & L.S. CHIEF
 DATE: MAR 15 1978 SERIAL NO. 483

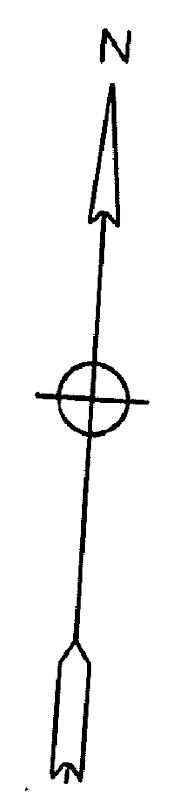
TAX ASSESSMENT MAP
 STOW CREEK TOWNSHIP
 CUMBERLAND COUNTY N.J.
 SCALE: 1" = 200' SEPTEMBER, 1971
 ALBERT A. FRALINGER JR., CONSULTING ENGINEER
 629 SHILOH PIKE, BRIDGETON, N. J. 08302



NOTE: BLOCK 6 LOT 3 IS UNASSIGNED
BLOCK 7 LOT 20 UNASSIGNED

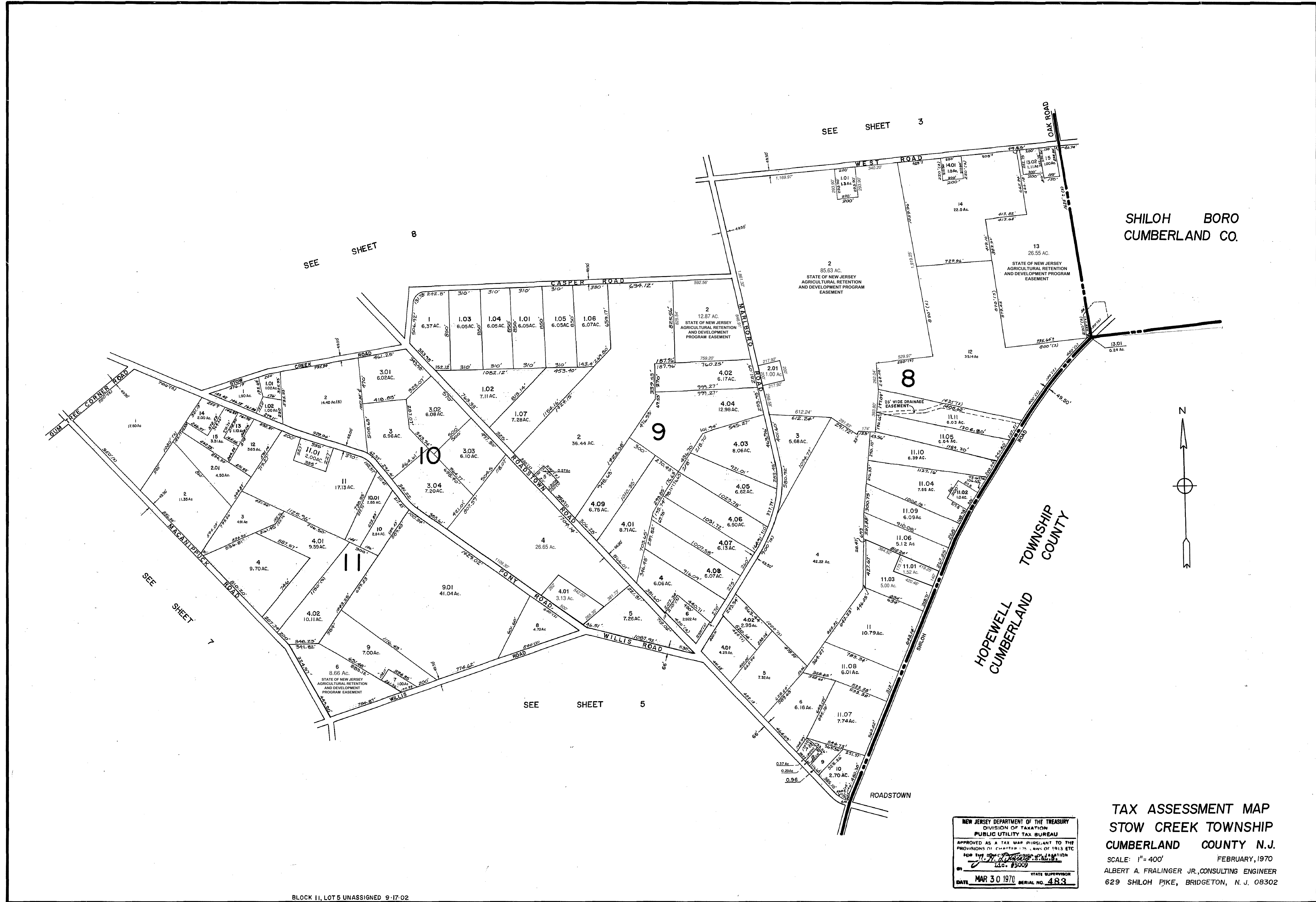
HOPEWELL TOWNSHIP
CUMBERLAND COUNTY

SHILOH BORO
CUMBERLAND CO.



NEW JERSEY DEPARTMENT OF THE TREASURY
DIVISION OF TAXATION
PUBLIC UTILITY TAX BUREAU
APPROVED AS A TAX MAP PURSUANT TO THE
PROVISIONS OF CHAPTER 125 LAWS OF 1913 ETC
FOR THE PURPOSE OF PUBLIC UTILITY TAXATION
DATE MAR 30 1970 STATE SUPERVISOR
SERIAL NO. 483

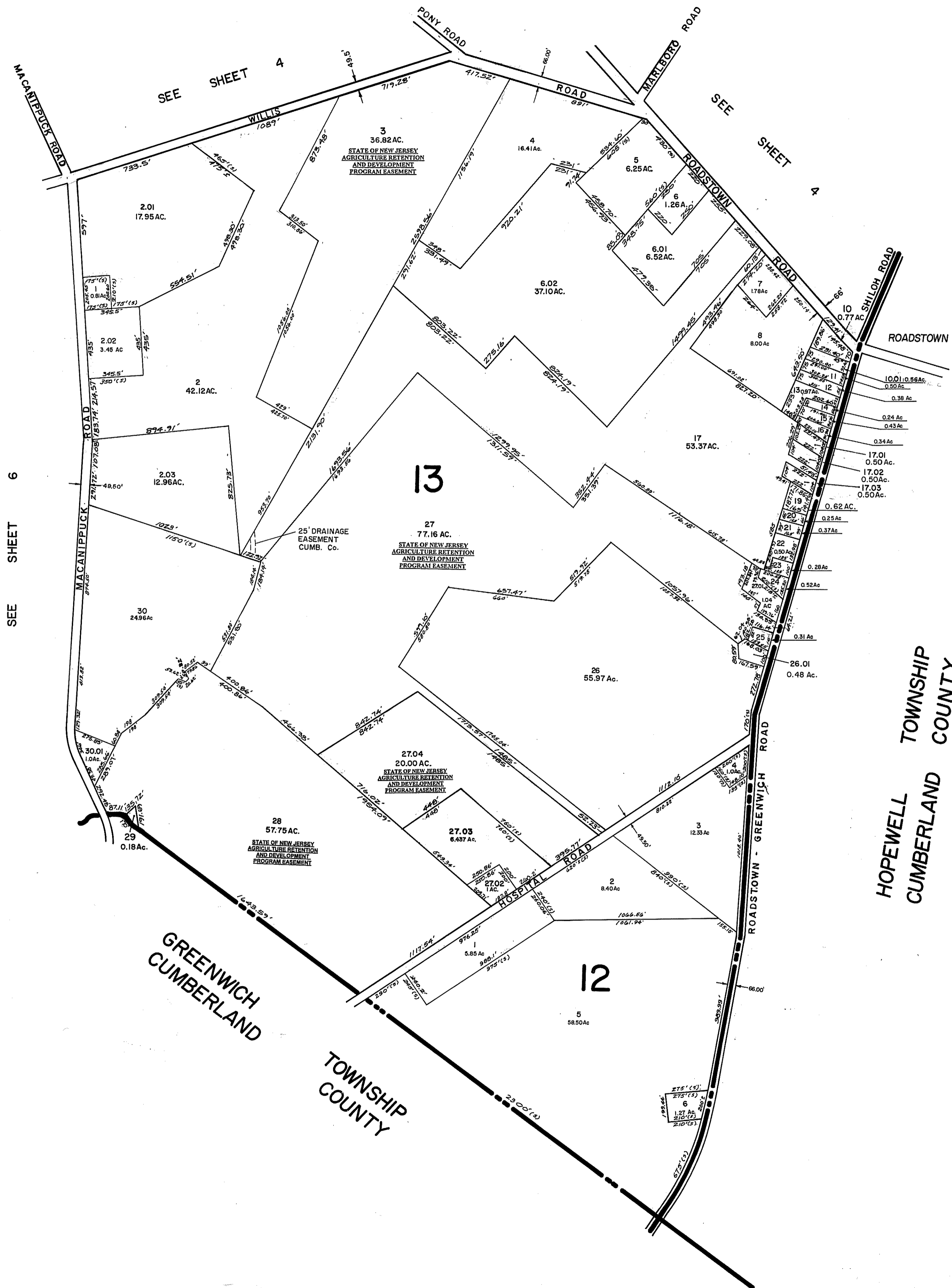
TAX ASSESSMENT MAP
STOW CREEK TOWNSHIP
CUMBERLAND COUNTY N.J.
SCALE: 1" = 400' FEBRUARY, 1970
ALBERT A. FRALINGER JR., CONSULTING ENGINEER
629 SHILOH PIKE, BRIDGETON, N. J. 08302



BLOCK 11, LOTS UNASSIGNED 9-17-02

NEW JERSEY DEPARTMENT OF THE TREASURY
 DIVISION OF TAXATION
 PUBLIC UTILITY TAX BUREAU
 APPROVED AS A TAX MAP PURSUANT TO THE
 PROVISIONS OF CHAPTER 175, ACT OF 1913, ETC.
 BY THE COMMISSIONER OF TAXATION
 LIC. #5009
 STATE SUPERVISOR
 DATE MAR 30 1970 SERIAL NO. 483

TAX ASSESSMENT MAP
 STOW CREEK TOWNSHIP
 CUMBERLAND COUNTY N.J.
 SCALE: 1" = 400' FEBRUARY, 1970
 ALBERT A. FRALINGER JR., CONSULTING ENGINEER
 629 SHILOH PIKE, BRIDGETON, N. J. 08302



SEE SHEET 4
SEE SHEET 6

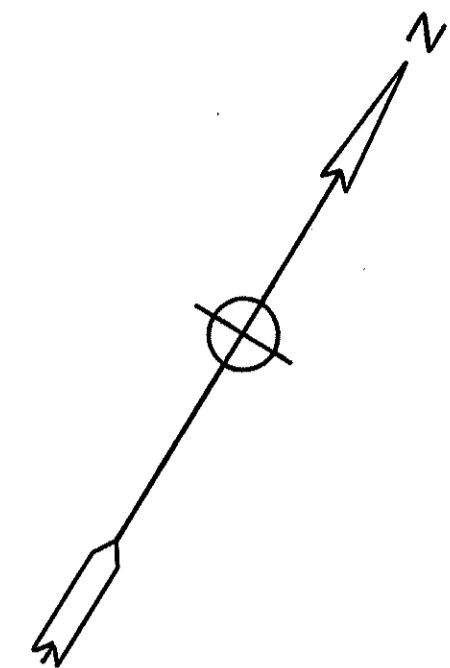
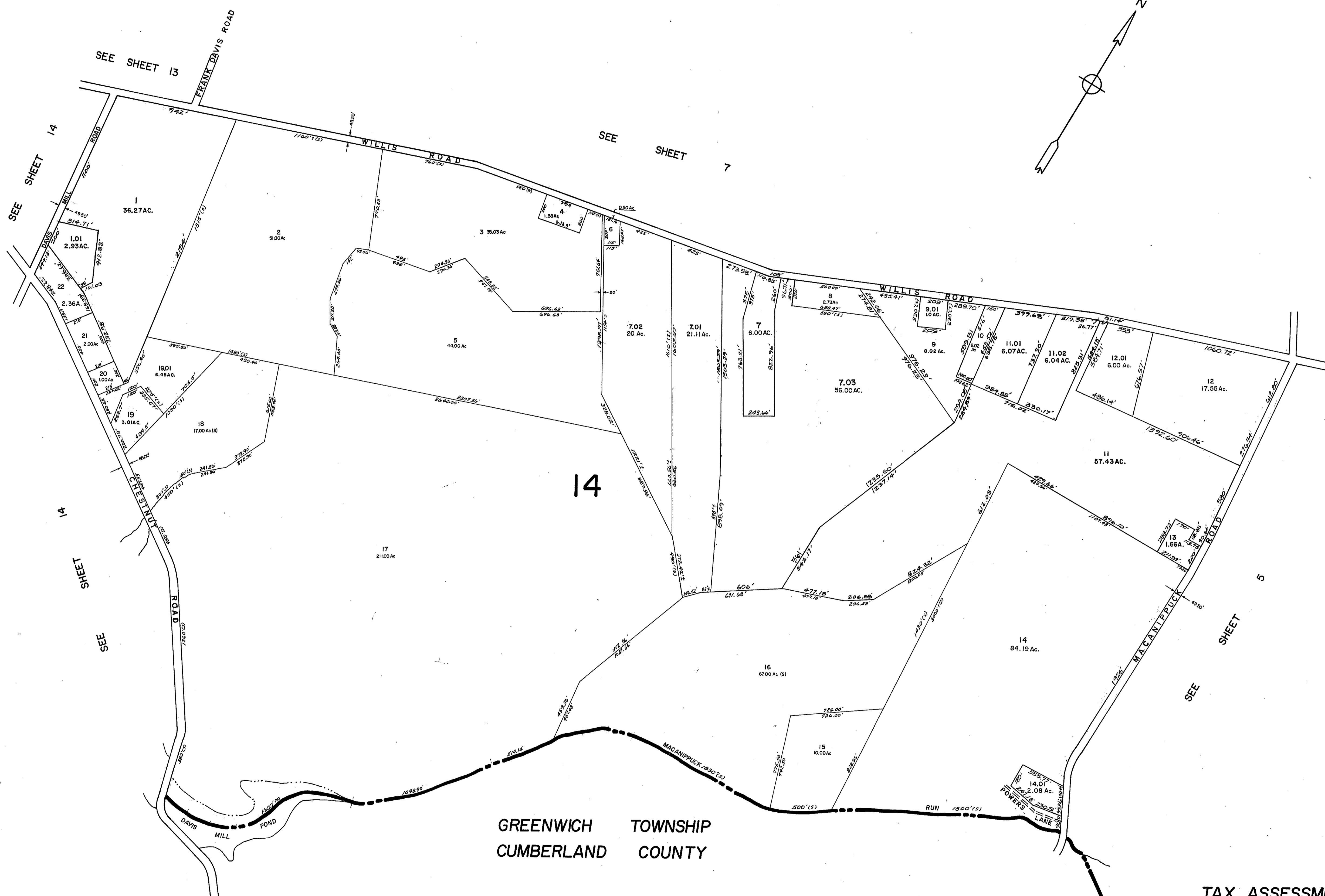
SEE SHEET 4

BLOCK 13, LOT 9 IS UNASSIGNED
BLOCK 13, LOT 18 IS UNASSIGNED



NEW JERSEY DEPARTMENT OF THE TREASURY
DIVISION OF TAXATION
PUBLIC UTILITY TAX BUREAU
APPROVED AS A TAX MAP PURSUANT TO THE PROVISIONS OF CHAPTER 175 LAWS OF 1913, ETC.
FOR THE DIRECTOR, DIVISION OF TAXATION
J. H. O'Connell, S.E.S.
DATE MAR 30 1970 STATE SUPERVISOR SERIAL NO. 483

TAX ASSESSMENT MAP
STOW CREEK TOWNSHIP
CUMBERLAND COUNTY N.J.
SCALE: 1" = 400' FEBRUARY, 1970
ALBERT A. FRALINGER JR., CONSULTING ENGINEER
629 SHILOH PIKE, BRIDGETON, N. J. 08302



GREENWICH TOWNSHIP
CUMBERLAND COUNTY

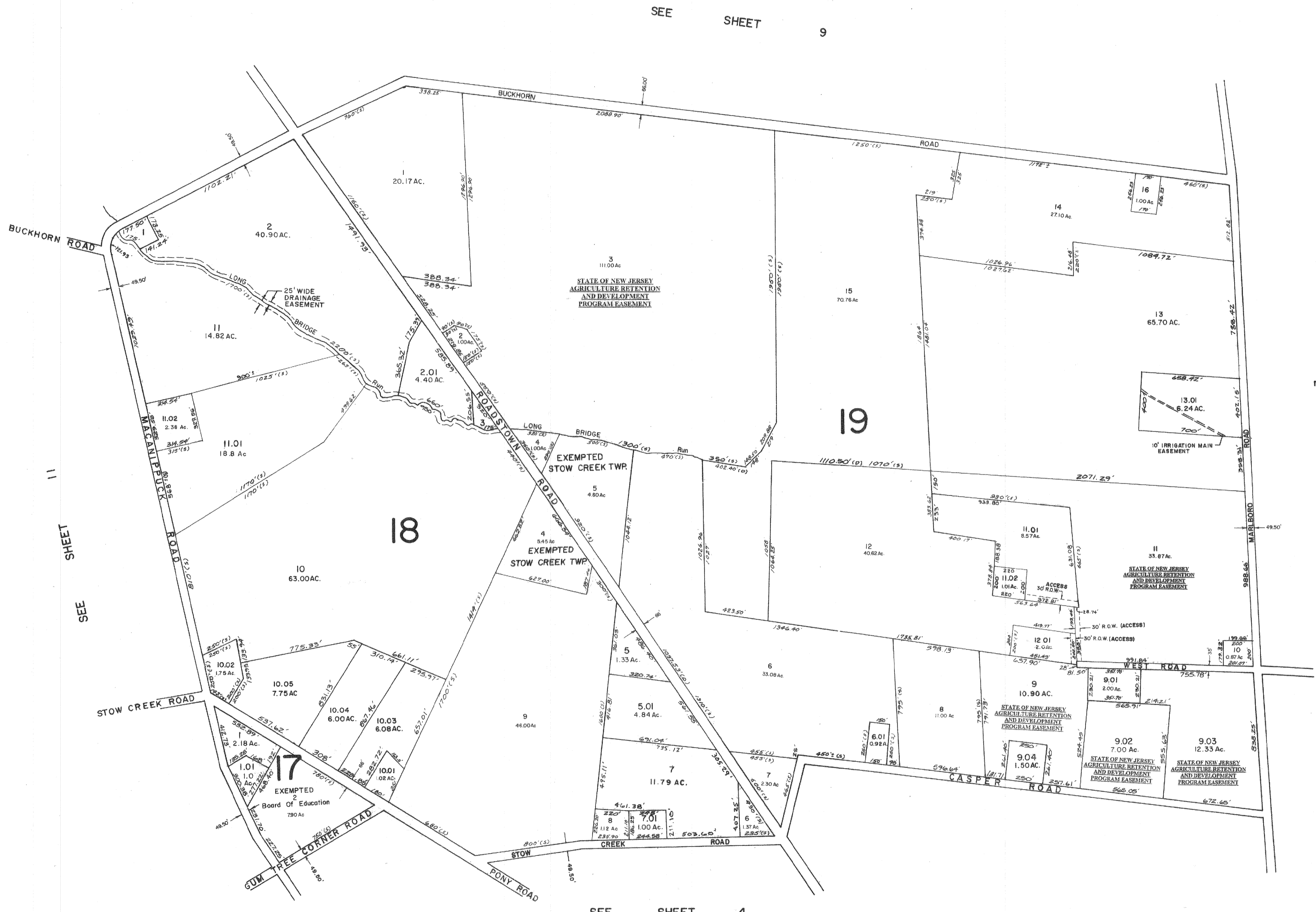
NEW JERSEY DEPARTMENT OF THE TREASURY
DIVISION OF TAXATION
PUBLIC UTILITY TAX BUREAU
APPROVED AS A TAX MAP PURSUANT TO THE
PROVISIONS OF CHAPTER 175, LAWS OF 1913, ETC.
FOR THE DIVISION OF TAXATION
J. H. ...
L.C. #5009
DATE MAR 30 1970 STATE SUPERVISOR
SERIAL NO. 483

TAX ASSESSMENT MAP
STOW CREEK TOWNSHIP
CUMBERLAND COUNTY N.J.
SCALE 1" = 400' FEBRUARY, 1970
ALBERT A. FRALINGER JR., CONSULTING ENGINEER
629 SHILOH PIKE, BRIDGETON, N. J. 08302



NEW JERSEY DEPARTMENT OF THE TREASURY
 DIVISION OF TAXATION
 PUBLIC UTILITY TAX BUREAU
 APPROVED AS A TAX MAP PURSUANT TO THE
 PROVISIONS OF CHAPTER 175 LAWS OF 1913, ETC
 FOR THE DIRECTOR, DIVISION OF TAXATION
(Signature)
 Lic. #5009
 DATE MAR 30 1970 STATE SUPERVISOR
 SERIAL NO. 483

TAX ASSESSMENT MAP
 STOW CREEK TOWNSHIP
 CUMBERLAND COUNTY N.J.
 SCALE 1"=400' FEBRUARY, 1970
 ALBERT A. FRALINGER JR., CONSULTING ENGINEER
 629 SHILOH PIKE, BRIDGETON, N.J. 08302



SEE SHEET 9

SEE SHEET 11

SEE SHEET 3

SEE SHEET 4

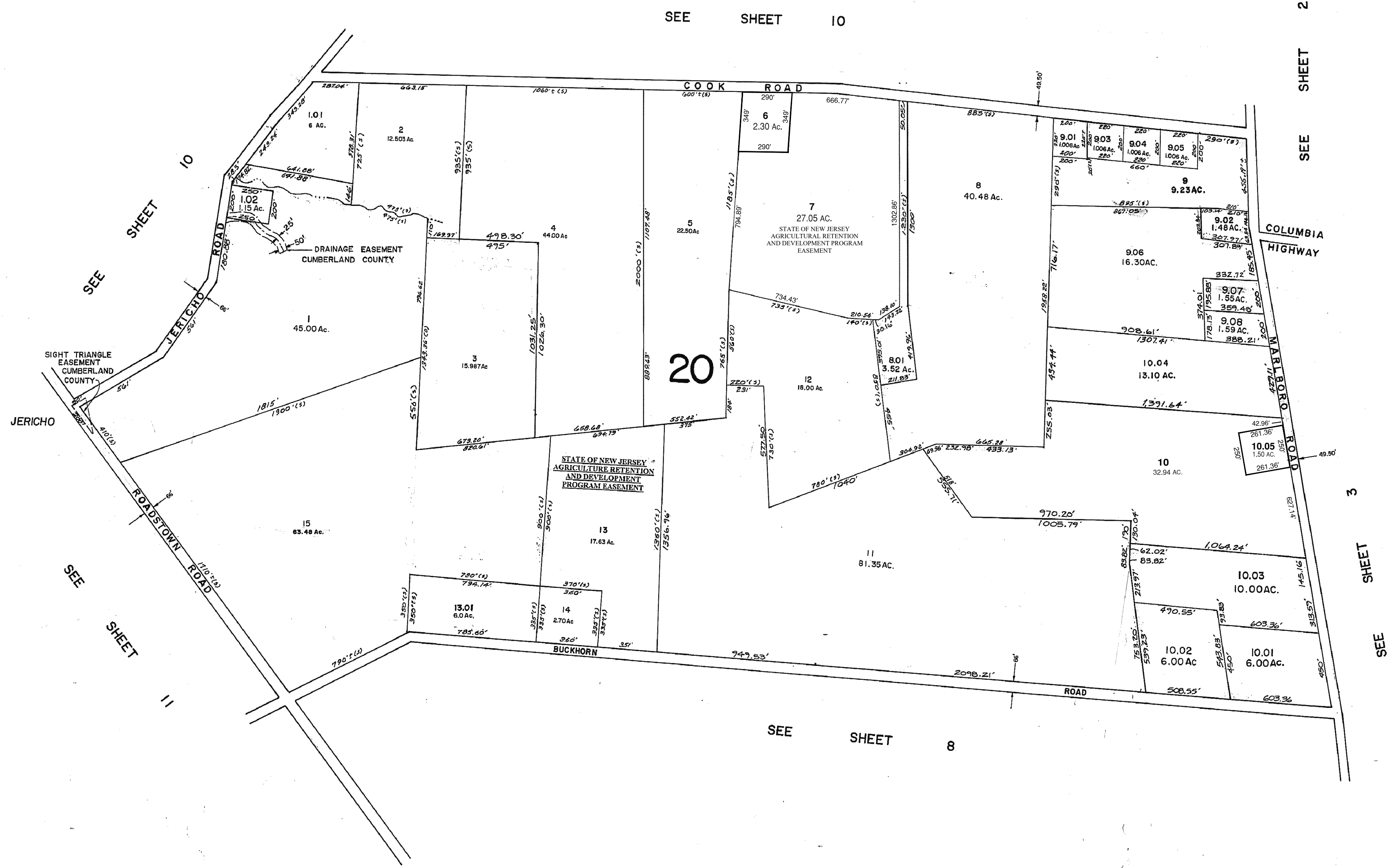
NEW JERSEY DEPARTMENT OF THE TREASURY
 DIVISION OF TAXATION
 PUBLIC UTILITY TAX BUREAU

APPROVED AS A TAX MAP PURSUANT TO THE PROVISIONS OF CHAPTER 115, LAWS OF 1913, ETC. FOR THE COUNTY DIVISION OF TAXATION

[Signature]
 STATE SUPERVISOR

DATE **MAR 30 1970** SERIAL NO. **483**

TAX ASSESSMENT MAP
STOW CREEK TOWNSHIP
CUMBERLAND COUNTY N.J.
 SCALE 1"=400' FEBRUARY, 1970
 ALBERT A. FRALINGER JR., CONSULTING ENGINEER
 629 SHILOH PIKE, BRIDGETON, N.J. 08302



SEE SHEET 10

SEE SHEET 2

SEE SHEET 10

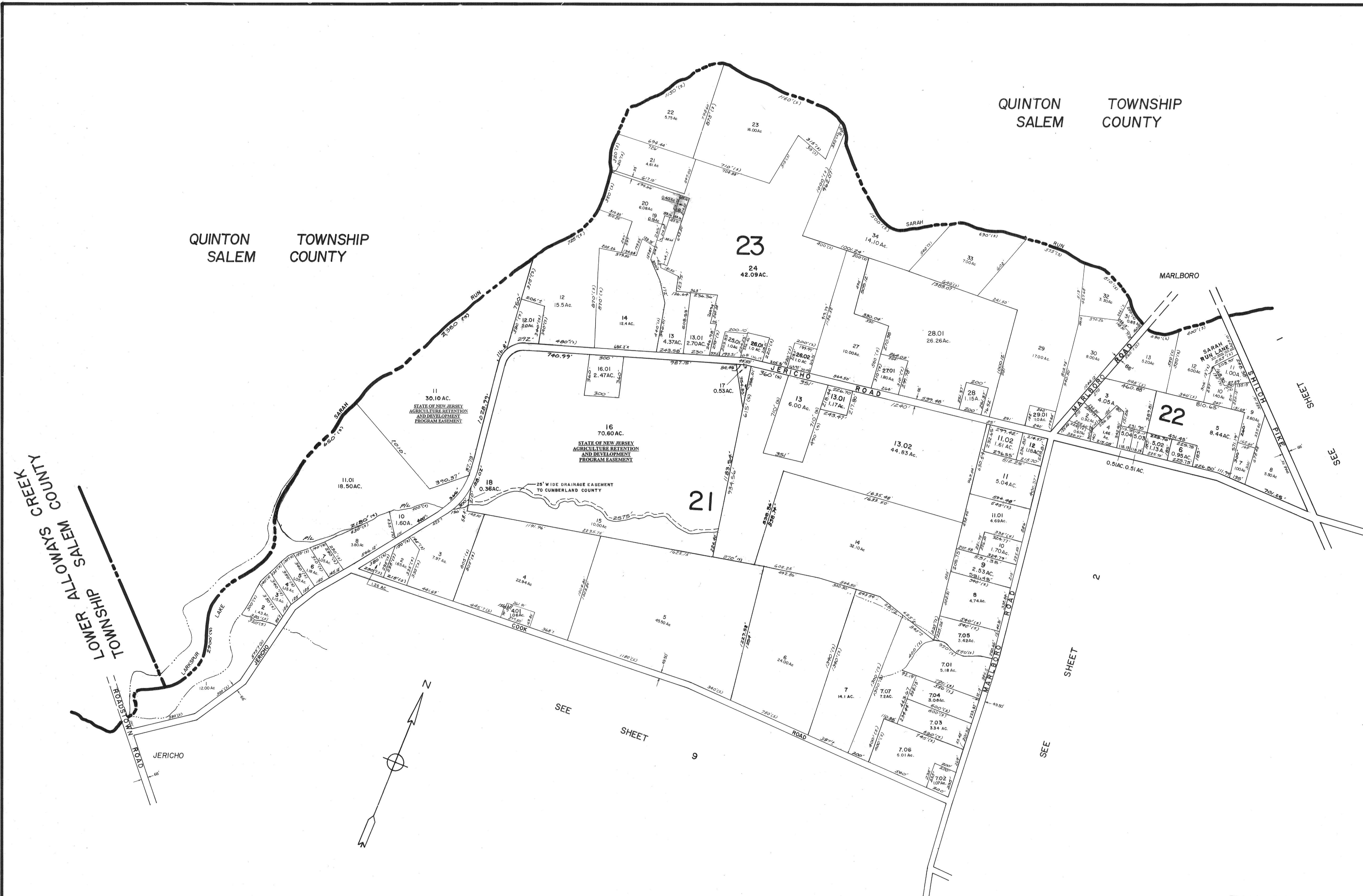
SEE SHEET 11

SEE SHEET 8

SEE SHEET 3

NEW JERSEY DEPARTMENT OF THE TREASURY
 DIVISION OF TAXATION
 PUBLIC UTILITY TAX BUREAU
 APPROVED AS A TAX MAP PURSUANT TO THE
 PROVISIONS OF CHAPTER 175, LAWS OF 1919, ETC.
 FOR THE DIRECTOR, DIVISION OF TAXATION
A. J. [Signature], S. E. L. S.
 11 G. #5000
 DATE: MAR 30 1970 STATE SUPERVISOR SERIAL NO. 483

TAX ASSESSMENT MAP
 STOW CREEK TOWNSHIP
 CUMBERLAND COUNTY N.J.
 SCALE 1" = 400' FEBRUARY, 1970
 ALBERT A. FRALINGER JR., CONSULTING ENGINEER
 629 SHILOH PIKE, BRIDGETON, N. J. 08302



QUINTON SALEM TOWNSHIP COUNTY

QUINTON SALEM TOWNSHIP COUNTY

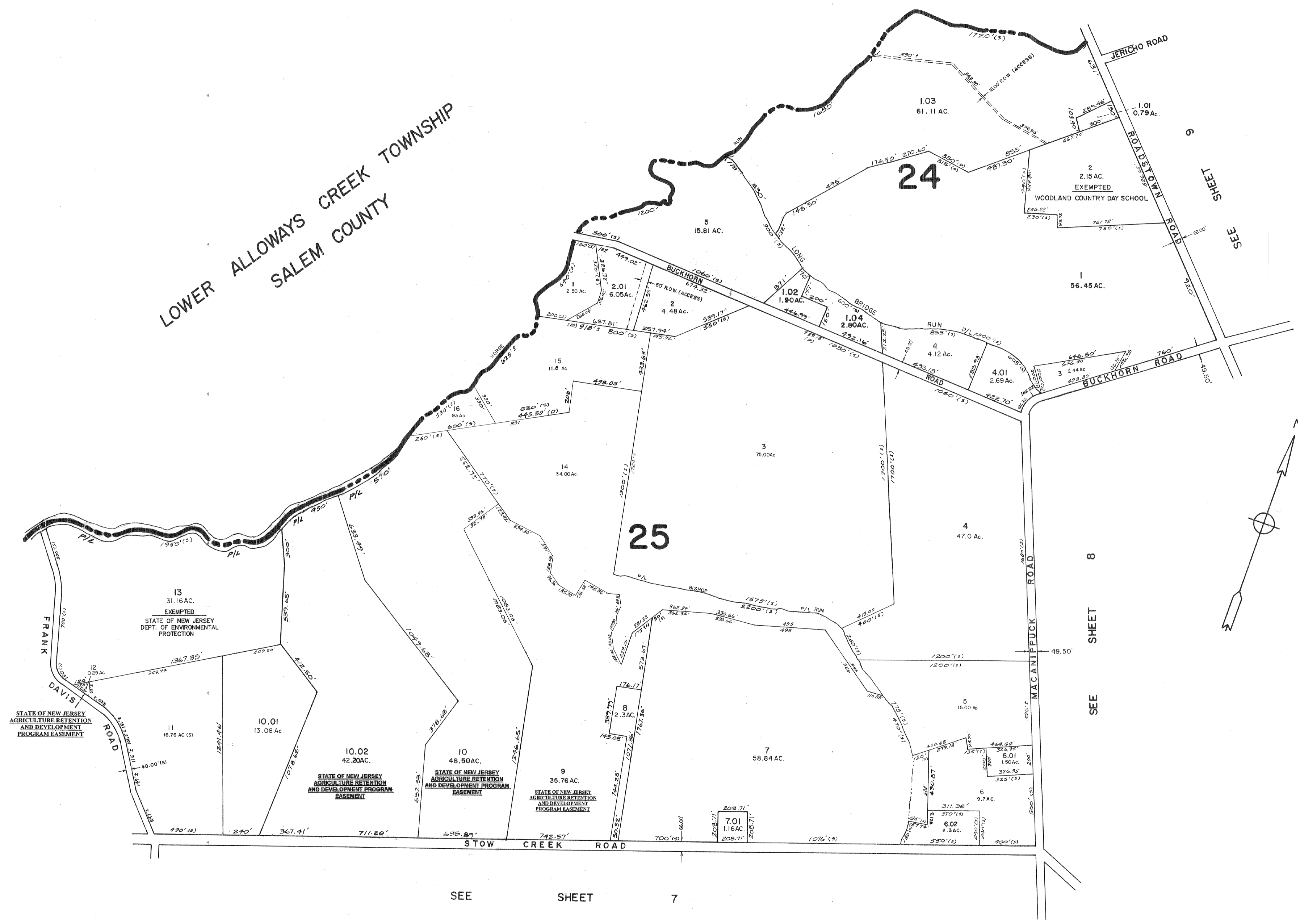
LOWER ALLWAYS CREEK TOWNSHIP SALEM COUNTY

NEW JERSEY DEPARTMENT OF THE TREASURY
 DIVISION OF TAXATION
 PUBLIC UTILITY TAX BUREAU
 APPROVED AS A TAX MAP PURSUANT TO THE PROVISIONS OF CHAPTER 175, LAWS OF 1913, ETC.
 FOR THE DIVISION OF TAXATION
 BY: *[Signature]* E.R.S.
 DATE: MAR 30 1970 SERIAL NO. 483

TAX ASSESSMENT MAP
 STOW CREEK TOWNSHIP
 CUMBERLAND COUNTY N.J.
 SCALE 1"=400' FEBRUARY, 1970
 ALBERT A. FRALINGER JR., CONSULTING ENGINEER
 629 SHILOH PIKE, BRIDGETON, N. J. 08302

LOWER ALLOWAYS CREEK TOWNSHIP
SALEM COUNTY

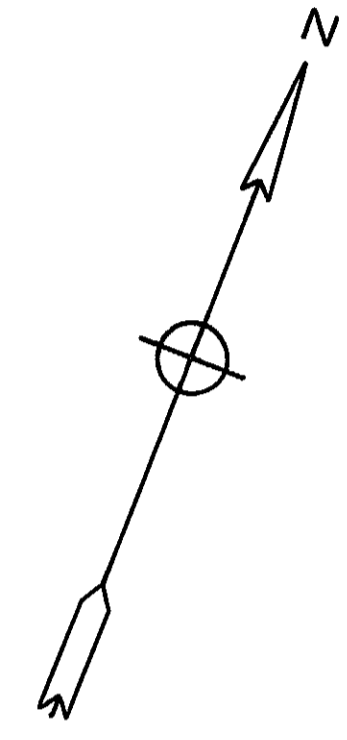
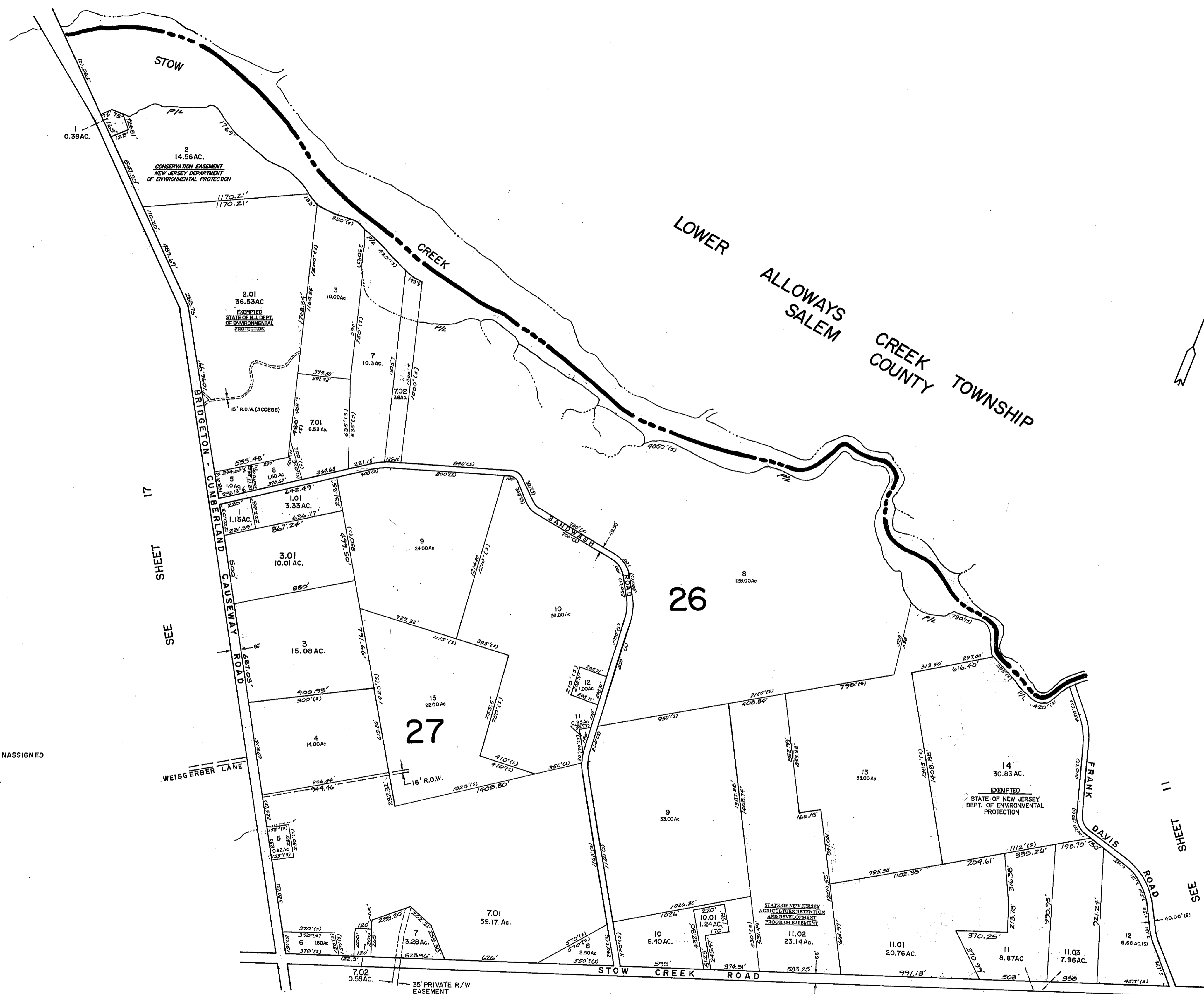
SEE SHEET 12



SEE SHEET 7

SEE SHEET 8

NEW JERSEY DEPARTMENT OF THE TREASURY
DIVISION OF TAXATION
PUBLIC UTILITY TAX BUREAU
APPROVED AS A TAX MAP PURSUANT TO THE
PROVISIONS OF PARAGRAPHS 175, 176, 177, 178, 179, 180, 181, 182, 183, 184, 185, 186, 187, 188, 189, 190, 191, 192, 193, 194, 195, 196, 197, 198, 199, 200, 201, 202, 203, 204, 205, 206, 207, 208, 209, 210, 211, 212, 213, 214, 215, 216, 217, 218, 219, 220, 221, 222, 223, 224, 225, 226, 227, 228, 229, 230, 231, 232, 233, 234, 235, 236, 237, 238, 239, 240, 241, 242, 243, 244, 245, 246, 247, 248, 249, 250, 251, 252, 253, 254, 255, 256, 257, 258, 259, 260, 261, 262, 263, 264, 265, 266, 267, 268, 269, 270, 271, 272, 273, 274, 275, 276, 277, 278, 279, 280, 281, 282, 283, 284, 285, 286, 287, 288, 289, 290, 291, 292, 293, 294, 295, 296, 297, 298, 299, 300, 301, 302, 303, 304, 305, 306, 307, 308, 309, 310, 311, 312, 313, 314, 315, 316, 317, 318, 319, 320, 321, 322, 323, 324, 325, 326, 327, 328, 329, 330, 331, 332, 333, 334, 335, 336, 337, 338, 339, 340, 341, 342, 343, 344, 345, 346, 347, 348, 349, 350, 351, 352, 353, 354, 355, 356, 357, 358, 359, 360, 361, 362, 363, 364, 365, 366, 367, 368, 369, 370, 371, 372, 373, 374, 375, 376, 377, 378, 379, 380, 381, 382, 383, 384, 385, 386, 387, 388, 389, 390, 391, 392, 393, 394, 395, 396, 397, 398, 399, 400, 401, 402, 403, 404, 405, 406, 407, 408, 409, 410, 411, 412, 413, 414, 415, 416, 417, 418, 419, 420, 421, 422, 423, 424, 425, 426, 427, 428, 429, 430, 431, 432, 433, 434, 435, 436, 437, 438, 439, 440, 441, 442, 443, 444, 445, 446, 447, 448, 449, 450, 451, 452, 453, 454, 455, 456, 457, 458, 459, 460, 461, 462, 463, 464, 465, 466, 467, 468, 469, 470, 471, 472, 473, 474, 475, 476, 477, 478, 479, 480, 481, 482, 483, 484, 485, 486, 487, 488, 489, 490, 491, 492, 493, 494, 495, 496, 497, 498, 499, 500, 501, 502, 503, 504, 505, 506, 507, 508, 509, 510, 511, 512, 513, 514, 515, 516, 517, 518, 519, 520, 521, 522, 523, 524, 525, 526, 527, 528, 529, 530, 531, 532, 533, 534, 535, 536, 537, 538, 539, 540, 541, 542, 543, 544, 545, 546, 547, 548, 549, 550, 551, 552, 553, 554, 555, 556, 557, 558, 559, 560, 561, 562, 563, 564, 565, 566, 567, 568, 569, 570, 571, 572, 573, 574, 575, 576, 577, 578, 579, 580, 581, 582, 583, 584, 585, 586, 587, 588, 589, 590, 591, 592, 593, 594, 595, 596, 597, 598, 599, 600, 601, 602, 603, 604, 605, 606, 607, 608, 609, 610, 611, 612, 613, 614, 615, 616, 617, 618, 619, 620, 621, 622, 623, 624, 625, 626, 627, 628, 629, 630, 631, 632, 633, 634, 635, 636, 637, 638, 639, 640, 641, 642, 643, 644, 645, 646, 647, 648, 649, 650, 651, 652, 653, 654, 655, 656, 657, 658, 659, 660, 661, 662, 663, 664, 665, 666, 667, 668, 669, 670, 671, 672, 673, 674, 675, 676, 677, 678, 679, 680, 681, 682, 683, 684, 685, 686, 687, 688, 689, 690, 691, 692, 693, 694, 695, 696, 697, 698, 699, 700, 701, 702, 703, 704, 705, 706, 707, 708, 709, 710, 711, 712, 713, 714, 715, 716, 717, 718, 719, 720, 721, 722, 723, 724, 725, 726, 727, 728, 729, 730, 731, 732, 733, 734, 735, 736, 737, 738, 739, 740, 741, 742, 743, 744, 745, 746, 747, 748, 749, 750, 751, 752, 753, 754, 755, 756, 757, 758, 759, 760, 761, 762, 763, 764, 765, 766, 767, 768, 769, 770, 771, 772, 773, 774, 775, 776, 777, 778, 779, 780, 781, 782, 783, 784, 785, 786, 787, 788, 789, 790, 791, 792, 793, 794, 795, 796, 797, 798, 799, 800, 801, 802, 803, 804, 805, 806, 807, 808, 809, 810, 811, 812, 813, 814, 815, 816, 817, 818, 819, 820, 821, 822, 823, 824, 825, 826, 827, 828, 829, 830, 831, 832, 833, 834, 835, 836, 837, 838, 839, 840, 841, 842, 843, 844, 845, 846, 847, 848, 849, 850, 851, 852, 853, 854, 855, 856, 857, 858, 859, 860, 861, 862, 863, 864, 865, 866, 867, 868, 869, 870, 871, 872, 873, 874, 875, 876, 877, 878, 879, 880, 881, 882, 883, 884, 885, 886, 887, 888, 889, 890, 891, 892, 893, 894, 895, 896, 897, 898, 899, 900, 901, 902, 903, 904, 905, 906, 907, 908, 909, 910, 911, 912, 913, 914, 915, 916, 917, 918, 919, 920, 921, 922, 923, 924, 925, 926, 927, 928, 929, 930, 931, 932, 933, 934, 935, 936, 937, 938, 939, 940, 941, 942, 943, 944, 945, 946, 947, 948, 949, 950, 951, 952, 953, 954, 955, 956, 957, 958, 959, 960, 961, 962, 963, 964, 965, 966, 967, 968, 969, 970, 971, 972, 973, 974, 975, 976, 977, 978, 979, 980, 981, 982, 983, 984, 985, 986, 987, 988, 989, 990, 991, 992, 993, 994, 995, 996, 997, 998, 999, 1000, 1001, 1002, 1003, 1004, 1005, 1006, 1007, 1008, 1009, 1010, 1011, 1012, 1013, 1014, 1015, 1016, 1017, 1018, 1019, 1020, 1021, 1022, 1023, 1024, 1025, 1026, 1027, 1028, 1029, 1030, 1031, 1032, 1033, 1034, 1035, 1036, 1037, 1038, 1039, 1040, 1041, 1042, 1043, 1044, 1045, 1046, 1047, 1048, 1049, 1050, 1051, 1052, 1053, 1054, 1055, 1056, 1057, 1058, 1059, 1060, 1061, 1062, 1063, 1064, 1065, 1066, 1067, 1068, 1069, 1070, 1071, 1072, 1073, 1074, 1075, 1076, 1077, 1078, 1079, 1080, 1081, 1082, 1083, 1084, 1085, 1086, 1087, 1088, 1089, 1090, 1091, 1092, 1093, 1094, 1095, 1096, 1097, 1098, 1099, 1100, 1101, 1102, 1103, 1104, 1105, 1106, 1107, 1108, 1109, 1110, 1111, 1112, 1113, 1114, 1115, 1116, 1117, 1118, 1119, 1120, 1121, 1122, 1123, 1124, 1125, 1126, 1127, 1128, 1129, 1130, 1131, 1132, 1133, 1134, 1135, 1136, 1137, 1138, 1139, 1140, 1141, 1142, 1143, 1144, 1145, 1146, 1147, 1148, 1149, 1150, 1151, 1152, 1153, 1154, 1155, 1156, 1157, 1158, 1159, 1160, 1161, 1162, 1163, 1164, 1165, 1166, 1167, 1168, 1169, 1170, 1171, 1172, 1173, 1174, 1175, 1176, 1177, 1178, 1179, 1180, 1181, 1182, 1183, 1184, 1185, 1186, 1187, 1188, 1189, 1190, 1191, 1192, 1193, 1194, 1195, 1196, 1197, 1198, 1199, 1200, 1201, 1202, 1203, 1204, 1205, 1206, 1207, 1208, 1209, 1210, 1211, 1212, 1213, 1214, 1215, 1216, 1217, 1218, 1219, 1220, 1221, 1222, 1223, 1224, 1225, 1226, 1227, 1228, 1229, 1230, 1231, 1232, 1233, 1234, 1235, 1236, 1237, 1238, 1239, 1240, 1241, 1242, 1243, 1244, 1245, 1246, 1247, 1248, 1249, 1250, 1251, 1252, 1253, 1254, 1255, 1256, 1257, 1258, 1259, 1260, 1261, 1262, 1263, 1264, 1265, 1266, 1267, 1268, 1269, 1270, 1271, 1272, 1273, 1274, 1275, 1276, 1277, 1278, 1279, 1280, 1281, 1282, 1283, 1284, 1285, 1286, 1287, 1288, 1289, 1290, 1291, 1292, 1293, 1294, 1295, 1296, 1297, 1298, 1299, 1300, 1301, 1302, 1303, 1304, 1305, 1306, 1307, 1308, 1309, 1310, 1311, 1312, 1313, 1314, 1315, 1316, 1317, 1318, 1319, 1320, 1321, 1322, 1323, 1324, 1325, 1326, 1327, 1328, 1329, 1330, 1331, 1332, 1333, 1334, 1335, 1336, 1337, 1338, 1339, 1340, 1341, 1342, 1343, 1344, 1345, 1346, 1347, 1348, 1349, 1350, 1351, 1352, 1353, 1354, 1355, 1356, 1357, 1358, 1359, 1360, 1361, 1362, 1363, 1364, 1365, 1366, 1367, 1368, 1369, 1370, 1371, 1372, 1373, 1374, 1375, 1376, 1377, 1378, 1379, 1380, 1381, 1382, 1383, 1384, 1385, 1386, 1387, 1388, 1389, 1390, 1391, 1392, 1393, 1394, 1395, 1396, 1397, 1398, 1399, 1400, 1401, 1402, 1403, 1404, 1405, 1406, 1407, 1408, 1409, 1410, 1411, 1412, 1413, 1414, 1415, 1416, 1417, 1418, 1419, 1420, 1421, 1422, 1423, 1424, 1425, 1426, 1427, 1428, 1429, 1430, 1431, 1432, 1433, 1434, 1435, 1436, 1437, 1438, 1439, 1440, 1441, 1442, 1443, 1444, 1445, 1446, 1447, 1448, 1449, 1450, 1451, 1452, 1453, 1454, 1455, 1456, 1457, 1458, 1459, 1460, 1461, 1462, 1463, 1464, 1465, 1466, 1467, 1468, 1469, 1470, 1471, 1472, 1473, 1474, 1475, 1476, 1477, 1478, 1479, 1480, 1481, 1482, 1483, 1484, 1485, 1486, 1487, 1488, 1489, 1490, 1491, 1492, 1493, 1494, 1495, 1496, 1497, 1498, 1499, 1500, 1501, 1502, 1503, 1504, 1505, 1506, 1507, 1508, 1509, 1510, 1511, 1512, 1513, 1514, 1515, 1516, 1517, 1518, 1519, 1520, 1521, 1522, 1523, 1524, 1525, 1526, 1527, 1528, 1529, 1530, 1531, 1532, 1533, 1534, 1535, 1536, 1537, 1538, 1539, 1540, 1541, 1542, 1543, 1544, 1545, 1546, 1547, 1548, 1549, 1550, 1551, 1552, 1553, 1554, 1555, 1556, 1557, 1558, 1559, 1560, 1561, 1562, 1563, 1564, 1565, 1566, 1567, 1568, 1569, 1570, 1571, 1572, 1573, 1574, 1575, 1576, 1577, 1578, 1579, 1580, 1581, 1582, 1583, 1584, 1585, 1586, 1587, 1588, 1589, 1590, 1591, 1592, 1593, 1594, 1595, 1596, 1597, 1598, 1599, 1600, 1601, 1602, 1603, 1604, 1605, 1606, 1607, 1608, 1609, 1610, 1611, 1612, 1613, 1614, 1615, 1616, 1617, 1618, 1619, 1620, 1621, 1622, 1623, 1624, 1625, 1626, 1627, 1628, 1629, 1630, 1631, 1632, 1633, 1634, 1635, 1636, 1637, 1638, 1639, 1640, 1641, 1642, 1643, 1644, 1645, 1646, 1647, 1648, 1649, 1650, 1651, 1652, 1653, 1654, 1655, 1656, 1657, 1658, 1659, 1660, 1661, 1662, 1663, 1664, 1665, 1666, 1667, 1668, 1669, 1670, 1671, 1672, 1673, 1674, 1675, 1676, 1677, 1678, 1679, 1680, 1681, 1682, 1683, 1684, 1685, 1686, 1687, 1688, 1689, 1690, 1691, 1692, 1693, 1694, 1695, 1696, 1697, 1698, 1699, 1700, 1701, 1702, 1703, 1704, 1705, 1706, 1707, 1708, 1709, 1710, 1711, 1712, 1713, 1714, 1715, 1716, 1717, 1718, 1719, 1720, 1721, 1722, 1723, 1724, 1725, 1726, 1727, 1728, 1729, 1730, 1731, 1732, 1733, 1734, 1735, 1736, 1737, 1738, 1739, 1740, 1741, 1742, 1743, 1744, 1745, 1746, 1747, 1748, 1749, 1750, 1751, 1752, 1753, 1754, 1755, 1756, 1757, 1758, 1759, 1760, 1761, 1762, 1763, 1764, 1765, 1766, 1767, 1768, 1769, 1770, 1771, 1772, 1773, 1774, 1775, 1776, 1777, 1778, 1779, 1780, 1781, 1782, 1783, 1784, 1785, 1786, 1787, 1788, 1789, 1790, 1791, 1792, 1793, 1794, 1795, 1796, 1797, 1798, 1799, 1800, 1801, 1802, 1803, 1804, 1805, 1806, 1807, 1808, 1809, 1810, 1811, 1812, 1813, 1814, 1815, 1816, 1817, 1818, 1819, 1820, 1821, 1822, 1823, 1824, 1825, 1826, 1827, 1828, 1829, 1830, 1831, 1832, 1833, 1834, 1835, 1836, 1837, 1838, 1839, 1840, 1841, 1842, 1843, 1844, 1845, 1846, 1847, 1848, 1849, 1850, 1851, 1852, 1853, 1854, 1855, 1856, 1857, 1858, 1859, 1860, 1861, 1862, 1863, 1864, 1865, 1866, 1867, 1868, 1869, 1870, 1871, 1872, 1873, 1874, 1875, 1876, 1877, 1878, 1879, 1880, 1881, 1882, 1883, 1884, 1885, 1886, 1887, 1888, 1889, 1890, 1891, 1892, 1893, 1894, 1895, 1896, 1897, 1898, 1899, 1900, 1901, 1902, 1903, 1904, 1905, 1906, 1907, 1908, 1909, 1910, 1911, 1912, 1913, 1914, 1915, 1916, 1917, 1918, 1919, 1920, 1921, 1922, 1923, 1924, 1925, 1926, 1927, 1928, 1929, 1930, 1931, 1932, 1933, 1934, 1935, 1936, 1937, 1938, 1939, 1940, 1941, 1942, 1943, 1944, 1945, 1946, 1947, 1948, 1949, 1950, 1951, 1952, 1953, 1954, 1955, 1956, 1957, 1958, 1959, 1960, 1961, 1962, 1963, 1964, 1965, 1966, 1967, 1968, 1969, 1970, 1971, 1972, 1973, 1974, 1975, 1976, 1977, 1978, 1979, 1980, 1981, 1982, 1983, 1984, 1985, 1986, 1987, 1988, 1989, 1990, 1991, 1992, 1993, 1994, 1995, 1996, 1997, 1998, 1999, 2000, 2001, 2002, 2003, 2004, 2005, 2006, 2007, 2008, 2009, 2010, 2011, 2012, 2013, 2014, 2015, 2016, 2017, 2018, 2019, 2020, 2021, 2022, 2023, 2024, 2025, 2026, 2027, 2028, 2029, 2030, 2031, 2032, 2033, 2034, 2035, 2036, 2037, 2038, 2039, 2040, 2041, 2042, 2043, 2044, 2045, 2046, 2047, 2048, 2049, 2050, 2051, 2052, 2053, 2054, 2055, 2056, 2057, 2058, 2059, 2060, 2061, 2062, 2063, 2064, 2065, 2066, 2067, 2068, 2069, 2070, 2071, 2072, 2073, 2074, 2075, 2076, 2077, 2078, 2079, 2080, 2081, 2082, 2083, 2084, 2085, 2086, 2087, 2088, 2089, 2090, 2091, 2092, 2093, 2094, 2095, 2096, 2097, 2098, 2099, 2100, 2101, 2102, 2103, 2104, 2105, 2106, 2107, 2108, 2109, 2110, 2111, 2112, 2113, 2114, 2115, 2116, 2117, 2118, 2119, 2120, 2121, 2122, 2123, 2124, 2125, 2126, 2127, 2128, 2129, 2130, 2131, 2132, 2133, 2134, 2135, 2136, 2137, 2138, 2139, 2140, 2141, 2142, 2143, 2144, 2145, 2146, 2147, 2148, 2149, 2150, 2151, 2152, 2153, 2154, 2155, 2156, 2157, 2158, 2159, 2160, 2161, 2162, 2163, 2164, 2165, 2166, 2167, 2168, 2169, 2170, 2171, 2172, 2173, 2174, 2175, 2176, 2177, 21



NOTE
LOT 4 OF BLOCK 26 IS UNASSIGNED

BLOCK 26, LOTS 15, 16 ARE UNASSIGNED

SEE SHEET 13

SEE SHEET 17

SEE SHEET 11

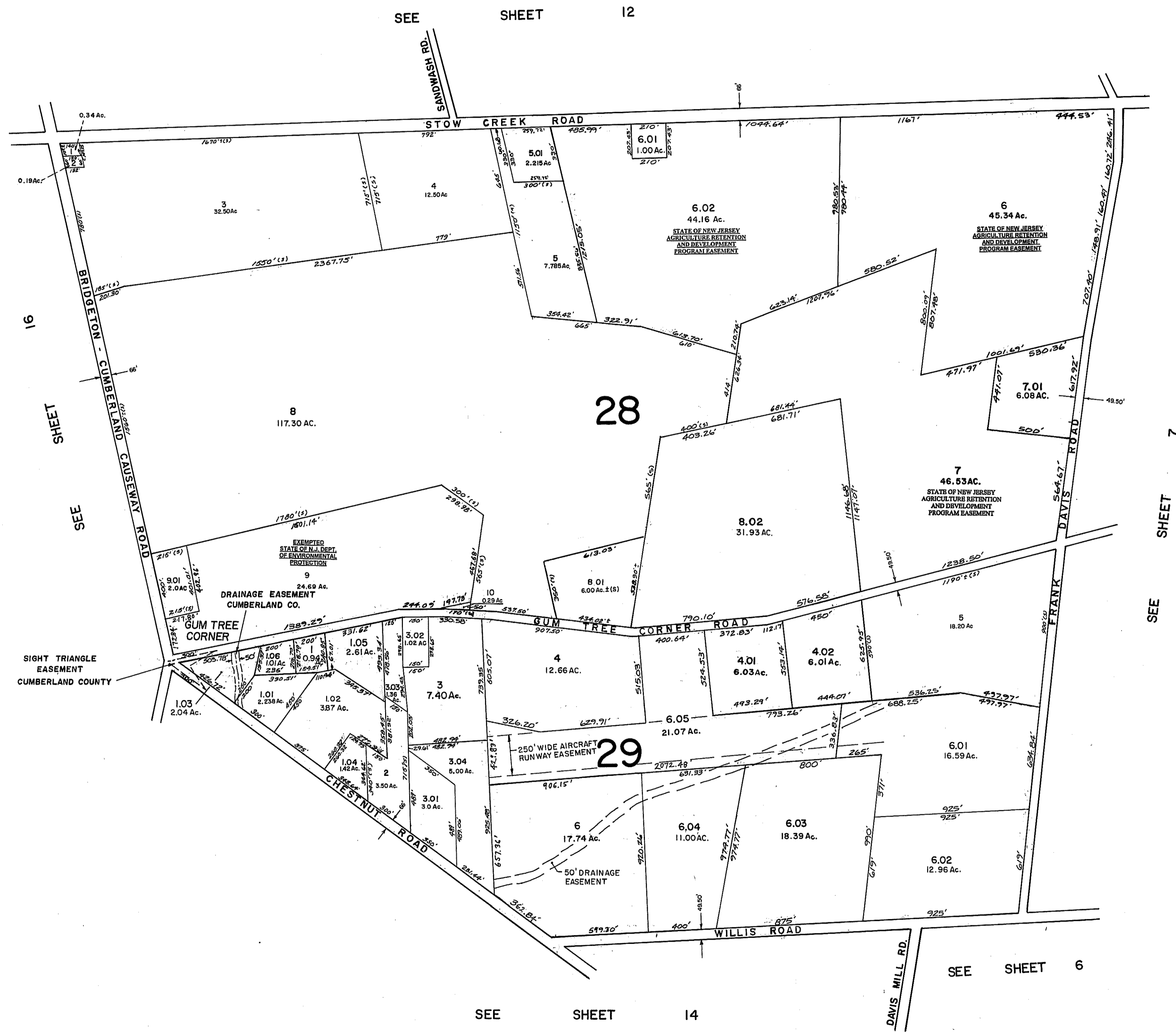
STATE OF NEW JERSEY
AGRICULTURE RETENTION
AND DEVELOPMENT
PROGRAM EASEMENT

NEW JERSEY DEPARTMENT OF THE TREASURY
DIVISION OF TAXATION
PUBLIC UTILITY TAX BUREAU

APPROVED AS A TAX MAP PURSUANT TO THE
PROVISIONS OF CHAPTER 175, LAWS OF 1913, ETC.
FOR THE COMMISSIONER OF TAXATION

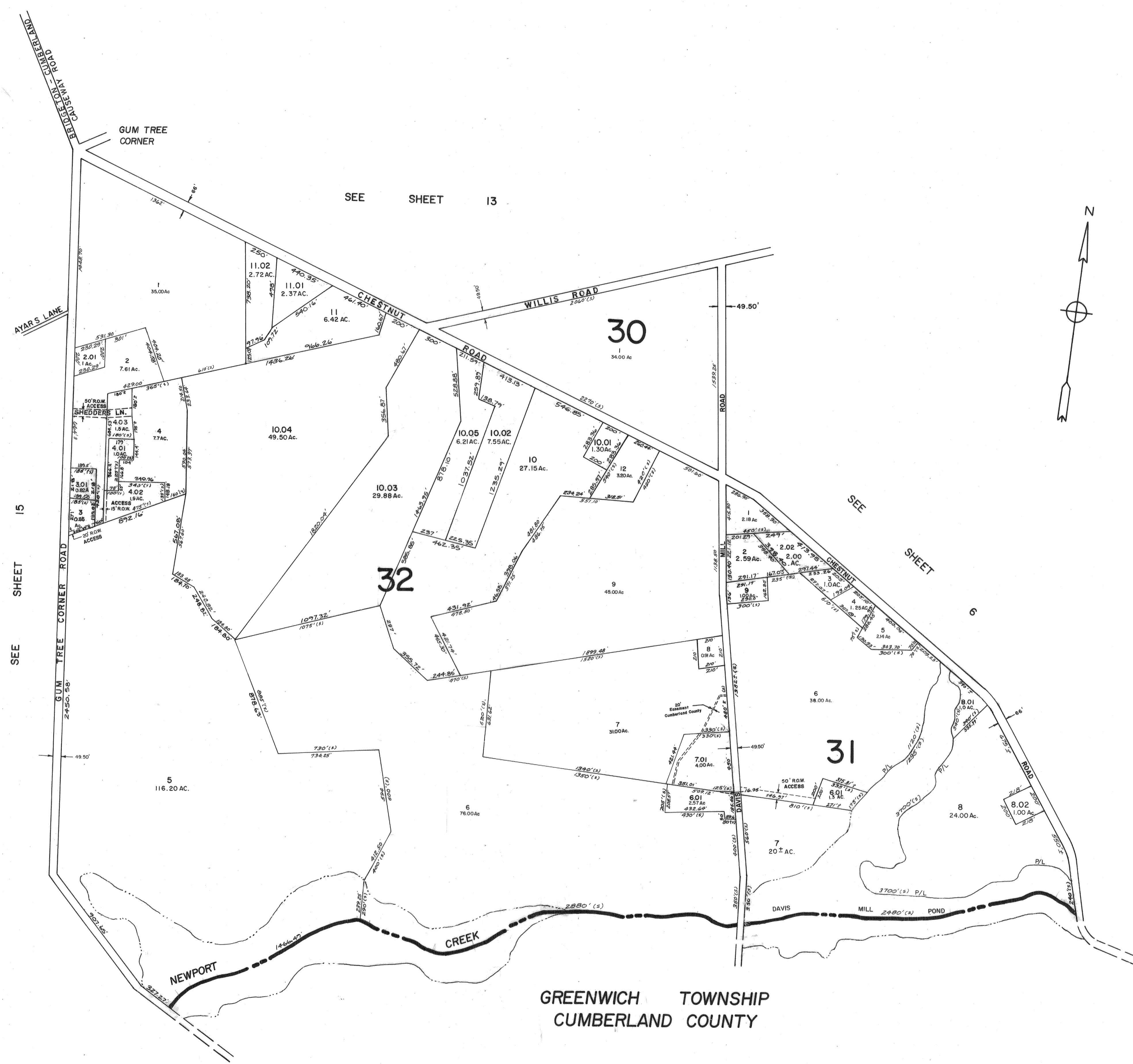
Albert A. Fralinger, Jr.
DATE: MAR 30 1970 SERIAL NO. 433

TAX ASSESSMENT MAP
STOW CREEK TOWNSHIP
CUMBERLAND COUNTY N.J.
SCALE 1" = 400' FEBRUARY, 1970
ALBERT A. FRALINGER JR., CONSULTING ENGINEER
629 SHILOH PIKE, BRIDGETON, N. J. 08302



NEW JERSEY DEPARTMENT OF THE TREASURY
 DIVISION OF TAXATION
 PUBLIC UTILITY TAX BUREAU
 APPROVED AS A TAX MAP PURSUANT TO THE
 PROVISIONS OF CHAPTER 175, LAWS OF 1913, ETC.
 FOR THE DIVISION OF TAXATION
 BY *[Signature]* STATE SUPERVISOR
 DATE MAR 30 1970 SERIAL NO. 483

TAX ASSESSMENT MAP
 STOW CREEK TOWNSHIP
 CUMBERLAND COUNTY N.J.
 SCALE 1" = 400' FEBRUARY, 1970
 ALBERT A. FRALINGER JR, CONSULTING ENGINEER
 629 SHILOH PIKE, BRIDGETON, N. J. 08302



SEE SHEET 13

SEE SHEET 6

SEE SHEET 15

GREENWICH TOWNSHIP
CUMBERLAND COUNTY

NEW JERSEY DEPARTMENT OF THE TREASURY
DIVISION OF TAXATION
PUBLIC UTILITY TAX BUREAU

APPROVED AS A TAX MAP PURSUANT TO THE PROVISIONS OF CHAPTER 175, LAWS OF 1913, ETC. FOR THE DIVISION OF TAXATION

Albert A. Fralinger, Jr.
STATE SUPERVISOR

DATE MAR 30 1970 SERIAL NO. 483

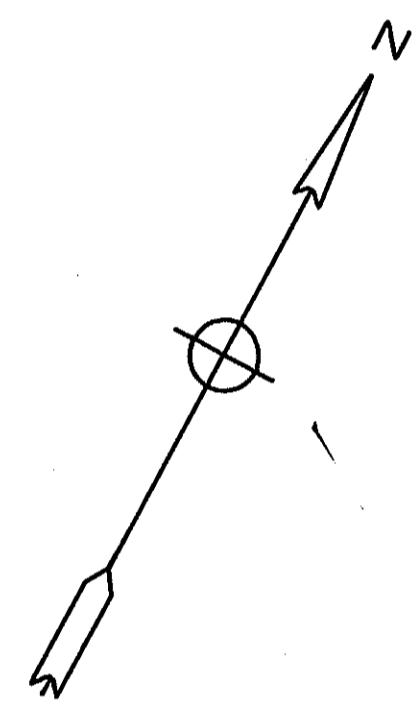
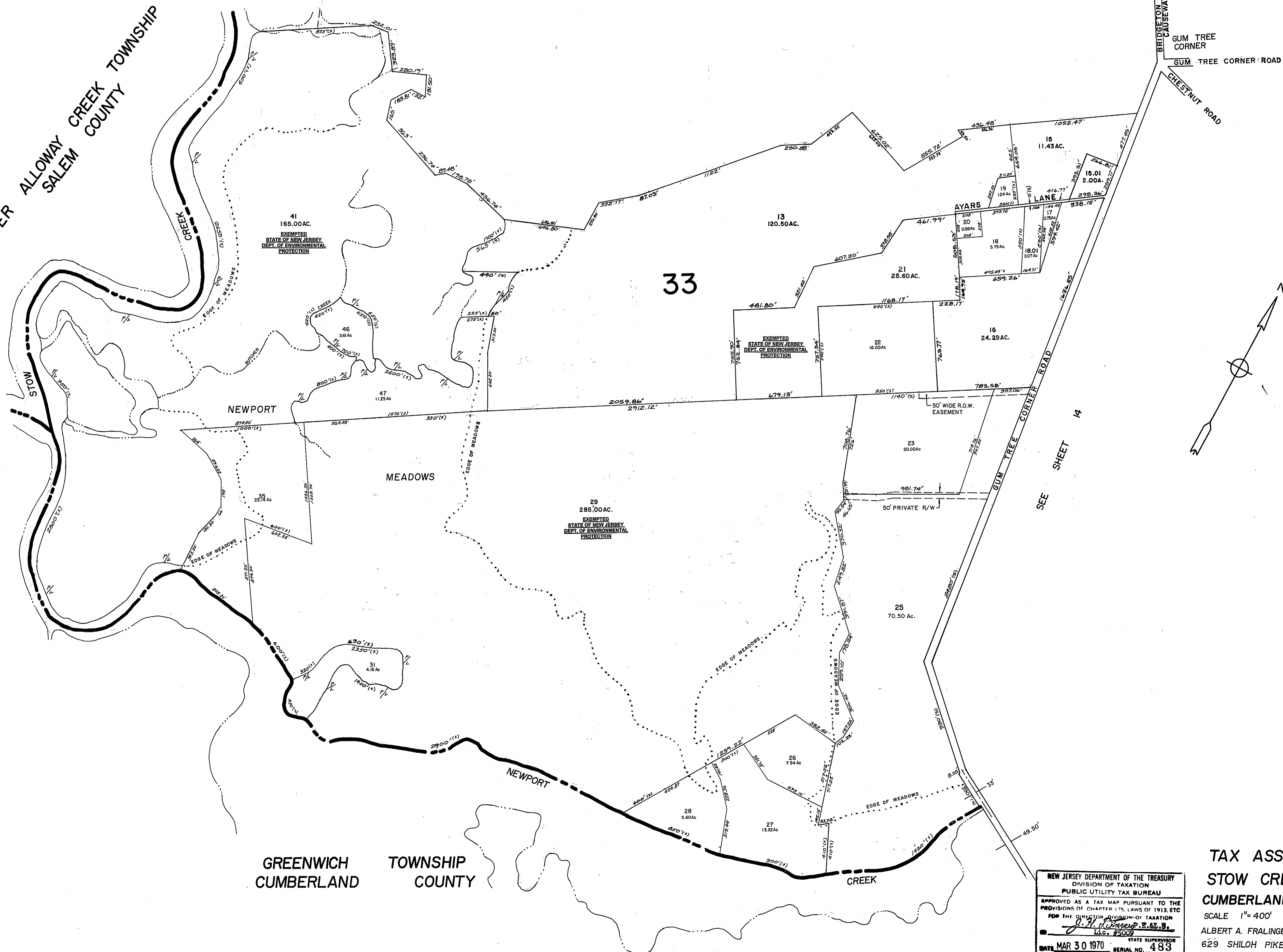
TAX ASSESSMENT MAP
STOW CREEK TOWNSHIP
CUMBERLAND COUNTY N.J.

SCALE 1"= 400' FEBRUARY, 1970

ALBERT A. FRALINGER JR., CONSULTING ENGINEER
629 SHILOH PIKE, BRIDGETON, N. J. 08302

SEE SHEET 16

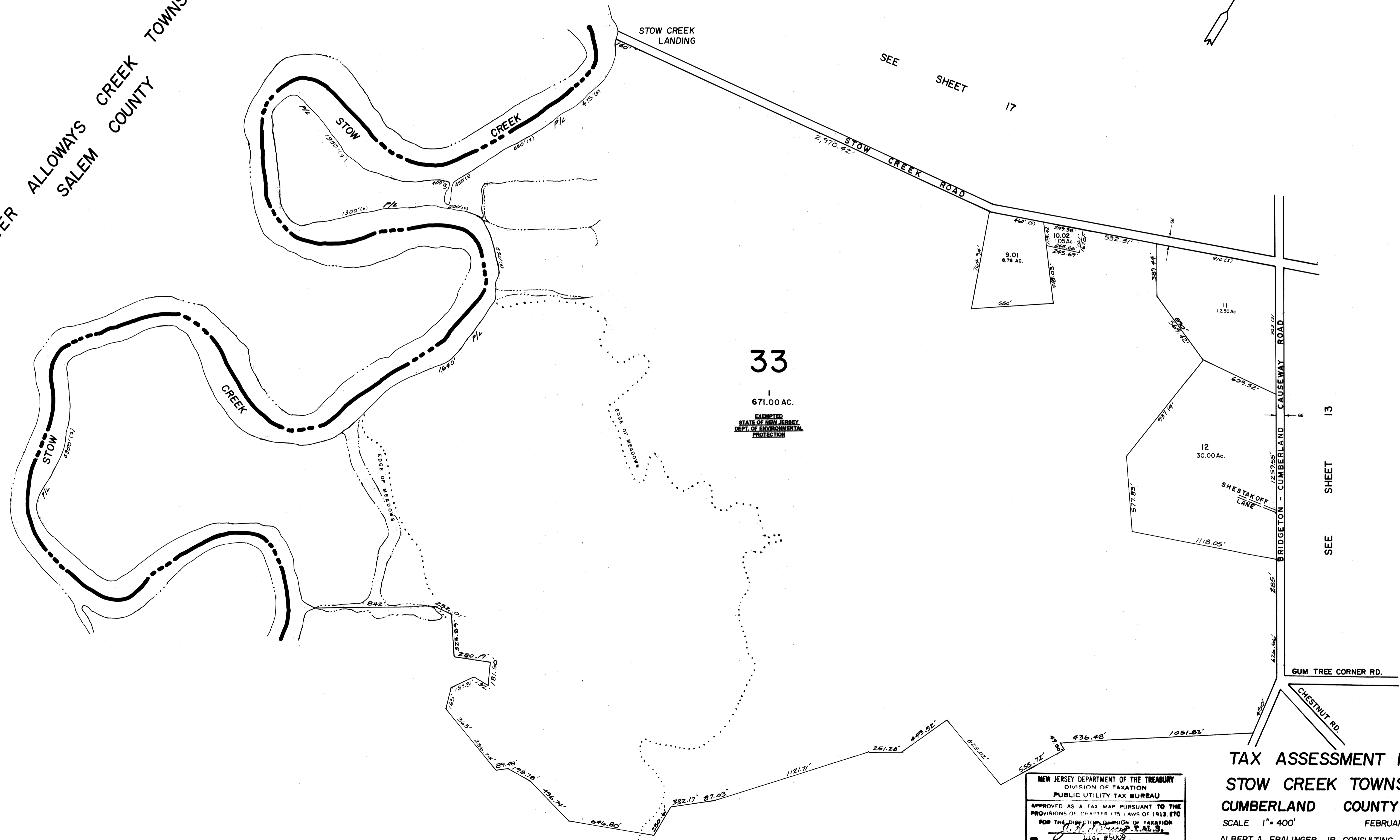
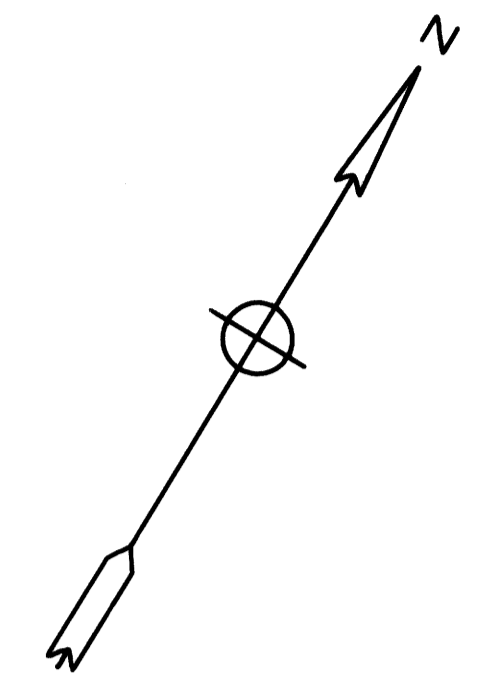
LOWER ALLOWAY CREEK TOWNSHIP
SALEM COUNTY



NEW JERSEY DEPARTMENT OF THE TREASURY
DIVISION OF TAXATION
PUBLIC UTILITY TAX BUREAU
APPROVED AS A TAX MAP PURSUANT TO THE
PROVISIONS OF CHAPTER 175, LAWS OF 1913, ETC.
FOR THE DIRECTOR DIVISION OF TAXATION
Albert A. Fralinger, Jr.
L.L.C. #25099
DATE MAR 30 1970 STATE SUPERVISOR SERIAL NO. 483

TAX ASSESSMENT MAP
STOW CREEK TOWNSHIP
CUMBERLAND COUNTY N.J.
SCALE 1" = 400' FEBRUARY, 1970
ALBERT A. FRALINGER JR., CONSULTING ENGINEER
629 SHILOH PIKE, BRIDGETON, N. J. 08302

LOWER ALLOWAYS CREEK TOWNSHIP
SALEM COUNTY



LOTS 4, 5, 7, 8, 9
ARE UNASSIGNED

SEE SHEET 15

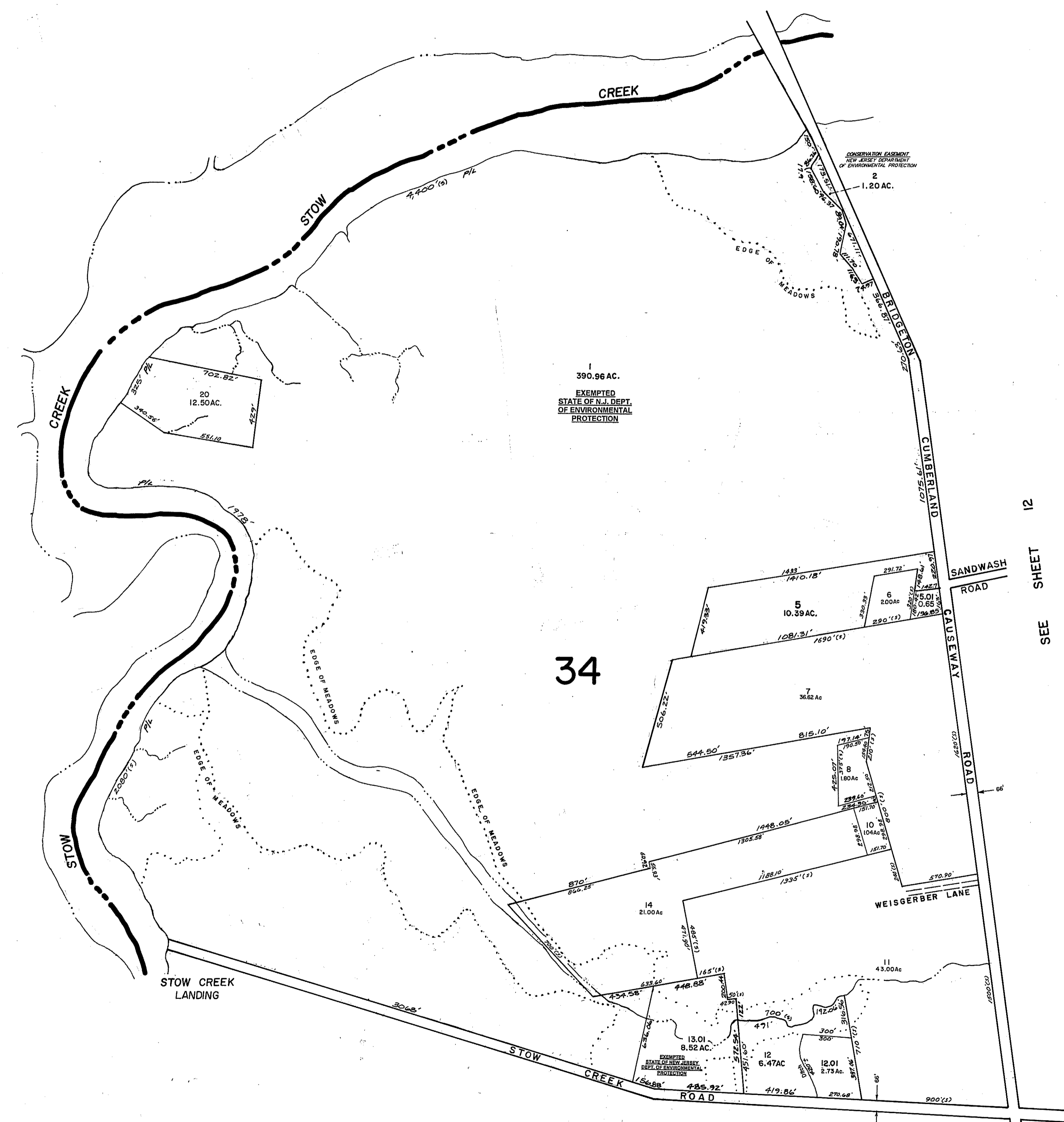
SEE SHEET 17

SEE SHEET 13

NEW JERSEY DEPARTMENT OF THE TREASURY
DIVISION OF TAXATION
PUBLIC UTILITY TAX BUREAU
APPROVED AS A TAX MAP PURSUANT TO THE
PROVISIONS OF CHAPTER 175, LAWS OF 1913, ETC.
FOR THE DIVISION OF TAXATION
DATE MAR 30 1970 SERIAL NO. 483

TAX ASSESSMENT MAP
STOW CREEK TOWNSHIP
CUMBERLAND COUNTY N.J.
SCALE 1" = 400'
FEBRUARY, 1970
ALBERT A. FRALINGER JR., CONSULTING ENGINEER
629 SHILOH PIKE, BRIDGETON, N. J. 08302

LOWER ALLOWAYS CREEK TOWNSHIP
SALEM COUNTY



34

SEE SHEET 16

SEE SHEET 12

NEW JERSEY DEPARTMENT OF THE TREASURY
DIVISION OF TAXATION
PUBLIC UTILITY TAX BUREAU
APPROVED AS A TAX MAP PURSUANT TO THE
PROVISIONS OF CHAPTER 175, LAWS OF 1913, ETC.
FOR THE DISTRICT COMMISSIONER OF TAXATION
[Signature]
DATE MAR 30 1970 STATE SUPERVISOR SERIAL NO. 483

TAX ASSESSMENT MAP
STOW CREEK TOWNSHIP
CUMBERLAND COUNTY N.J.
SCALE 1"= 400' FEBRUARY, 1970
ALBERT A. FRALINGER JR., CONSULTING ENGINEER
629 SHILOH PIKE, BRIDGETON, N.J. 08302